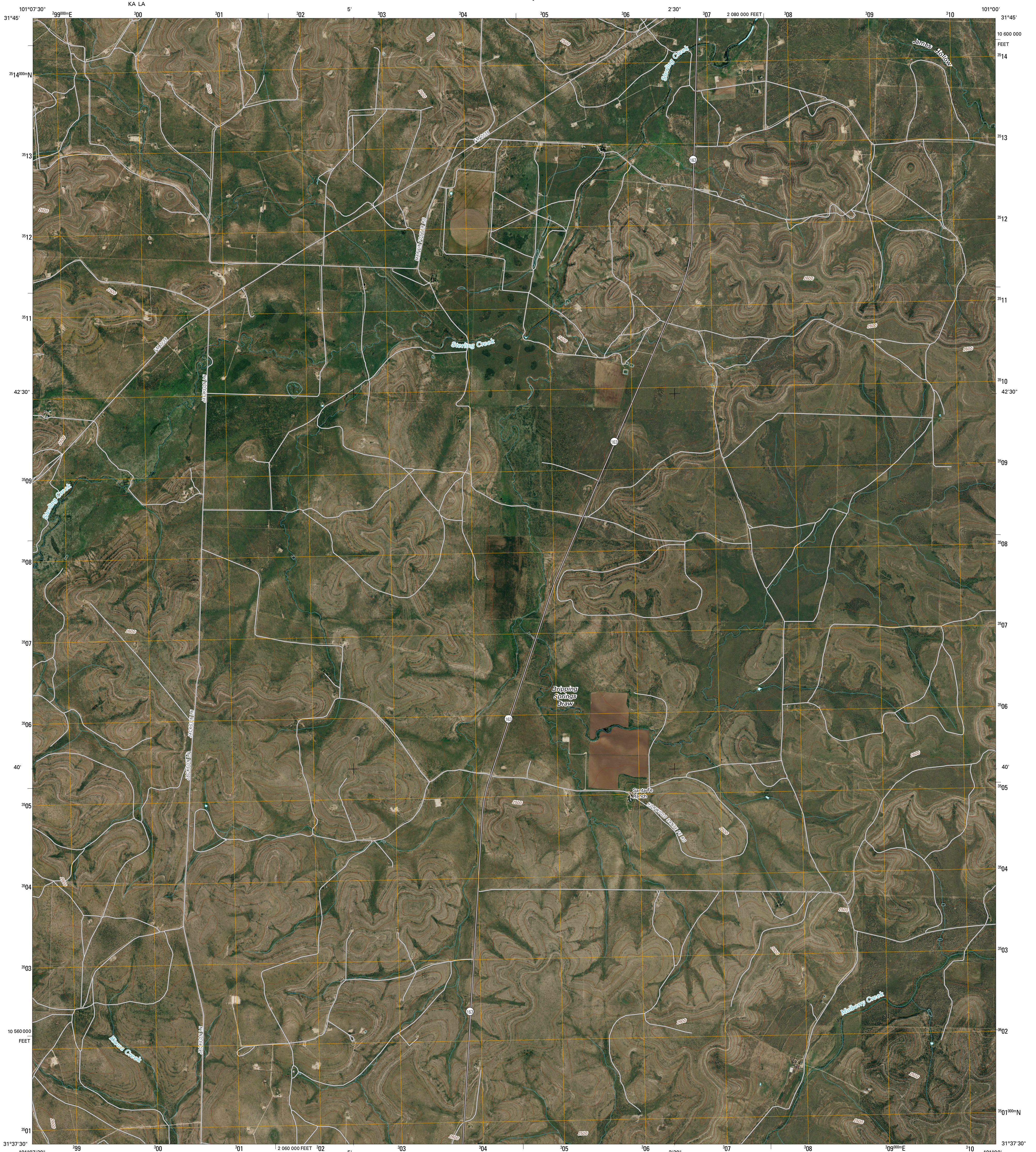




U.S. DEPARTMENT OF THE INTERIOR  
U. S. GEOLOGICAL SURVEY

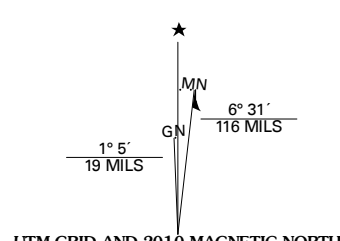


DRIPPING SPRINGS DRAW QUADRANGLE  
TEXAS  
7.5-MINUTE SERIES

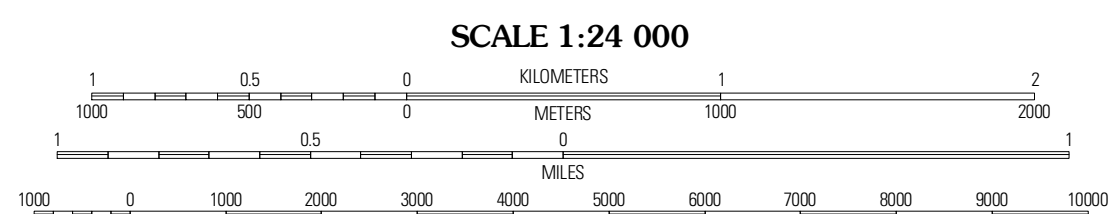


Produced by the United States Geological Survey  
North American Datum of 1983 (NAD83)  
World Geodetic System of 1984 (WGS84). Projection and  
1 000-meter grid: Universal Transverse Mercator, Zone 14R  
10 000-foot ticks: Texas Coordinate System of 1983  
(central zone)

Imagery.....NAIP, September 2008  
Roads.....US Census Bureau TIGER data  
with limited USGS updates, 2008  
Names.....GNIS, 2008  
Hydrography.....National Hydrography Dataset, 1995  
Contours.....National Elevation Dataset, 2007



|                       |                       |
|-----------------------|-----------------------|
| U.S. National Grid    | 300,000.00m Square ID |
| 14R                   | KA LA                 |
| Grid Zone Designation | 14R                   |



SCALE 1:24 000

CONTOUR INTERVAL 20 FEET

This map was produced to conform with version 0.5.10 of the  
draft USGS Standards for 7.5-Minute Quadrangle Maps.  
A metadata file associated with this product is also draft version 0.5.10



| QUADRANGLE LOCATION |                       |              |
|---------------------|-----------------------|--------------|
| Class               | Cambie                | Sterling     |
| Ranch               | Draw                  | City         |
| Coon Draw NW        | Dripping Springs Draw | Dog Creek NW |
| Hay Hollow          | Coon Draw             | Dog Creek SW |

ADJOINING 7.5 QUADRANGLES  
TX 31101-414

| ROAD CLASSIFICATION |             |
|---------------------|-------------|
| Interstate Route    | State Route |
| US Route            | Local Road  |
| Ramp                | 4WD         |

DRIPPING SPRINGS DRAW, TX  
2010