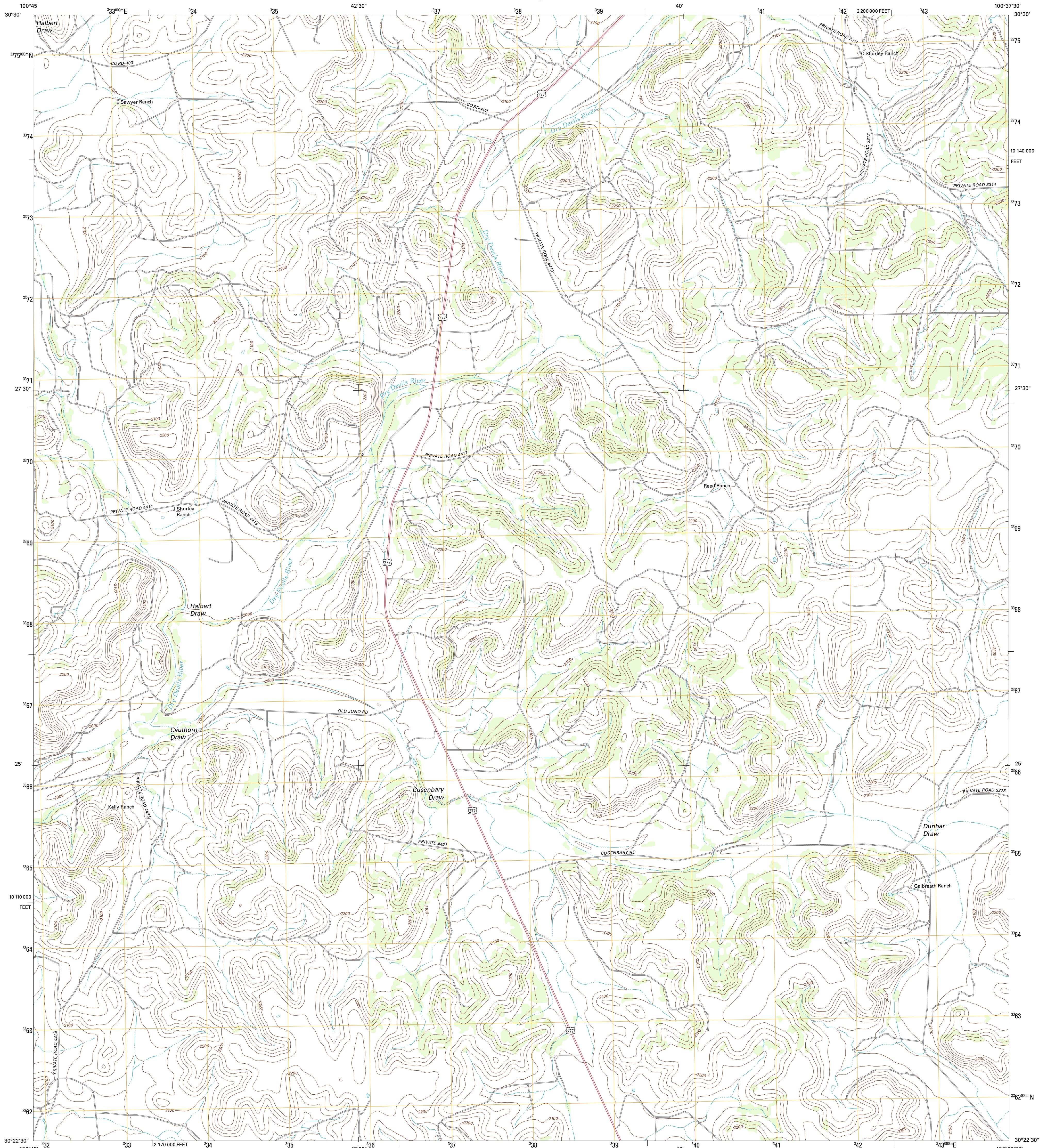




U.S. DEPARTMENT OF THE INTERIOR
U. S. GEOLOGICAL SURVEY

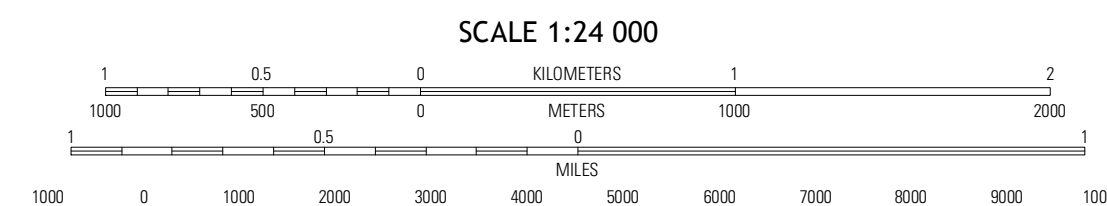
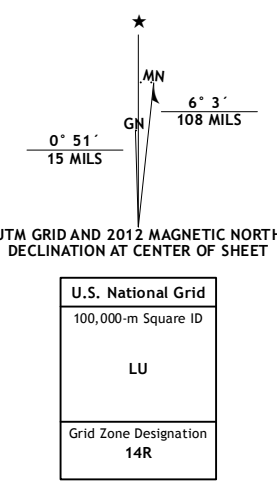


DUNBAR DRAW NW QUADRANGLE
TEXAS-SUTTON CO.
7.5-MINUTE SERIES



Produced by the United States Geological Survey
North American Datum of 1983 (NAD83)
World Geodetic System of 1984 (WGS84). Projection and
1 000-meter grid: Universal Transverse Mercator, Zone 14R
10 000-foot ticks: Texas Coordinate System of 1983 (central zone)

Imagery.....N.A.I.P., May 2010
Roads.....©2006-2012 TomTom
Names.....GNSS, 2012
Hydrography.....National Hydrography Dataset, 2010
Contours.....National Elevation Dataset, 2006
Boundaries.....Census, IBWC, IBC, USGS, 1972-2012



CONTOUR INTERVAL 20 FEET
NORTH AMERICAN VERTICAL DATUM OF 1988

This map was produced to conform with the
National Geospatial Program US Topo Product Standard, 2011.
A metadata file associated with this product is draft version 0.6.7



QUADRANGLE LOCATION

| | | |
|-------------------|----------------|----------------|
| Cavers of Sonora | Sonora | Sonora SE |
| Hudspeth Draw | Dunbar Draw NW | Dunbar Draw NE |
| Flat Rock Draw SE | Dunbar Draw SW | Dunbar Draw SE |

ROAD CLASSIFICATION

| | |
|------------------|-------------|
| Interstate Route | State Route |
| US Route | Local Road |
| Ramp | 4WD |

DUNBAR DRAW NW, TX
2012

ADJOINING 7.5 QUADRANGLES