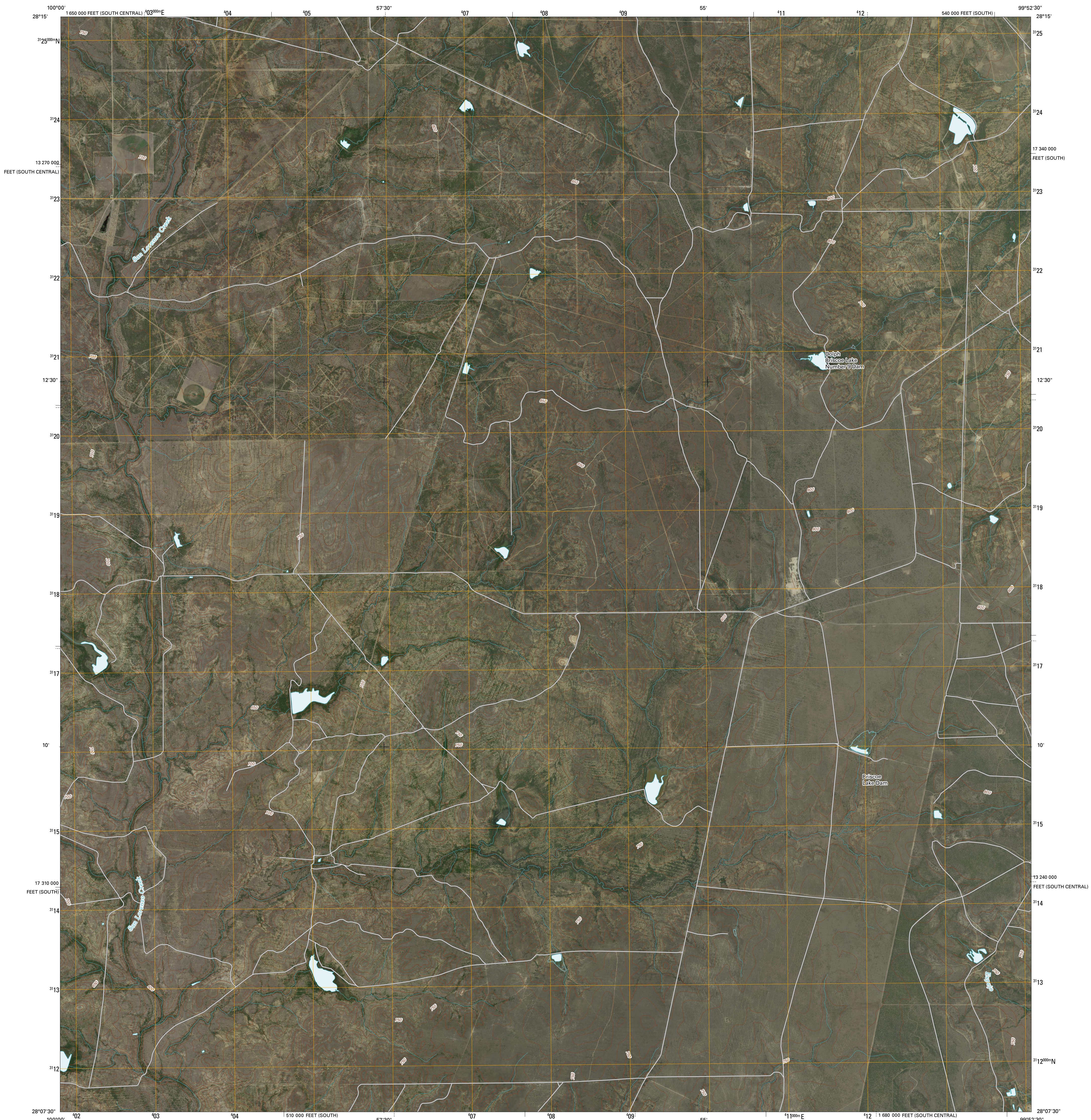




U.S. DEPARTMENT OF THE INTERIOR  
U. S. GEOLOGICAL SURVEY

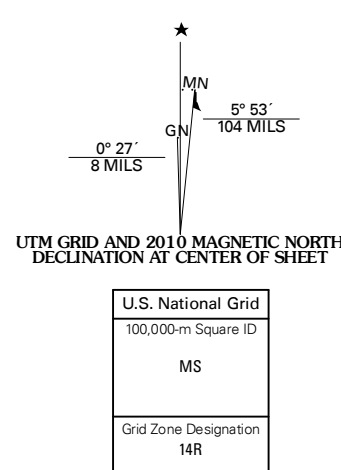


EAST LOSA TANK QUADRANGLE  
TEXAS  
7.5-MINUTE SERIES

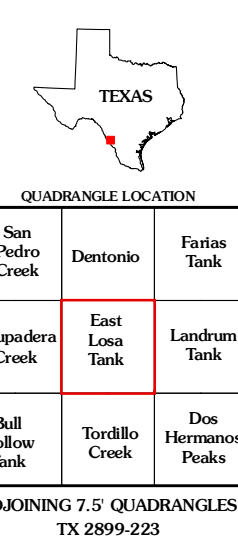


Produced by the United States Geological Survey  
North American Datum of 1983 (NAD83)  
World Geodetic System of 1984 (WGS84). Projection and  
1 000-meter grid: Universal Transverse Mercator, Zone 14R  
10 000-foot ticks: Texas Coordinate System of 1983  
(south and south central zones)

Imagery.....NAIP, April 2008  
Roads.....US Census Bureau TIGER data  
with limited USGS updates, 2006 - 2008  
Names.....GNIS, 2008  
Hydrography.....National Hydrography Dataset, 1995  
Contours.....National Elevation Dataset, 2004

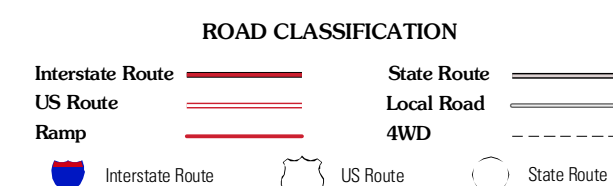


This map was produced to conform with version 0.5.10 of the  
draft USGS Standards for 7.5-Minute Quadrangle Maps.  
A metadata file associated with this product is also draft version 0.5.10



QUADRANGLE LOCATION		
San Pedro Creek	Denton	Fattis Tank
Chaparral Creek	East Losa Tank	Landrum Tank
Bull Hollow Tank	Torillo Creek	Dos Hermanos Peaks

ADJOINING 7.5 QUADRANGLES  
TX 2899-223



EAST LOSA TANK, TX  
2010