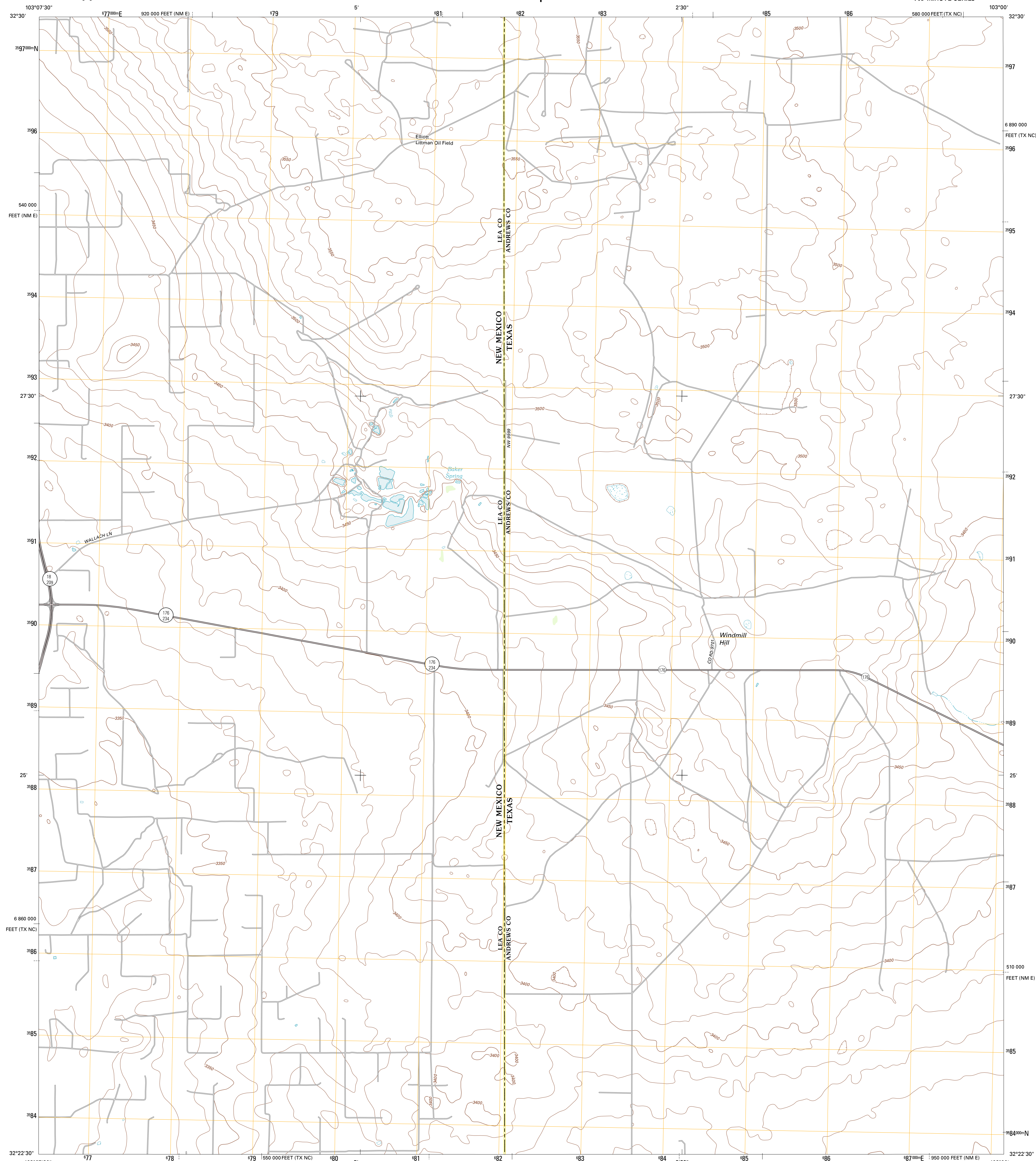




U.S. DEPARTMENT OF THE INTERIOR
U. S. GEOLOGICAL SURVEY

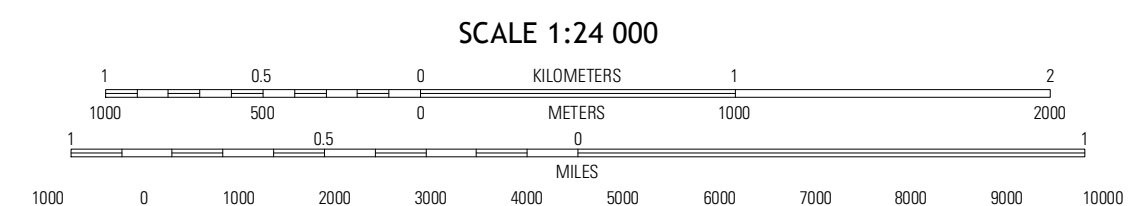
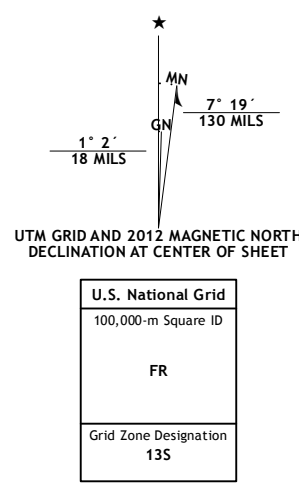


EUNICE NE QUADRANGLE
TEXAS-NEW MEXICO
7.5-MINUTE SERIES



Produced by the United States Geological Survey
North American Datum of 1983 (NAD83)
World Geodetic System of 1984 (WGS84). Projection and
1 000-meter grid: Universal Transverse Mercator, Zone 13S
10 000-foot ticks: Texas Coordinate System of 1983 (north
central zone), New Mexico Coordinate System of 1983 (east
zone)

Imagery.....NAIP, August 2010 - May 2011
Roads.....©2006-2012 TomTom
Names.....GNIS, 2012
Hydrography.....National Hydrography Dataset, 2010
Contours.....National Elevation Dataset, 2002
Boundaries.....Census, IBWC, B.C. USGS, 1972 - 2012
Public Land Survey System.....BLM, 2006 - 2008



CONTOUR INTERVAL 10 FEET
NORTH AMERICAN VERTICAL DATUM OF 1988

This map was produced to conform with the
National Geospatial Program US Topo Product Standard, 2011.
A metadata file associated with this product is draft version 0.6.7

ROAD CLASSIFICATION

- Interstate Route (thick red line)
- US Route (red line)
- Ramp (red line with blue arrow)
- State Route (thin red line)
- Local Road (grey line)
- 4WD (dashed grey line)

QUADRANGLE LOCATION

| | | |
|--------------------|------------------|-----------------|
| Hobbs SW | Hobbs SE | Beinson Ranch |
| Eunice | Eunice NE | Jumbo Hill |
| Rattlesnake Canyon | Eunice SE | Frankel City SW |

ADJOINING 7.5 QUADRANGLES

EUNICE NE, TX-NM
2012