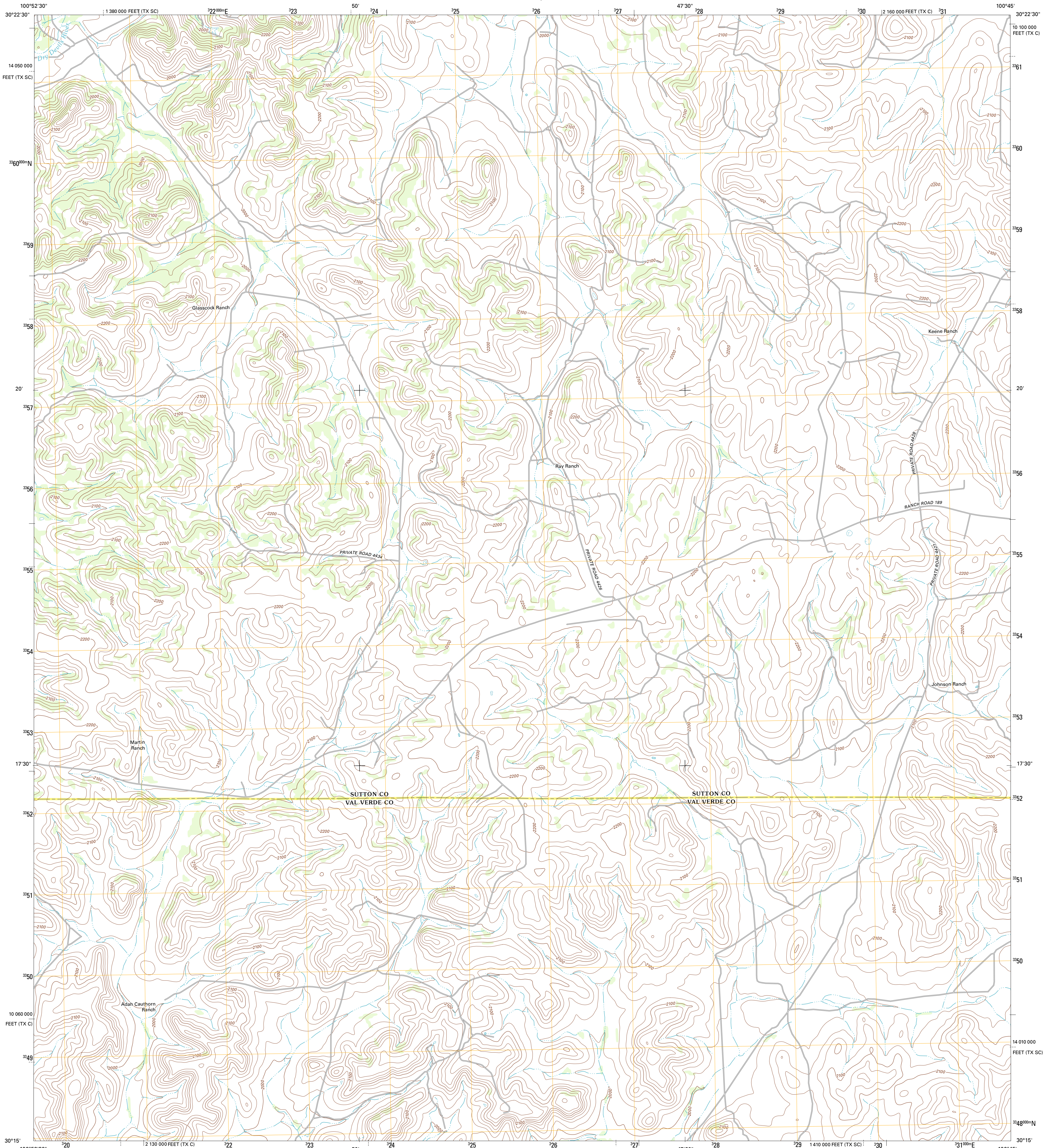




U.S. DEPARTMENT OF THE INTERIOR
U. S. GEOLOGICAL SURVEY

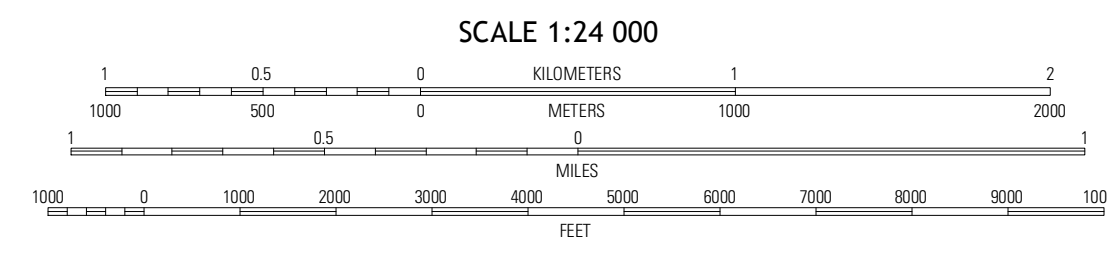
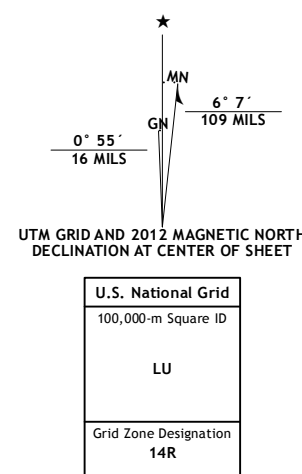


FLAT ROCK DRAW SE QUADRANGLE
TEXAS
7.5-MINUTE SERIES



Produced by the United States Geological Survey
North American Datum of 1983 (NAD83)
World Geodetic System of 1984 (WGS84). Projection and
1 000-meter grid: Universal Transverse Mercator, Zone 14R,
10 000-foot ticks: Texas Coordinate System of 1983 (central and
south central zones)

Imagery.....NAP, May 2010
Roads.....©2006-2012 TomTom
Names.....GNSS, 2012
Hydrography.....National Hydrography Dataset, 2010
Contours.....National Elevation Dataset, 2006
Boundaries.....Census, BWC, USGS, 1972 - 2012



SCALE 1:24 000
CONTOUR INTERVAL 20 FEET
NORTH AMERICAN VERTICAL DATUM OF 1988
This map was produced to conform with the
National Geospatial Program US Topo Product Standard, 2011.
A metadata file associated with this product is draft version 0.6.7



QUADRANGLE LOCATION

Shafter Draw	Hedgpeck Draw	Dunbar Draw NW
Flat Rock Draw SW	Flat Rock Draw SE	Dunbar Draw SW
White Draw NW	White Draw NE	Turney Draw NW

ROAD CLASSIFICATION

Interstate Route	State Route
US Route	Local Road
Ramp	4WD

FLAT ROCK DRAW SE, TX
2012

ADJOINING 7.5 QUADRANGLES