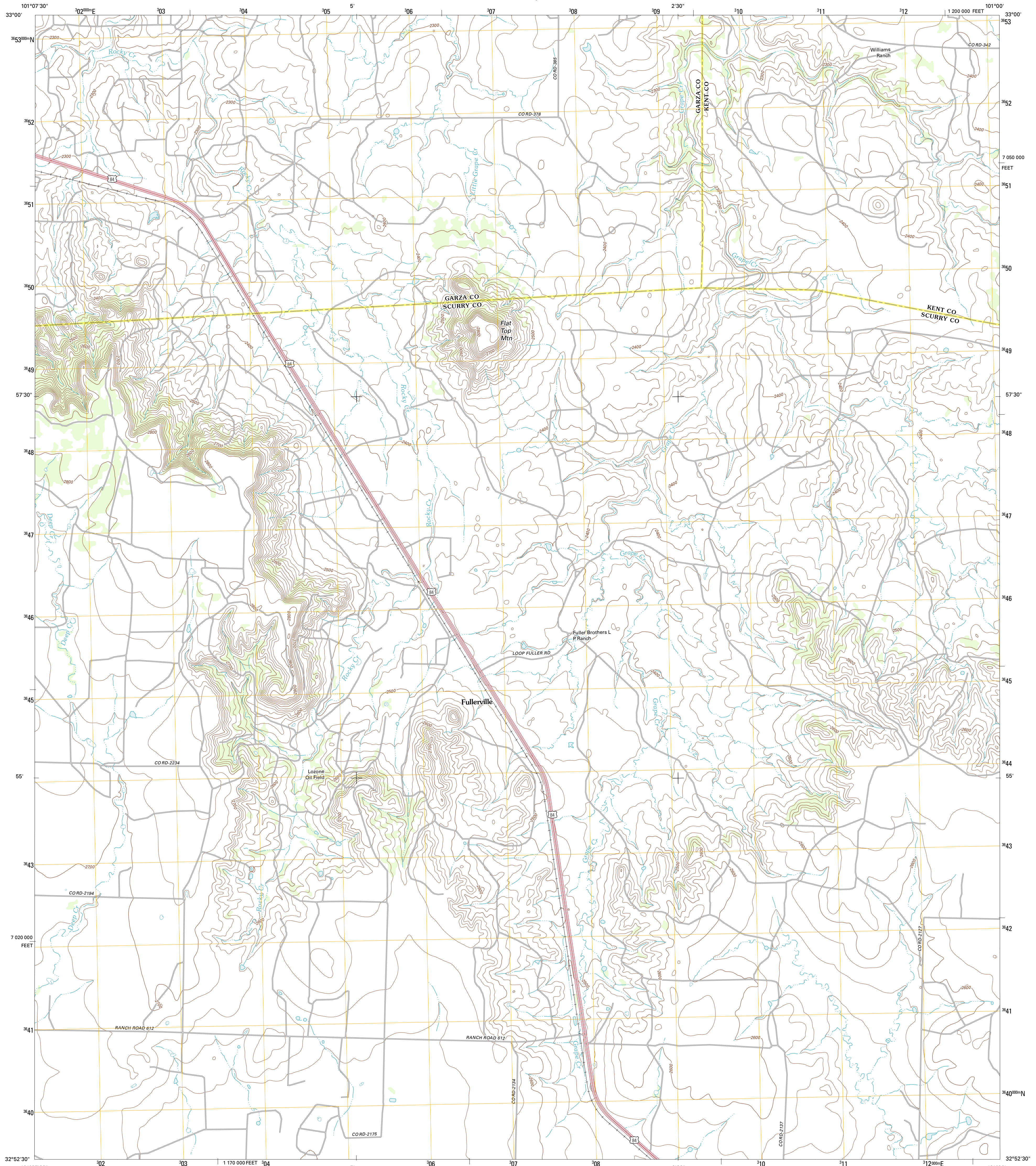




U.S. DEPARTMENT OF THE INTERIOR
U. S. GEOLOGICAL SURVEY

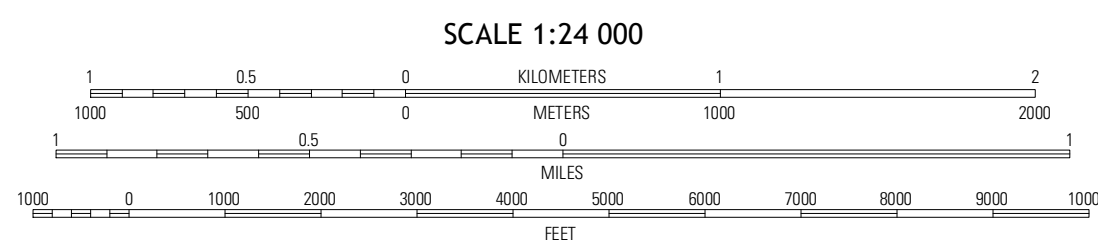
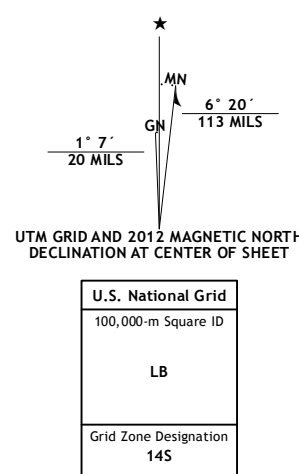


FLAT TOP MOUNTAIN QUADRANGLE
TEXAS
7.5-MINUTE SERIES



Produced by the United States Geological Survey
North American Datum of 1983 (NAD83)
World Geodetic System of 1984 (WGS84). Projection and
1 800-meter grid: Universal Transverse Mercator, Zone 14S
10 000-foot ticks: Texas Coordinate System of 1983 (north
central zone)

Imagery.....NAIP, August 2010
Roads.....©2006-2012 TomTom
Names.....GNIS, 2012
Hydrography.....National Hydrography Dataset, 2010
Contours.....National Elevation Dataset, 2007
Boundaries.....Census, IBWC, USGS, 1972 - 2012



SCALE 1:24 000
CONTOUR INTERVAL 20 FEET
NORTH AMERICAN VERTICAL DATUM OF 1988
This map was produced to conform with the
National Geospatial Program US Topo Product Standard, 2011.
A metadata file associated with this product is draft version 0.6.7



QUADRANGLE LOCATION

Justiceburg	Justiceburg SE	Polar
Fluvanna	Flat Top Mountain	McKenzie Mountains
Arah	Dermott	Brand

ADJOINING 7.5 QUADRANGLES

ROAD CLASSIFICATION
Interstate Route (red line)
US Route (yellow line)
Ramp (red line with blue)
State Route (grey line)
Local Road (grey line)
4WD (red line with blue)
US Route (circle with line)
State Route (circle with line)

FLAT TOP MOUNTAIN, TX
2012