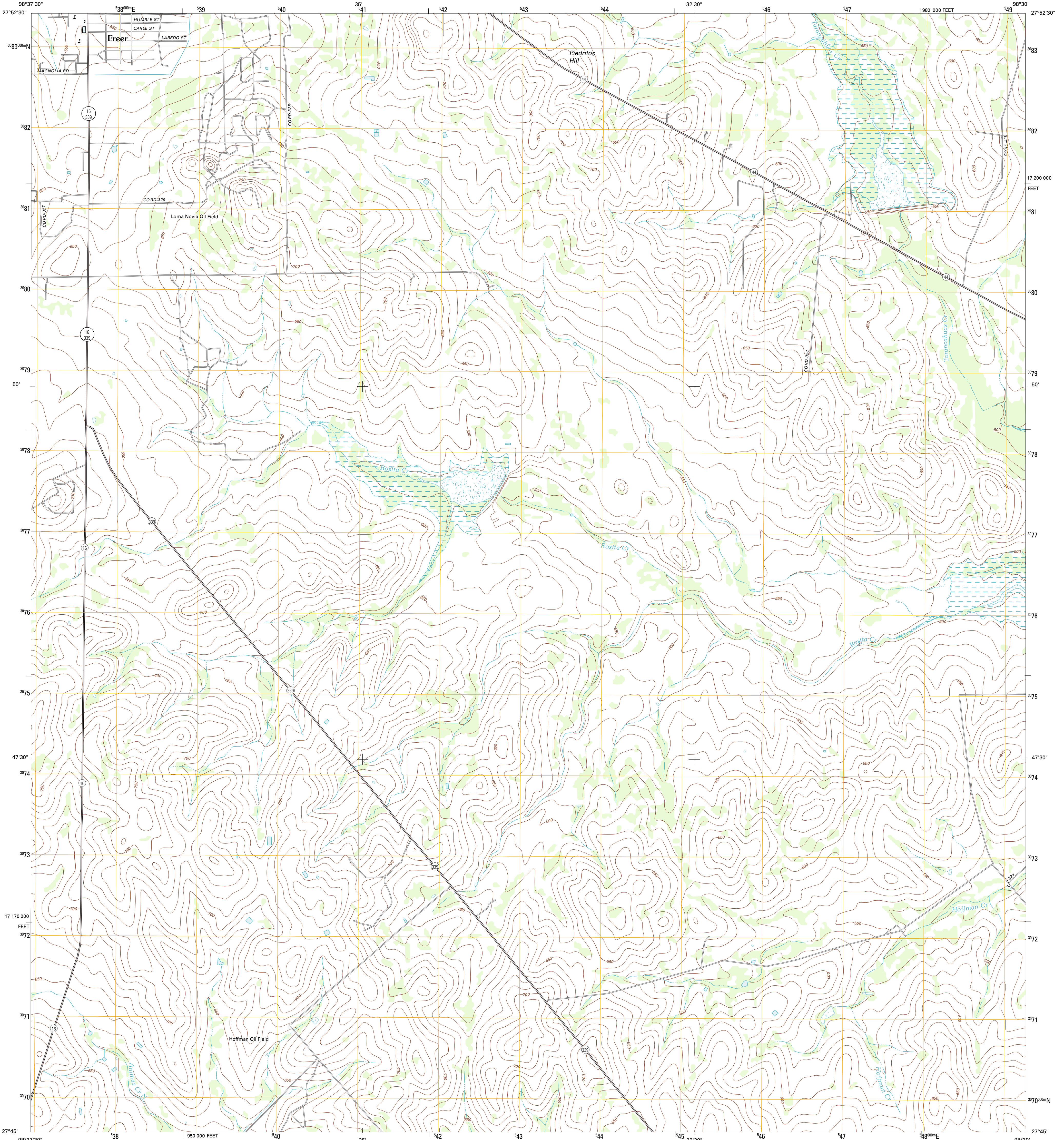




U.S. DEPARTMENT OF THE INTERIOR  
U. S. GEOLOGICAL SURVEY

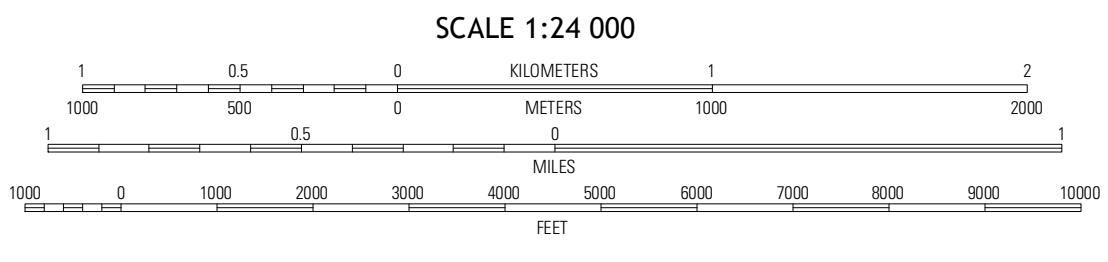
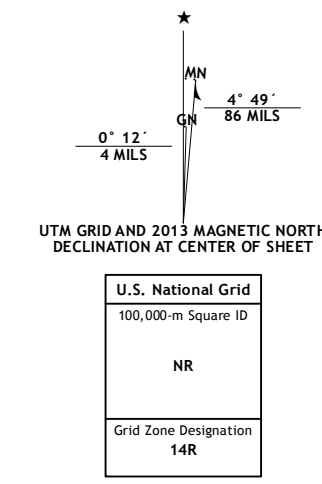


FREER SOUTH QUADRANGLE  
TEXAS-DUVAL CO.  
7.5-MINUTE SERIES

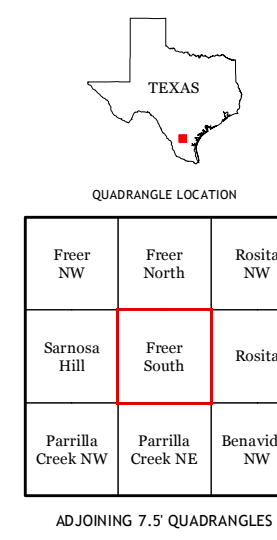


Produced by the United States Geological Survey  
North American Datum of 1983 (NAD83)  
World Geodetic System of 1984 (WGS84). Projection and  
1 000-meter grid: Universal Transverse Mercator, Zone 14R  
10 000-foot ticks: Texas Coordinate System of 1983 (south zone)

Imagery.....NAIP, April 2010  
Roads.....©2006-2012 TomTom  
Names.....GNS, 2012  
Hydrography.....National Hydrography Dataset, 2010  
Contours.....National Elevation Dataset, 2008  
Boundaries.....Census, IBWC, IBC, USGS, 1972 - 2012



SCALE 1:24 000  
CONTOUR INTERVAL 10 FEET  
NORTH AMERICAN VERTICAL DATUM OF 1988  
This map was produced to conform with the  
National Geospatial Program US Topo Product Standards, 2011.  
A metadata file associated with this product is draft version 0.6.7



ROAD CLASSIFICATION

|                  |             |
|------------------|-------------|
| Interstate Route | State Route |
| US Route         | Local Road  |
| Ramp             | 4WD         |
| Interstate Route | US Route    |
|                  | State Route |

QUADRANGLE LOCATION

|                   |                   |              |
|-------------------|-------------------|--------------|
| Freer NW          | Freer North       | Rosita NW    |
| Sarmona Hill      | Freer South       | Rosita       |
| Parrilla Creek NW | Parrilla Creek NE | Benavides NW |

FREER SOUTH, TX  
2013

ADJOINING 7.5 QUADRANGLES