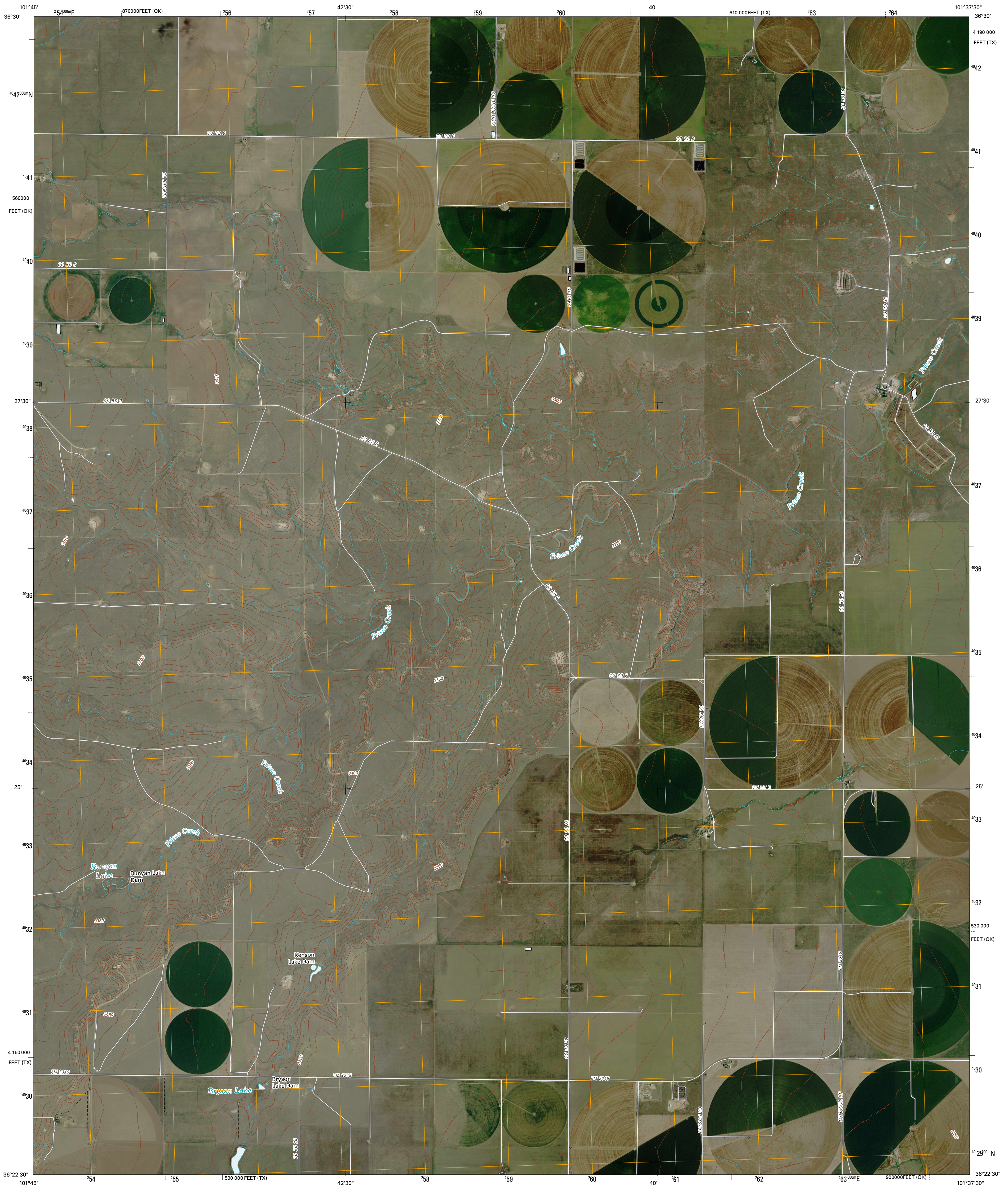




U.S. DEPARTMENT OF THE INTERIOR
U. S. GEOLOGICAL SURVEY

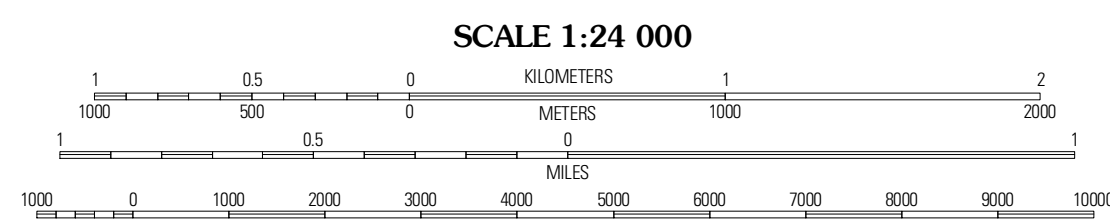
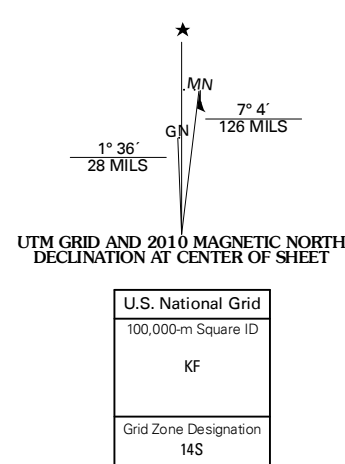


FRISCO CREEK WEST QUADRANGLE
TEXAS-OKLAHOMA
7.5-MINUTE SERIES



Produced by the United States Geological Survey
North American Datum of 1983 (NAD83)
World Geodetic System of 1984 (WGS84). Projection and
1 000-meter grid: Universal Transverse Mercator, Zone 14S
10 000-foot ticks: Texas Coordinate System of 1983
(north zone) and Oklahoma Coordinate System of 1983
(north zone)

Imagery:.....NAP, May 2008 - August 2008
Roads:.....US Census Bureau TIGER data
with limited USGS updates, 2005 - 2006
Names:.....GNIS, 2008
Hydrography:.....National Hydrography Dataset, 1995
Contours:.....National Elevation Dataset, 2002

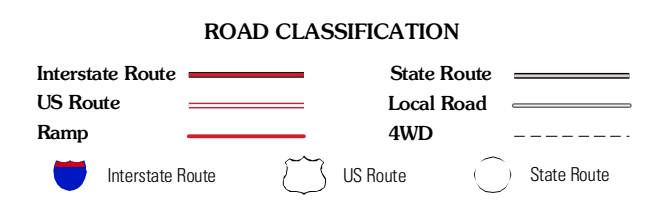


SCALE 1:24 000

CONTOUR INTERVAL 10 FEET



QUADRANGLE LOCATION		
Tedborn North	Goodwell	Goodwell SE
Tedborn South	Frisko Creek West	Frisko Creek East
Stevens SE	Colquhoun Creek	West of Gruver



FRISCO CREEK WEST, TX-OK
2010