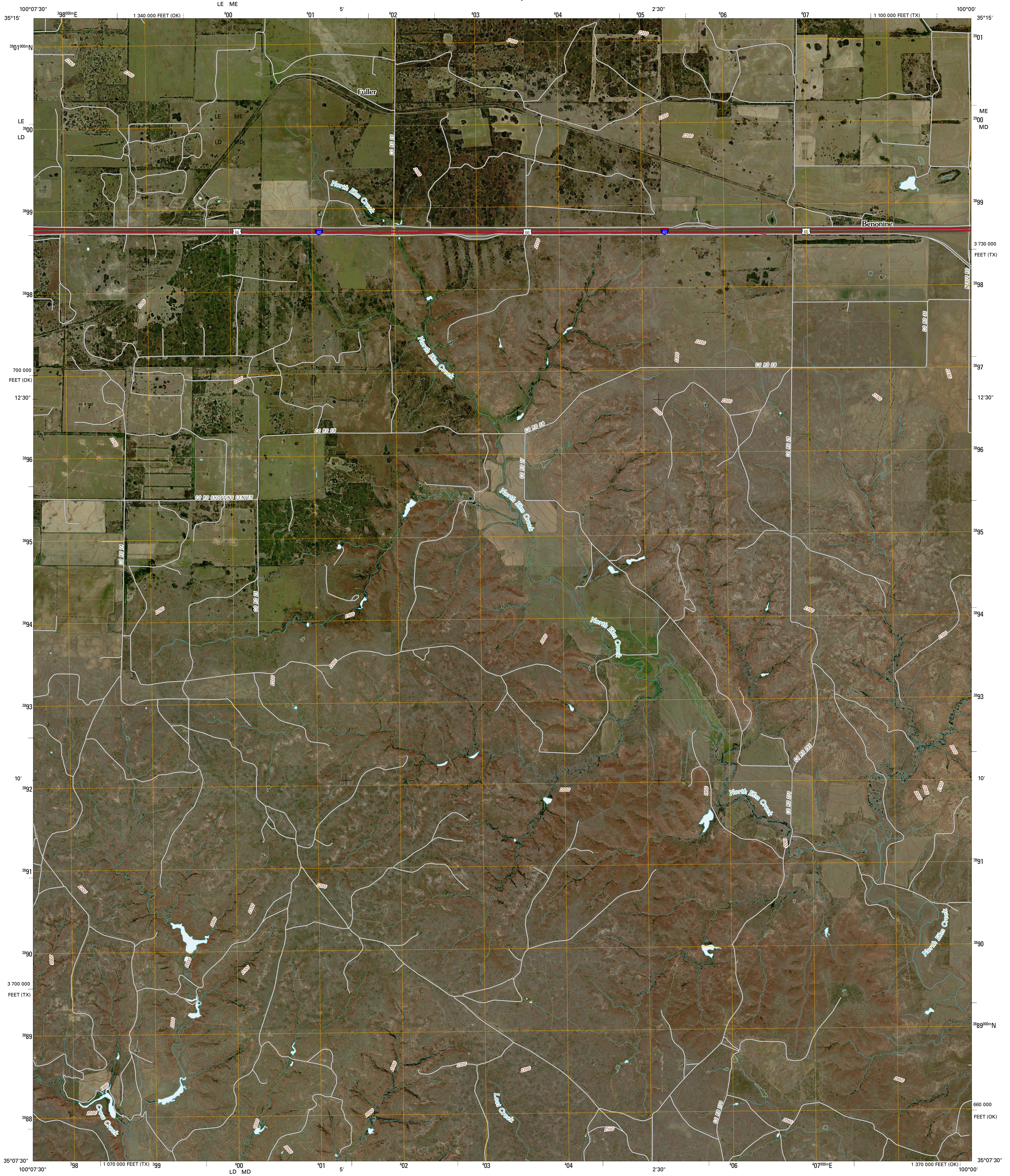




U.S. DEPARTMENT OF THE INTERIOR
U. S. GEOLOGICAL SURVEY

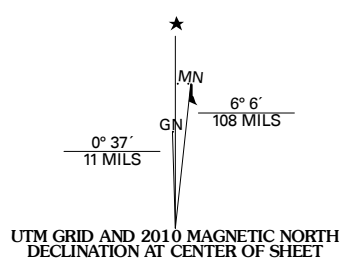


FULLER QUADRANGLE
TEXAS-OKLAHOMA
7.5-MINUTE SERIES

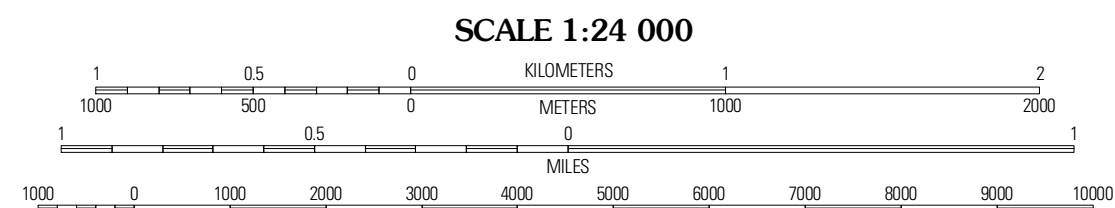


Produced by the United States Geological Survey
North American Datum of 1983 (NAD83)
World Geodetic System of 1984 (WGS84). Projection and
1 000-meter grid: Universal Transverse Mercator, Zone 14S
10 000-foot ticks: Texas Coordinate System of 1983
(north zone) and Oklahoma Coordinate System of 1983
(south zone)

Imagery: NAIP, April 2008 - August 2008
Roads: US Census Bureau TIGER data with limited USGS updates, 2005 - 2006
Names: GNIS, 2008
Hydrography: National Hydrography Dataset, 1995
Contours: National Elevation Dataset, 2000



U.S. National Grid
100 000 Meter Square (10
LE ME
LD MD
Grid Zone Designation
MS

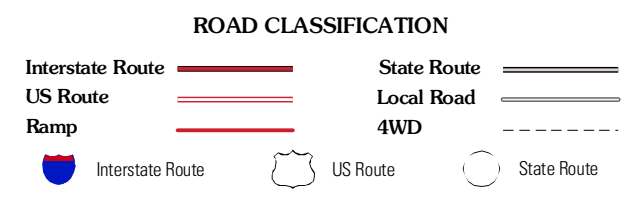


This map was produced to conform with version 0.5.10 of the
draft USGS Standards for 7.5-Minute Quadrangle Maps.
A metadata file associated with this product is also draft version 0.5.10



Quadrangle Location
Tattnall Kelton SE Mayfield
Shamrock East Fuller Texola
Lute Little Wolf Creek Ball Creek

ADJOINING 7.5' QUADRANGLES
TX 35100-114



FULLER, TX-OK
2010