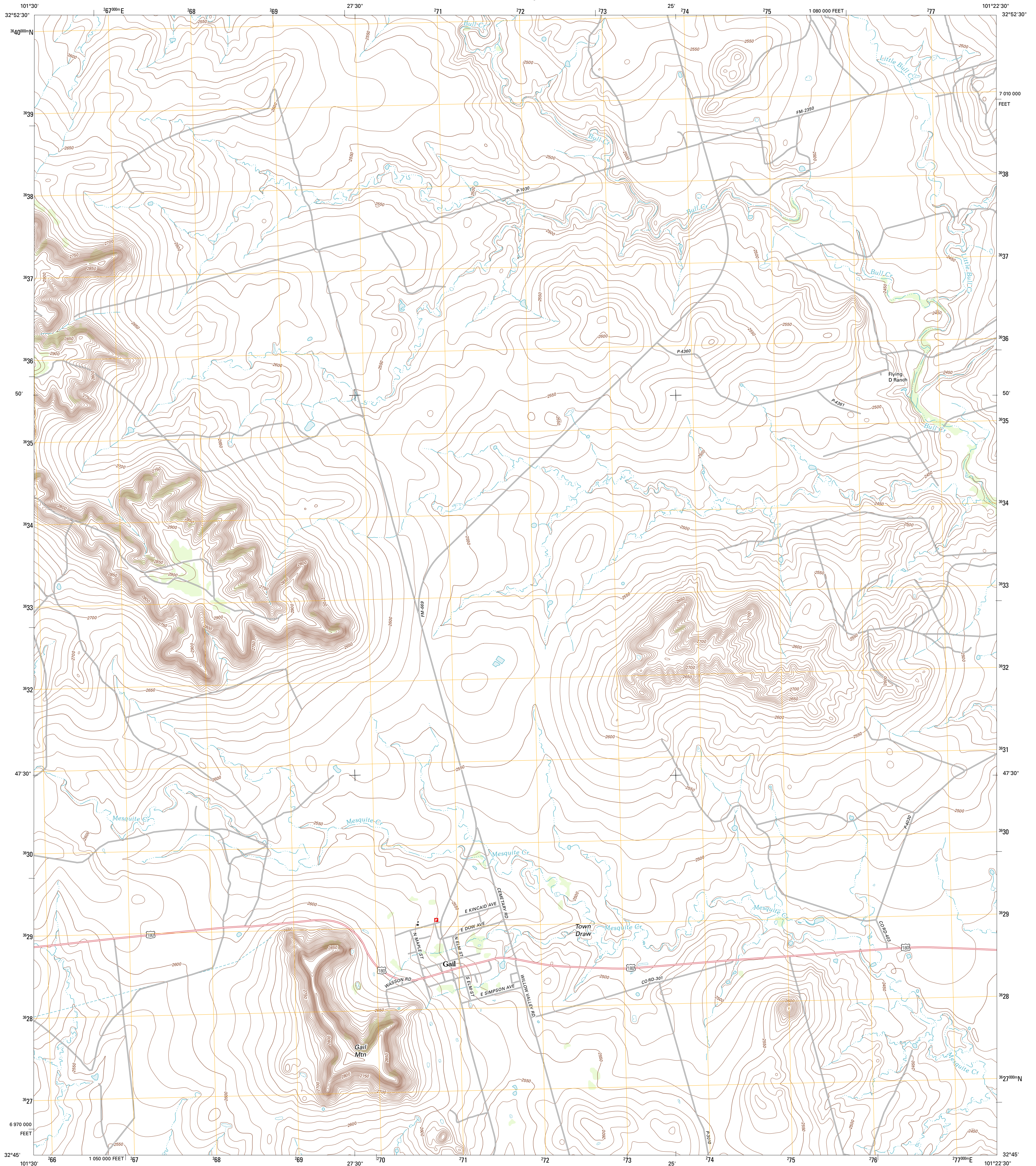




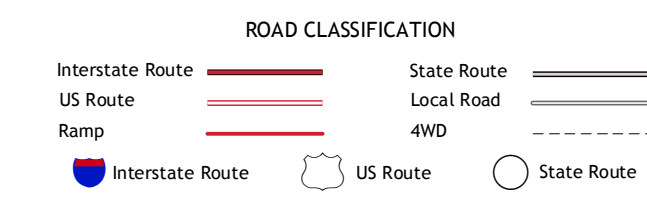
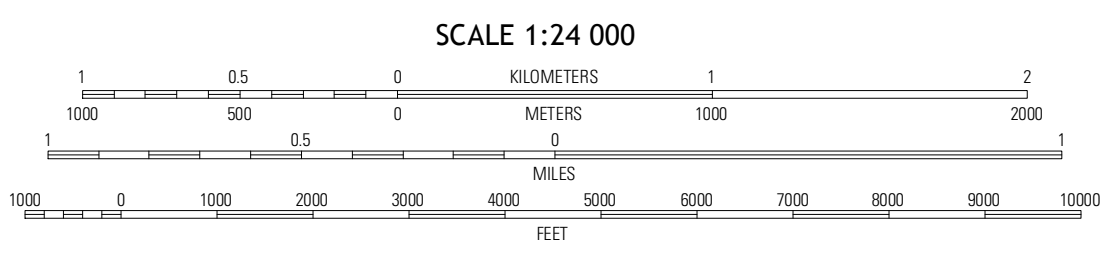
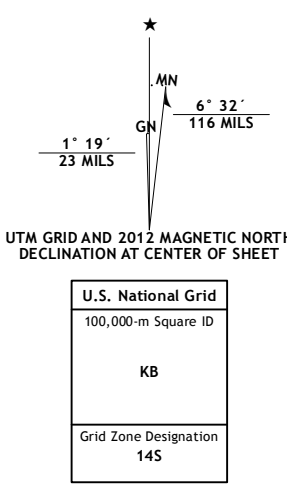
U.S. DEPARTMENT OF THE INTERIOR
U. S. GEOLOGICAL SURVEY



GAIL QUADRANGLE
TEXAS-BORDEN CO.
7.5-MINUTE SERIES



Produced by the United States Geological Survey
North American Datum of 1983 (NAD83)
World Geodetic System of 1984 (WGS84). Projection and
1000-meter grid: Universal Transverse Mercator, Zone 14S
10 000-foot ticks: Texas Coordinate System of 1983 (north
central zone)



QUADRANGLE LOCATION

Indian Canyon NE	Beal Hollow	Gail NE
Holloway Canyon	Gail	Pivemile Creek
Long Draw	Mushaway Peak	Gumlight Draw NE

ADJOINING 7.5 QUADRANGLES

SCALE 1:24 000
CONTOUR INTERVAL 10 FEET
NORTH AMERICAN VERTICAL DATUM OF 1988
This map was produced to conform with the
National Geospatial Program US Topo Product Standards, 2011.
A metadata file associated with this product is draft version 0.6.7

GAIL, TX
2012