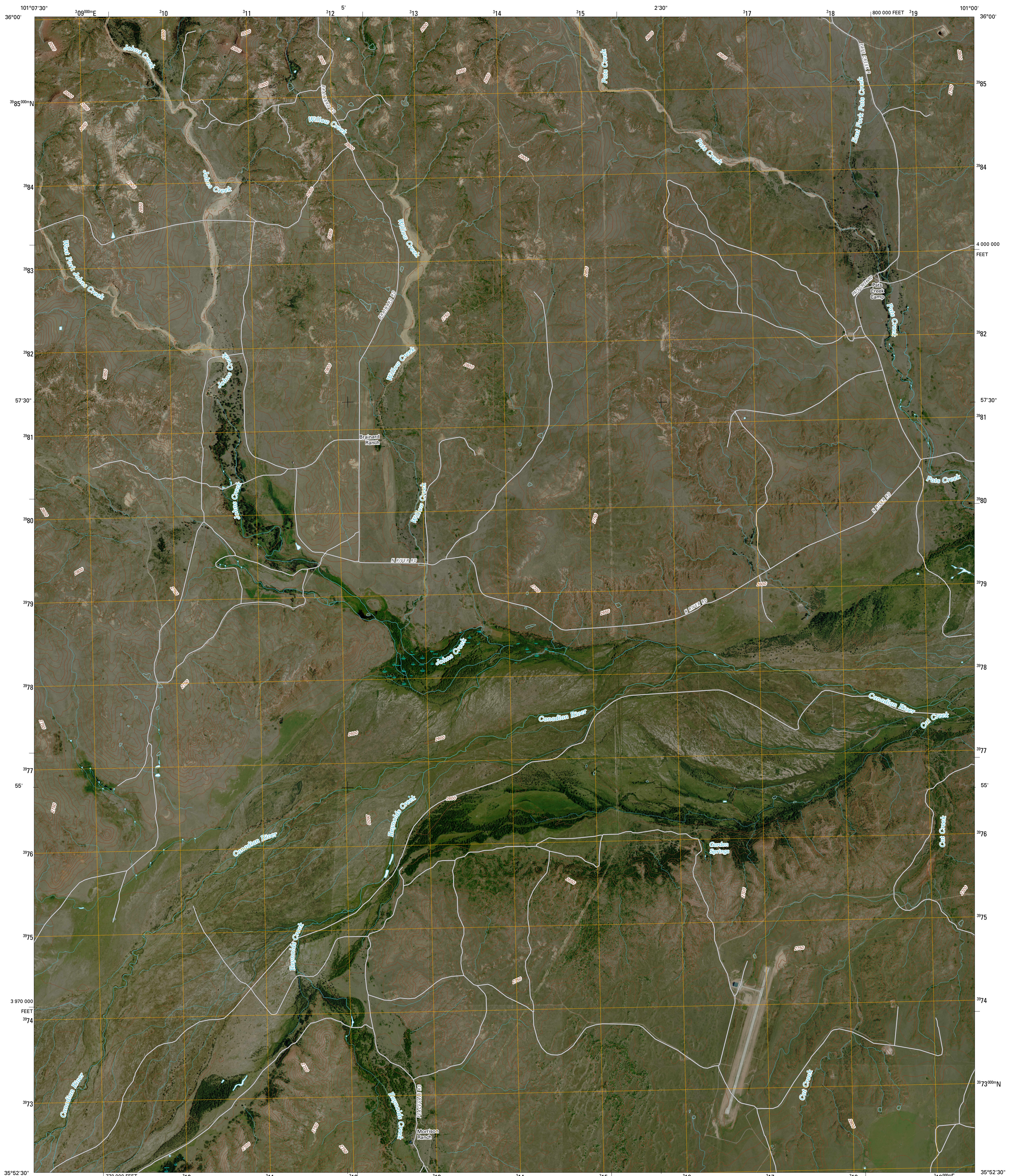




U.S. DEPARTMENT OF THE INTERIOR
U. S. GEOLOGICAL SURVEY

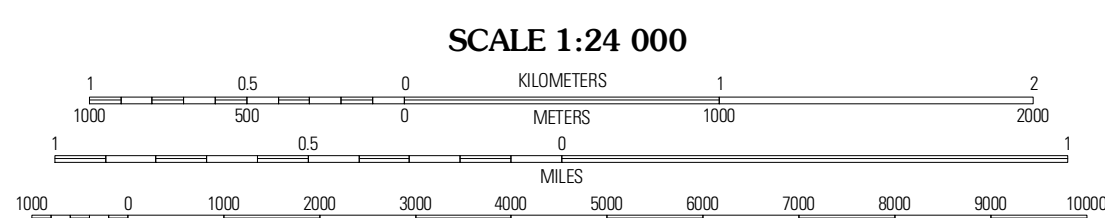
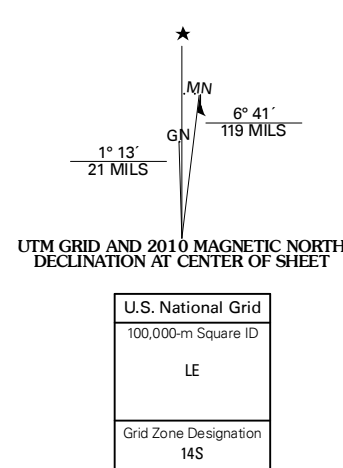


GARDEN SPRINGS QUADRANGLE
TEXAS
7.5-MINUTE SERIES



Produced by the United States Geological Survey
North American Datum of 1983 (NAD83)
World Geodetic System of 1984 (WGS84). Projection and
1 000-meter grid: Universal Transverse Mercator, Zone 14S
10 000-foot ticks: Texas Coordinate System of 1983
(north zone)

Imagery.....NAIP, August 2008
Roads.....US Census Bureau TIGER data
with limited USGS updates, 2005 - 2006
Names.....GNIS, 2008
Hydrography.....National Hydrography Dataset, 1996
Contours.....National Elevation Dataset, 2002



CONTOUR INTERVAL 10 FEET

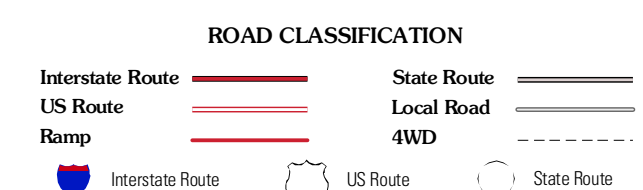
This map was produced to conform with version 0.5.10 of the
draft USGS Standards for 7.5-Minute Quadrangle Maps.
A metadata file associated with this product is also draft version 0.5.10



QUADRANGLE LOCATION

Holt	Spearman SE	Soundough Creek SW
Adobe Creek	Garden Springs	Dry Creek North
Adobe Creek SW	Adobe Creek SE	Dry Creek South

ADJOINING 7.5' QUADRANGLES
TX 35101-444



GARDEN SPRINGS, TX
2010