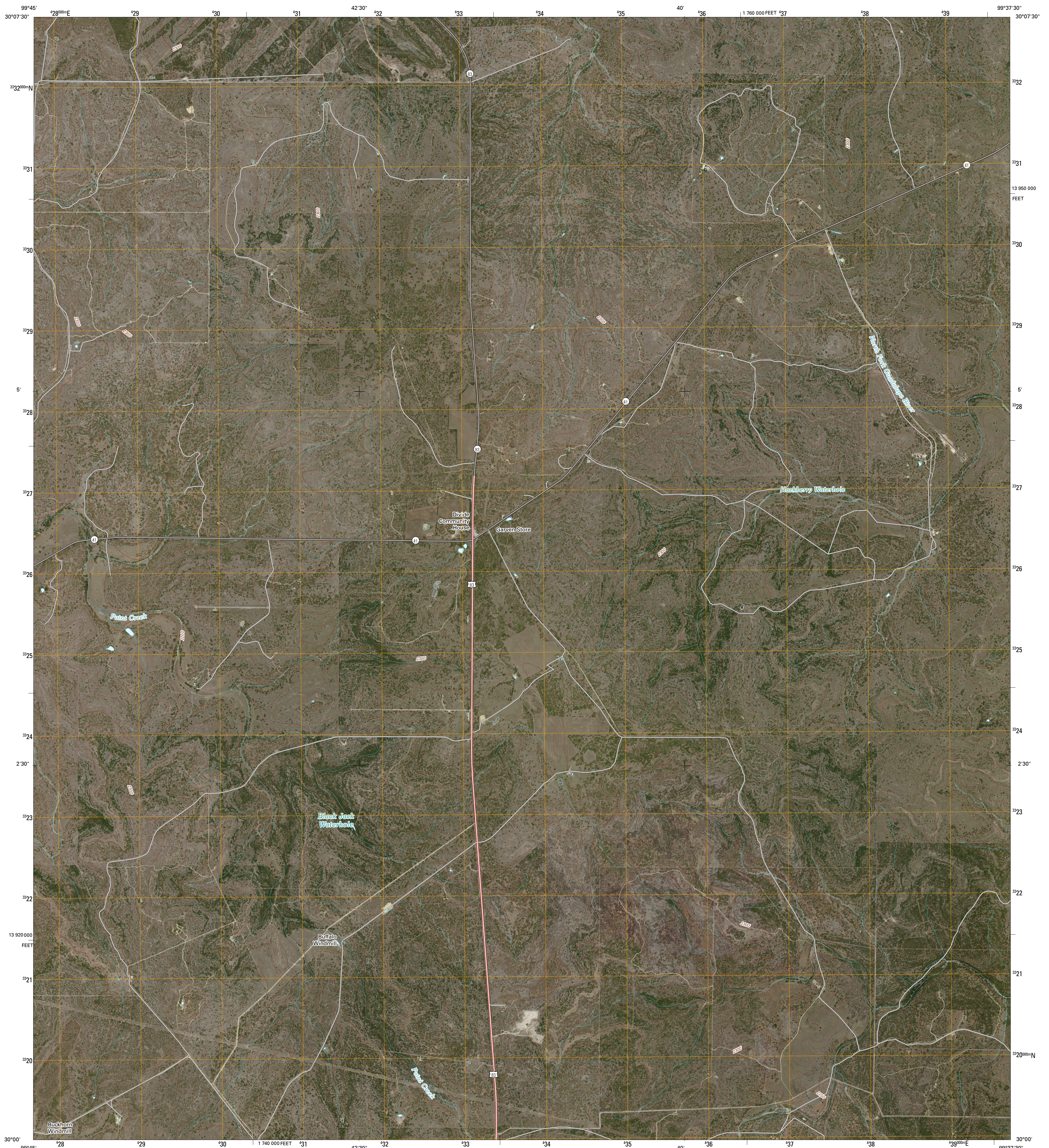




U.S. DEPARTMENT OF THE INTERIOR
U. S. GEOLOGICAL SURVEY

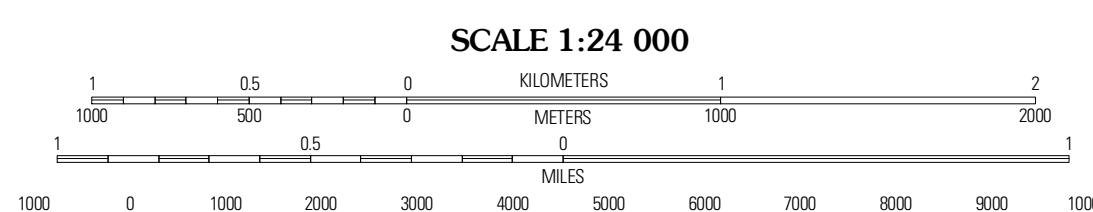
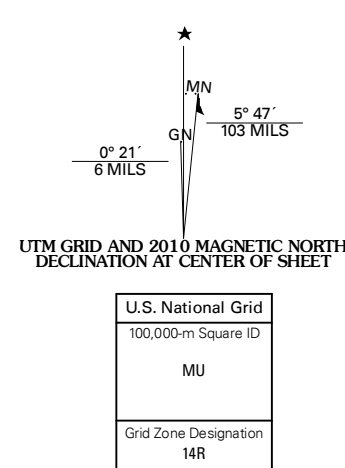


GARVEN STORE QUADRANGLE
TEXAS
7.5-MINUTE SERIES



Produced by the United States Geological Survey
North American Datum of 1983 (NAD83)
World Geodetic System of 1984 (WGS84). Projection and
1 000-meter grid: Universal Transverse Mercator, Zone 14R
10 000-foot ticks: Texas Coordinate System of 1983
(south central zone)

Imagery.....NAP, May 2008
Roads.....US Census Bureau TIGER data
with limited USGS updates, 2004 - 2006
Names.....GNIS, 2008
Hydrography.....National Hydrography Dataset, 1995
Contours.....National Elevation Dataset, 2004



SCALE 1:24 000

CONTOUR INTERVAL 20 FEET

This map was produced to conform with version 0.5.10 of the
draft USGS Standards for 7.5-Minute Quadrangle Maps.
A metadata file associated with this product is also draft version 0.5.10



QUADRANGLE LOCATION		
Horse Camp Waterhole	V O Ranch	Low Oak Ranch
Earwood Creek	Garven Store	Boneyard Draw
Bea Case Hollow	Hibbert Ranch	Well Hollow

ROAD CLASSIFICATION		
Interstate Route	State Route	Local Road
US Route	Local Road	4WD
Ramp	Interstate Route	US Route
		State Route

GARVEN STORE, TX
2010

ADJOINING 7.5' QUADRANGLES
TX 3099-212