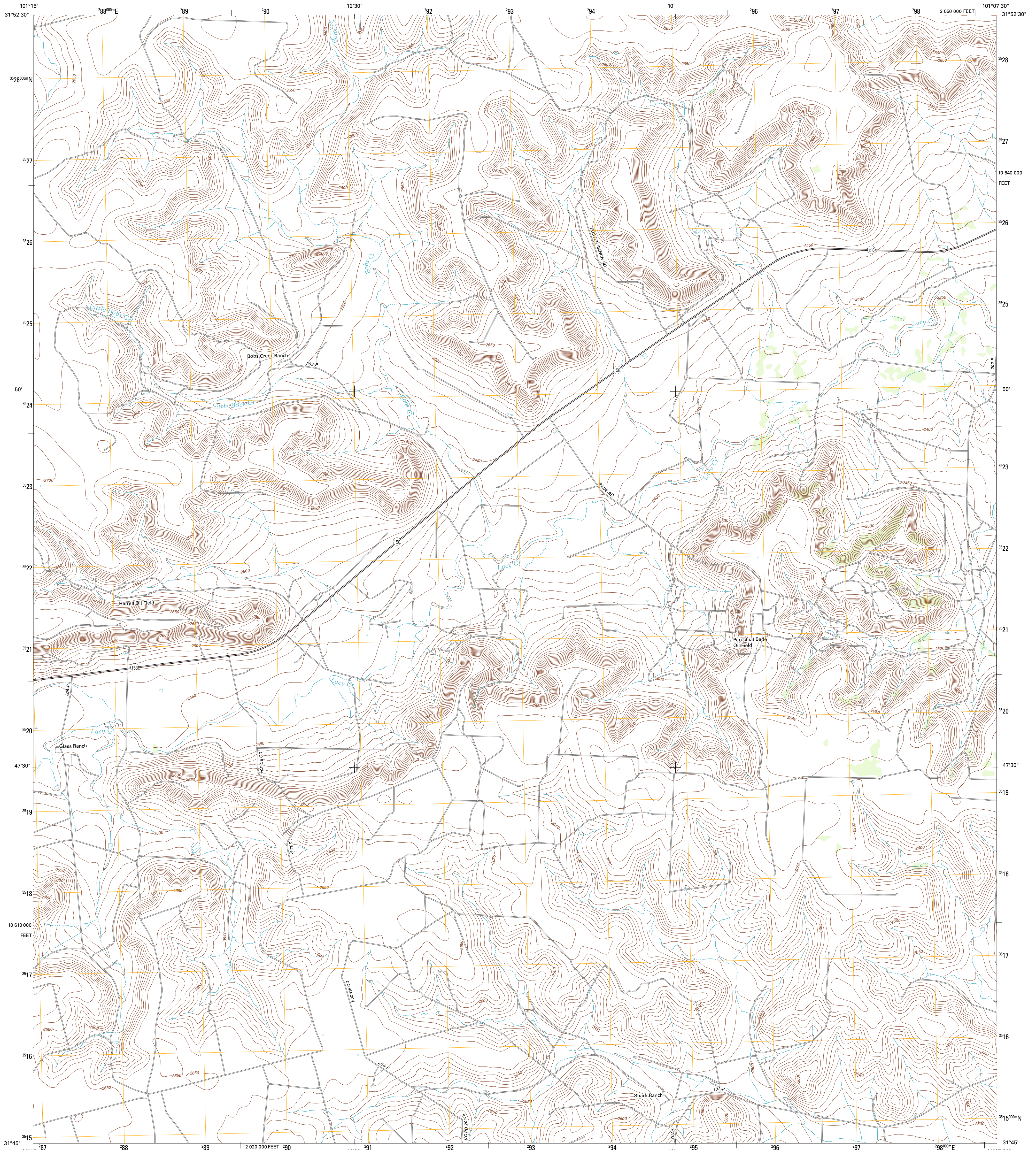




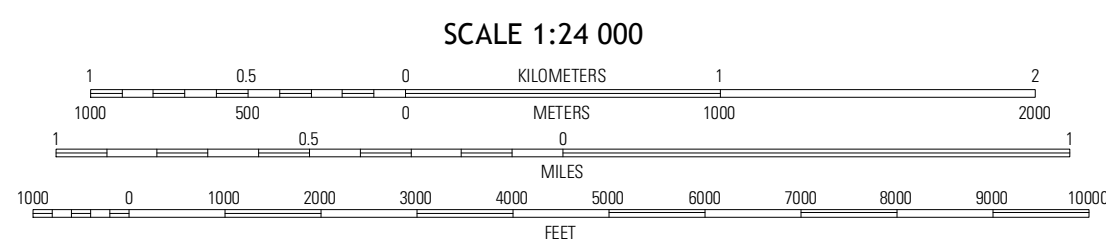
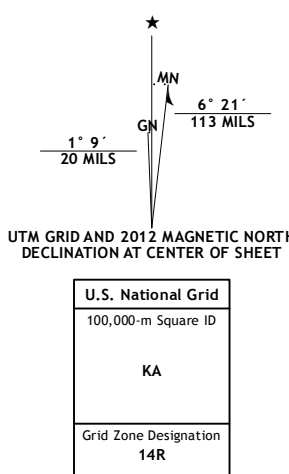
U.S. DEPARTMENT OF THE INTERIOR  
U. S. GEOLOGICAL SURVEY



GLASS RANCH QUADRANGLE  
TEXAS-STERLING CO.  
7.5-MINUTE SERIES



Produced by the United States Geological Survey  
North American Datum of 1983 (NAD83)  
World Geodetic System of 1984 (WGS84). Projection and  
1 000-meter grid: Universal Transverse Mercator, Zone 14R  
10 000-foot ticks: Texas Coordinate System of 1983 (central  
zone)



ROAD CLASSIFICATION  
Interstate Route (thick red line)  
US Route (red line)  
Ramp (red line with blue triangle)  
State Route (grey line)  
Local Road (thin grey line)  
4WD (dashed grey line)

QUADRANGLE LOCATION

Garden City NE	Sand Bluff Draw	Cumby Draw NE
Carrie Reservoir	Glass Ranch	Cumby Draw
Three Bluff Draw NE	Coom Draw NW	Dripping Springs Draw

ADJOINING 7.5 QUADRANGLES

CONTOUR INTERVAL 10 FEET  
NORTH AMERICAN VERTICAL DATUM OF 1988  
This map was produced to conform with the  
National Geospatial Program US Topo Product Standard, 2011.  
A metadata file associated with this product is draft version 0.6.7

GLASS RANCH, TX  
2012