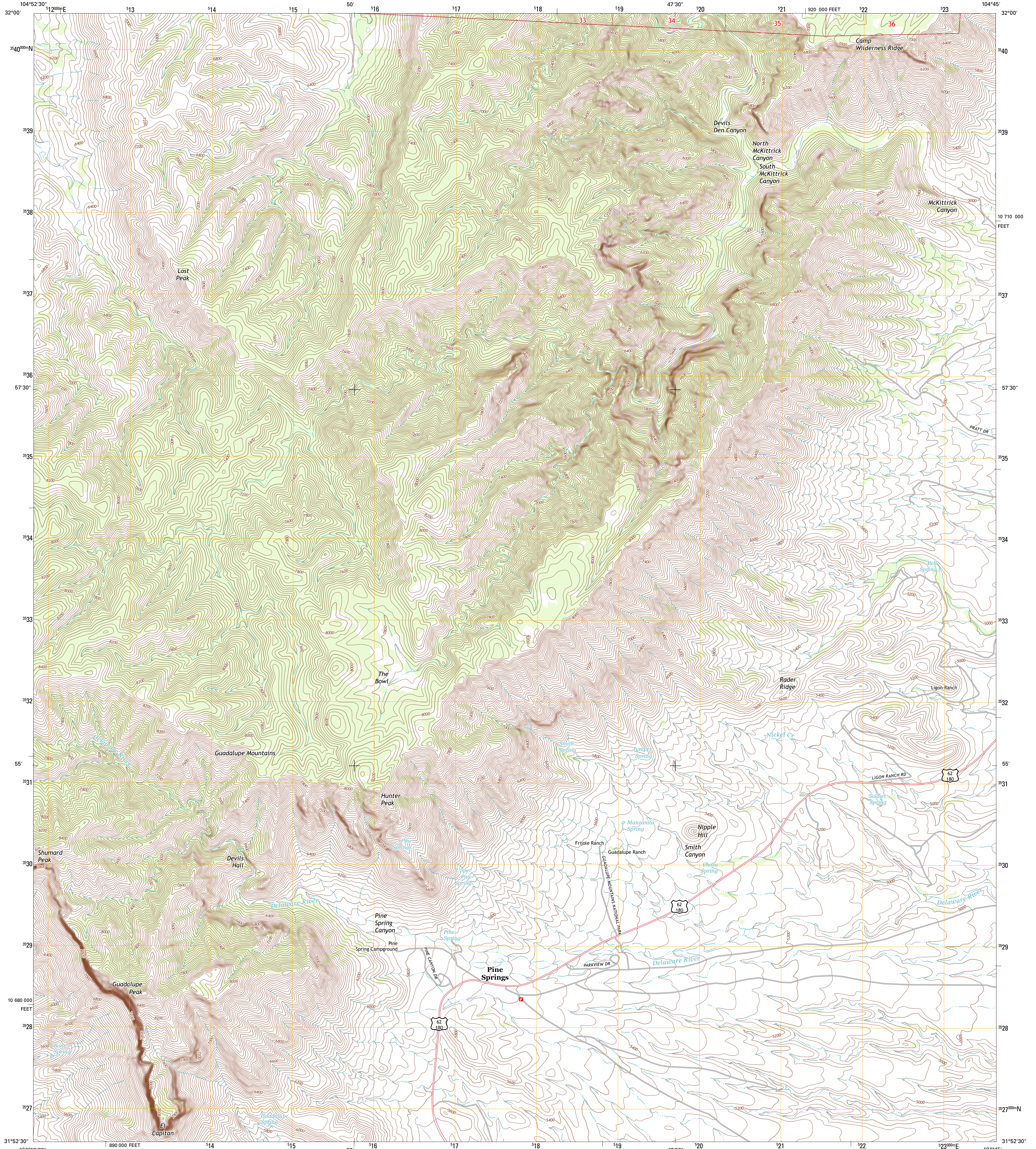




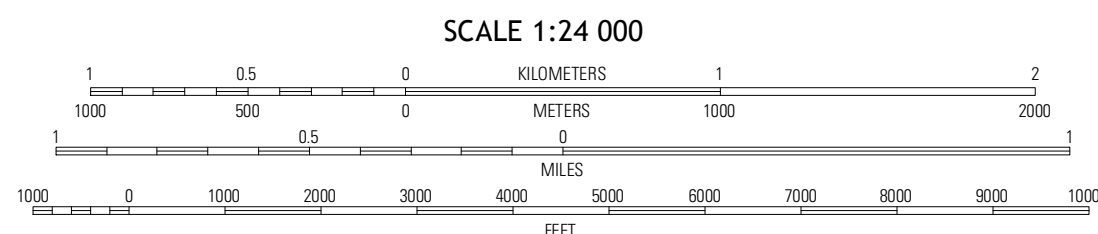
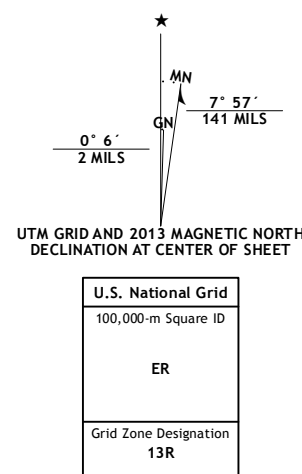
U.S. DEPARTMENT OF THE INTERIOR
U. S. GEOLOGICAL SURVEY



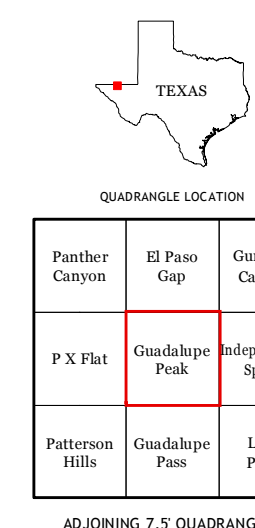
GUADALUPE PEAK QUADRANGLE
TEXAS-CULBERSON CO.
7.5-MINUTE SERIES



Produced by the United States Geological Survey
North American Datum of 1983 (NAD83)
World Geodetic System of 1984 (WGS84). Projection and
1 000-meter grid: Universal Transverse Mercator, Zone 13R
10 000-foot ticks: Texas Coordinate System of 1983 (central
zone)



CONTOUR INTERVAL 40 FEET
NORTH AMERICAN VERTICAL DATUM OF 1988
This map was produced to conform with the
National Geospatial Program US Topo Product Standard, 2011.
A metadata file associated with this product is draft version 0.6.7



ROAD CLASSIFICATION

Interstate Route	State Route
US Route	Local Road
Ramp	4WD
Interstate Route	US Route
	State Route

Imagery.....NAIP, August 2010
Roads.....©2006-2012 TomTom
Names.....©2006-2012 TomTom
Hydrography.....National Hydrography Dataset, 2010
Contours.....National Elevation Dataset, 2005
Boundaries.....Census, IBWC, IBC, USGS, 1972 - 2012

U.S. National Grid 100,000-m Square ID
ER
Grid Zone Designation 13R

QUADRANGLE LOCATION

Panther Canyon	El Paso Gap	Ginsight Canyon
P.X. Flat	Guadalupe Peak	Independence Spring
Pattern Hills	Guadalupe Pass	Long Point

ADJOINING 7.5 QUADRANGLES

GUADALUPE PEAK, TX
2013