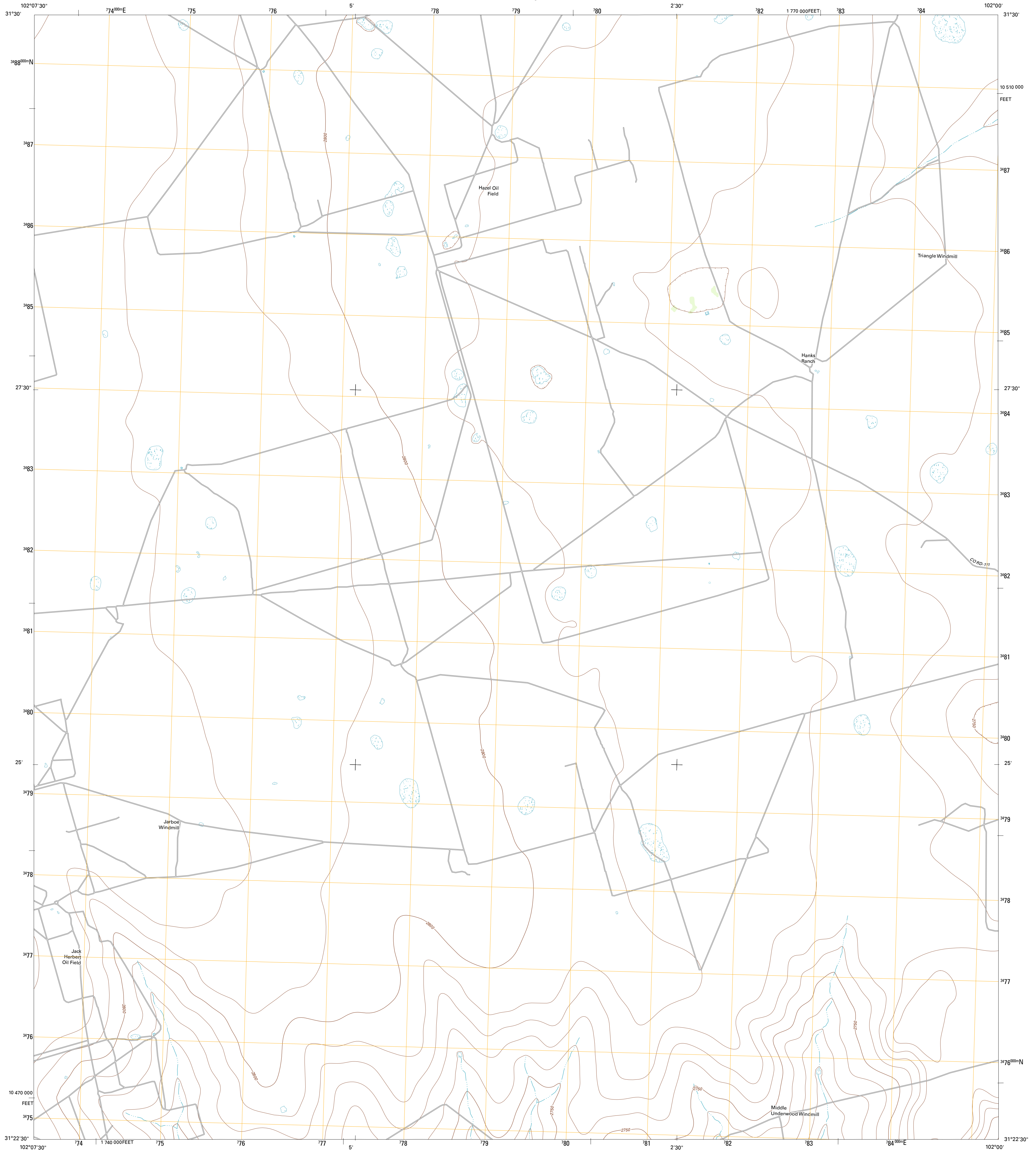




U.S. DEPARTMENT OF THE INTERIOR
U. S. GEOLOGICAL SURVEY

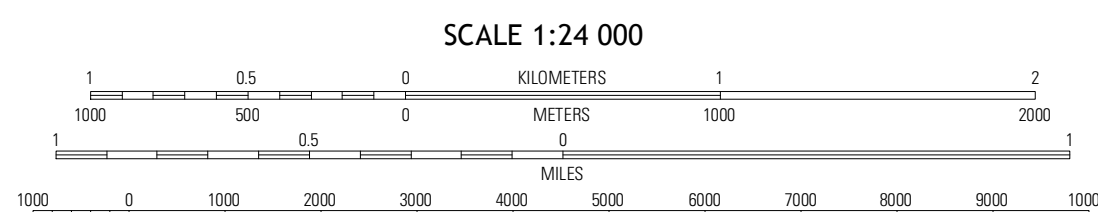
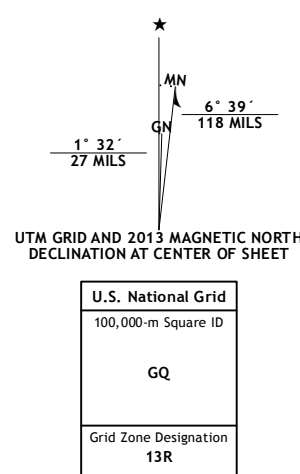


HANKS RANCH QUADRANGLE
TEXAS-UPTON CO.
7.5-MINUTE SERIES



Produced by the United States Geological Survey
North American Datum of 1983 (NAD83)
World Geodetic System of 1984 (WGS84) - Projection and
1,000-meter grid: Universal Transverse Mercator, Zone 13R
10,000-foot ticks: Texas Coordinate System of 1983 (central zone)

Imagery.....NAIP, August 2010
Roads.....©2006-2012 TomTom
Names.....GNS, 2012
Hydrography.....National Hydrography Dataset, 2010
Contours.....National Elevation Dataset, 2008
Boundaries.....Census, IBWC, IBC, USGS, 1972 - 2012



CONTOUR INTERVAL 10 FEET
NORTH AMERICAN VERTICAL DATUM OF 1988

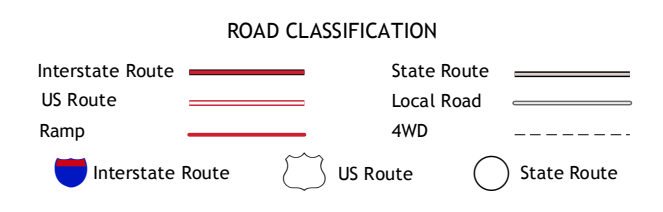
This map was produced to conform with the
National Geospatial Program US Topo Product Standards, 2011.
A metadata file associated with this product is draft version 0.6.7



QUADRANGLE LOCATION

Benge Corner SW	Benge Corner SE	Midkiff SW
McElroy Ranch	Hanks Ranch	Lindsey Ranch
Marlboro Canyon	Marlboro Canyon SE	Sevensmile Corner

ADJOINING 7.5 QUADRANGLES



HANKS RANCH, TX
2013