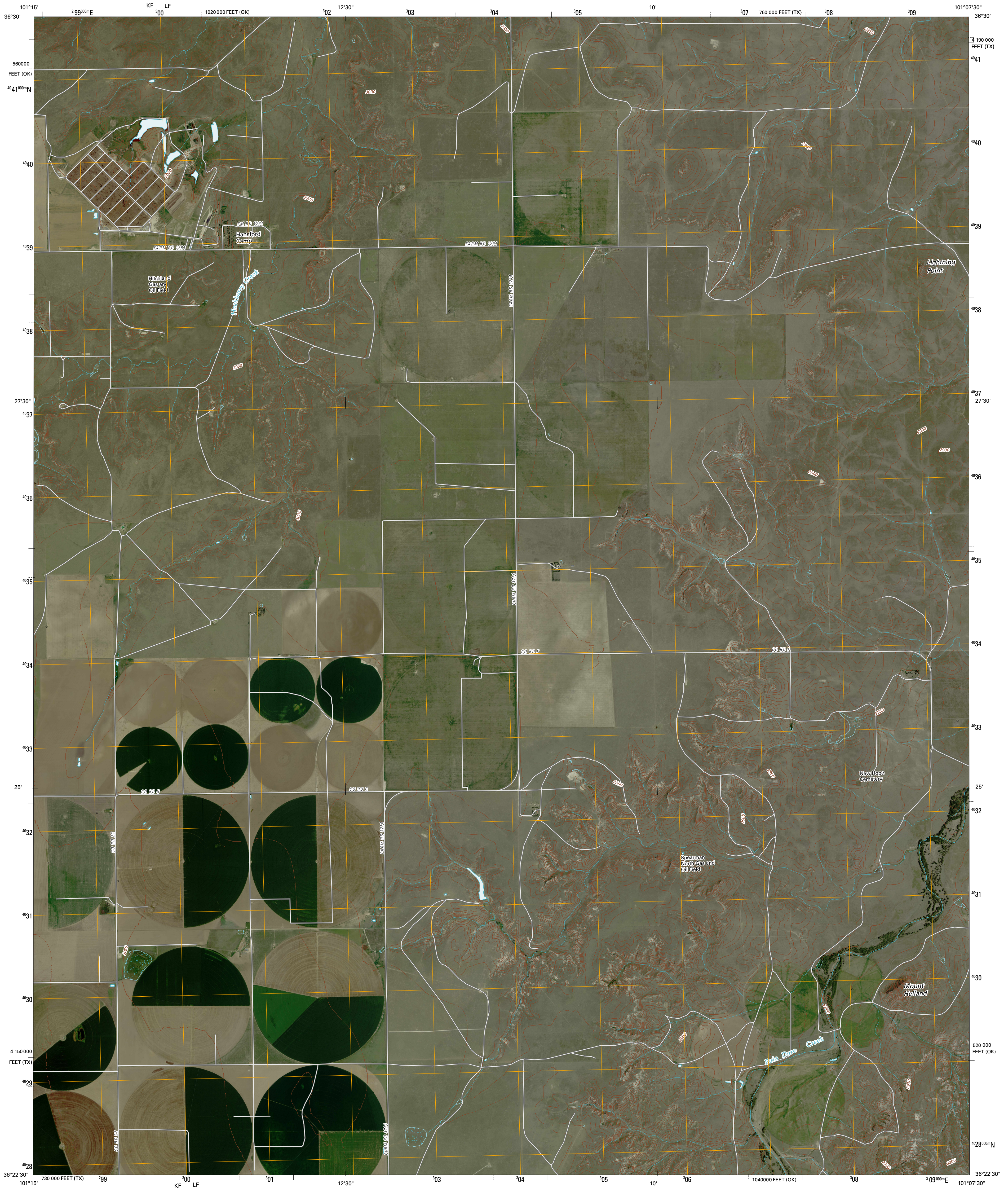




U.S. DEPARTMENT OF THE INTERIOR
U. S. GEOLOGICAL SURVEY

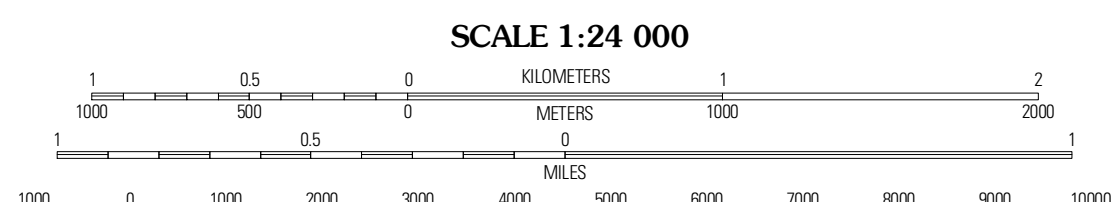
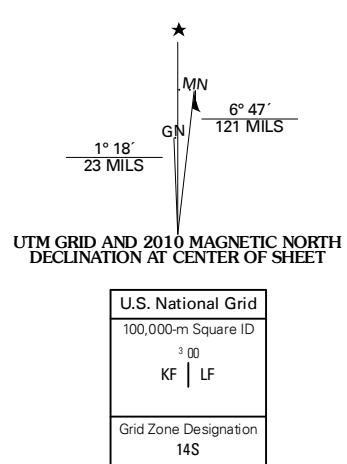


HANSFORD CAMP QUADRANGLE
TEXAS-OKLAHOMA
7.5-MINUTE SERIES



Produced by the United States Geological Survey
North American Datum of 1983 (NAD83)
World Geodetic System of 1984 (WGS84). Projection and
1 000-meter grid: Universal Transverse Mercator, Zone 14S
10 000-foot ticks: Texas Coordinate System of 1983
(north zone) and Oklahoma Coordinate System of 1983
(north zone)

Imagery.....NAIP, April 2008 - August 2008
Roads.....US Census Bureau TIGER data
with limited USGS updates, 2005 - 2006
Names.....GNIS, 2008
Hydrography.....National Hydrography Dataset, 1995
Contours.....National Elevation Dataset, 2002



CONTOUR INTERVAL 10 FEET
NORTH AMERICAN VERTICAL DATUM OF 1988

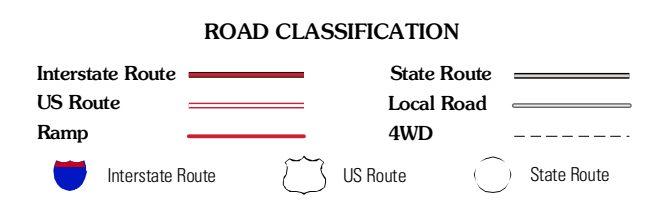
This map was produced to conform with version 0.5.10 of the
draft USGS Standards for 7.5-Minute Quadrangle Maps.
A metadata file associated with this product is also draft version 0.5.10



QUADRANGLE LOCATION

Gaymon SE	Hardesty	Hardesty SE
Bernstein	Hansford Camp	Horseshoe Hill
Kimball	Waka SW	Waka

ADJOINING 7.5 QUADRANGLES
TX 36101-143



HANSFORD CAMP, TX-OK
2010