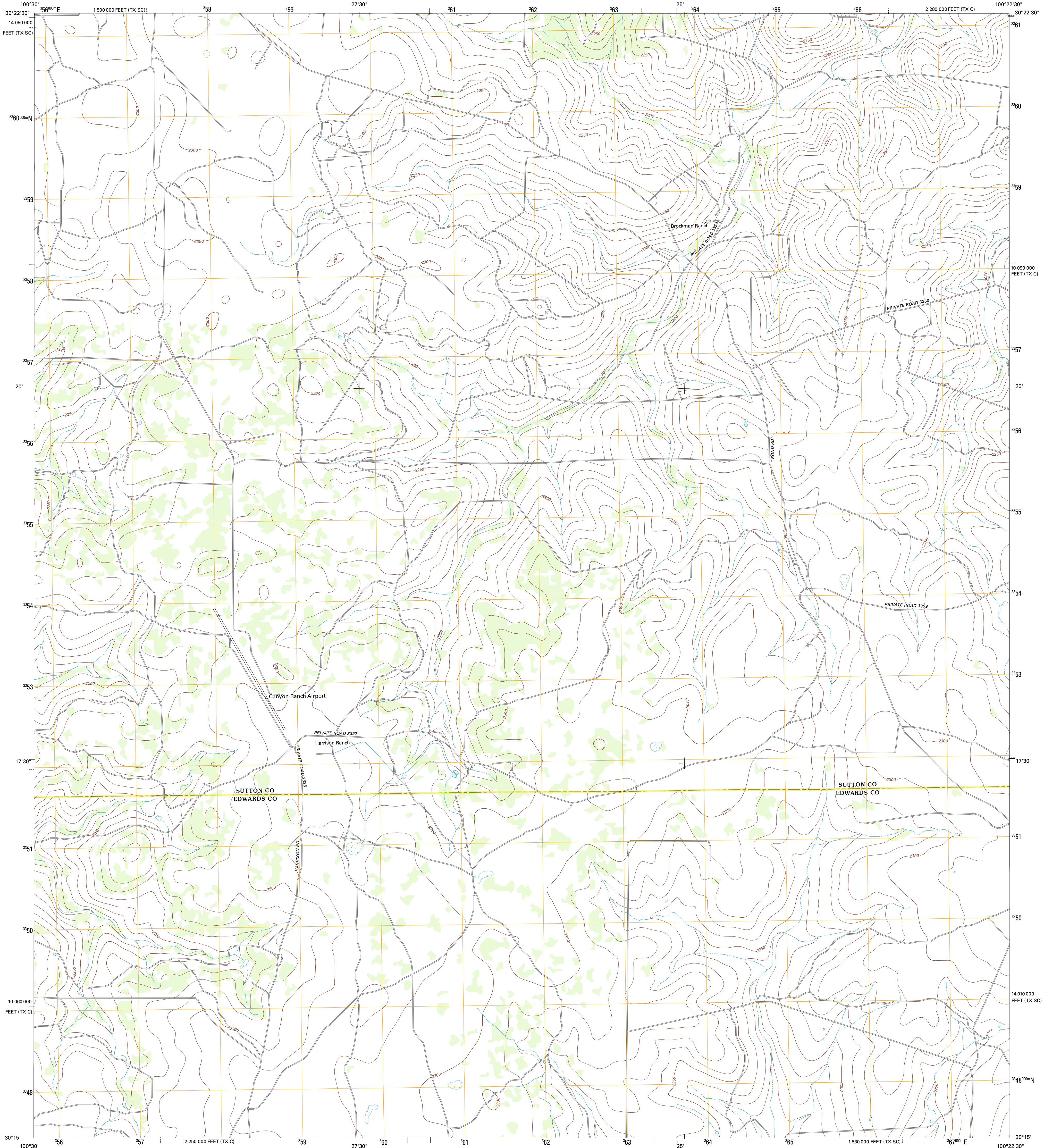




U.S. DEPARTMENT OF THE INTERIOR  
U. S. GEOLOGICAL SURVEY

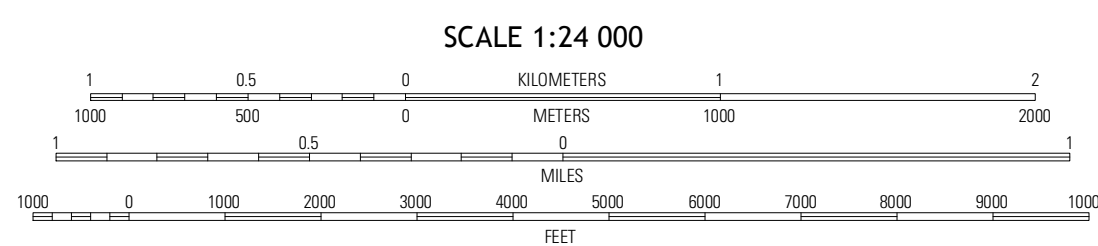
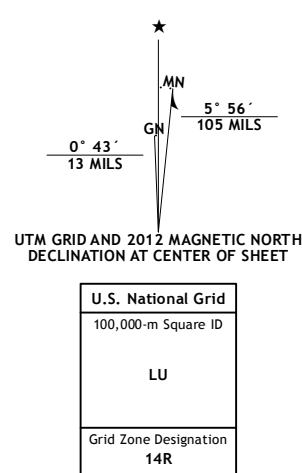


HARRISON RANCH QUADRANGLE  
TEXAS  
7.5-MINUTE SERIES



Produced by the United States Geological Survey  
North American Datum of 1983 (NAD83)  
World Geodetic System of 1984 (WGS84). Projection and  
1 200-meter grid: Universal Transverse Mercator, Zone 14R,  
10 000-foot ticks: Texas Coordinate System of 1983 (central and  
south central zones)

Imagery.....NAP, May 2010  
Roads.....©2006-2012 TomTom  
Names.....GNSS, 2012  
Hydrography.....National Hydrography Dataset, 2010  
Contours.....National Elevation Dataset, 2006  
Boundaries.....Census, BWC, IBC, USGS, 1972 - 2012



CONTOUR INTERVAL 10 FEET  
NORTH AMERICAN VERTICAL DATUM OF 1988  
This map was produced to conform with the  
National Geospatial Program US Topo Product Standard, 2011.  
A metadata file associated with this product is draft version 0.6.7



QUADRANGLE LOCATION

Dunbar Draw NE	Steen Lake	Live Oak Draw
Dunbar Draw SE	Harrison Ranch	Stewart Ranch
Turney Draw NE	Ray Lake NW	Ray Lake

ROAD CLASSIFICATION

Interstate Route	State Route
US Route	Local Road
Ramp	4WD

HARRISON RANCH, TX  
2012

ADJOINING 7.5 QUADRANGLES