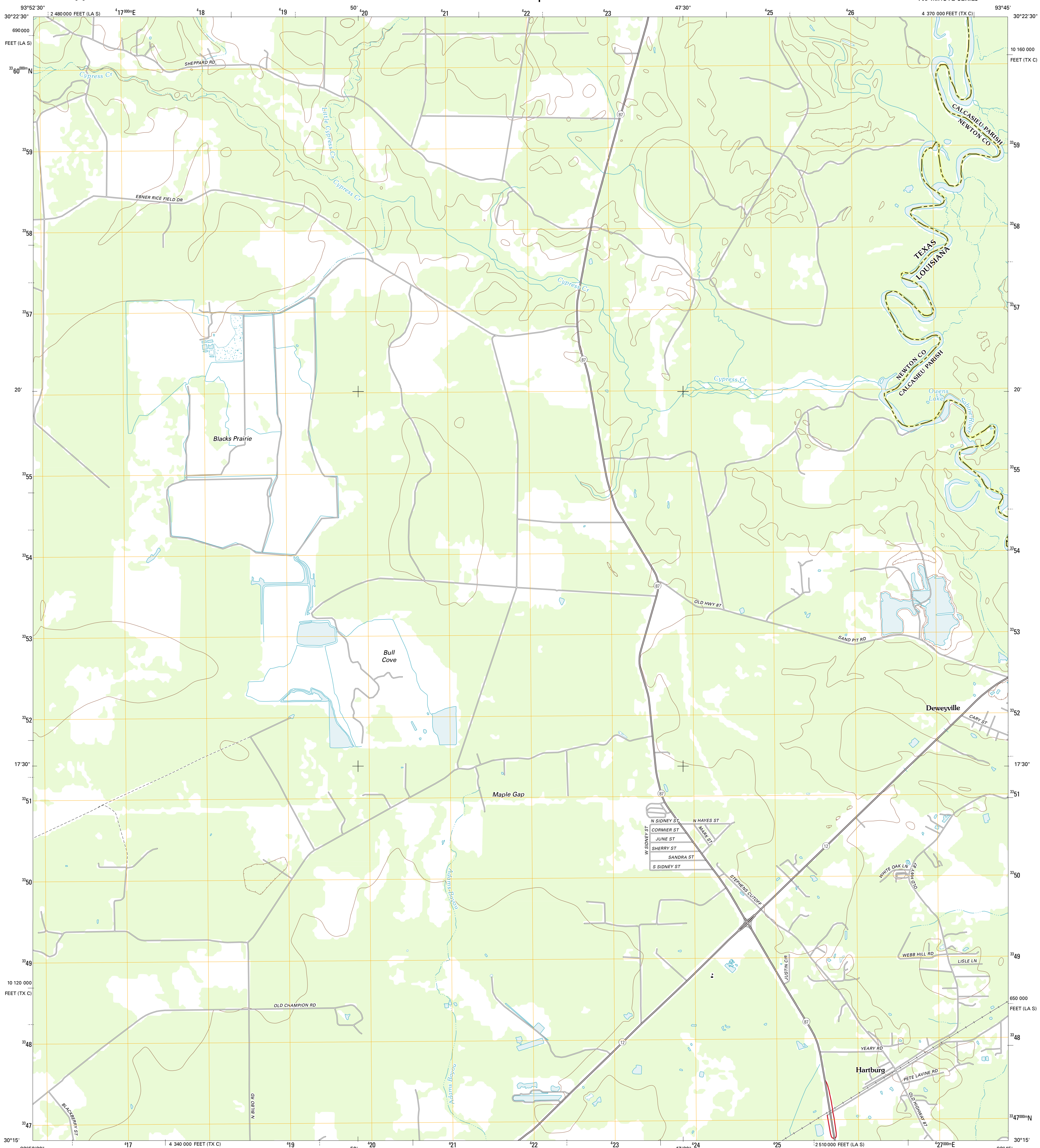




U.S. DEPARTMENT OF THE INTERIOR  
U. S. GEOLOGICAL SURVEY



HARTBURG QUADRANGLE  
TEXAS-LOUISIANA  
7.5-MINUTE SERIES



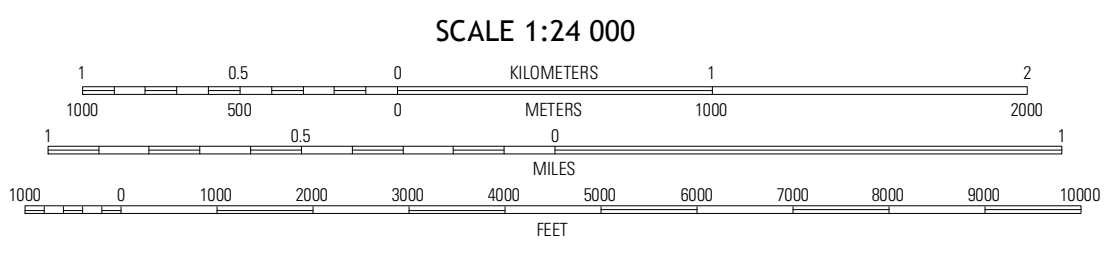
Produced by the United States Geological Survey  
North American Datum of 1983 (NAD83)  
World Geodetic System of 1984 (WGS84). Projection and  
1 000-meter grid: Universal Transverse Mercator, Zone 15R  
10 000-foot ticks: Texas Coordinate System of 1983 (central  
zone), Louisiana Coordinate System of 1983 (south zone)

Imagery.....NAP, April 2010  
Roads.....©2006-2012 TomTom  
Names.....GNSS, 2012  
Hydrography.....National Hydrography Dataset, 2010  
Contours.....National Elevation Dataset, 2004  
Boundaries.....Census, IBC, USGS, 1972 - 2012

UTM GRID AND 2012 MAGNETIC NORTH DECLINATION AT CENTER OF SHEET

U.S. National Grid  
100,000-m Square ID  
vp

Grid Zone Designation  
15R



CONTOUR INTERVAL 10 FEET  
NORTH AMERICAN VERTICAL DATUM OF 1988

This map was produced to conform with the  
National Geospatial Program US Topo Product Standard, 2011.  
A metadata file associated with this product is draft version 0.6.7



QUADRANGLE LOCATION

Bena	Soldub Bluff	Shute Creek
Gist	Hartburg	Starks
Teala	Maurierville	Echo

ADJOINING 7.5 QUADRANGLES

ROAD CLASSIFICATION

Interstate Route	State Route
US Route	Local Road
Ramp	AWD
Interstate Route	US Route
	State Route

HARTBURG, TX-LA  
2012