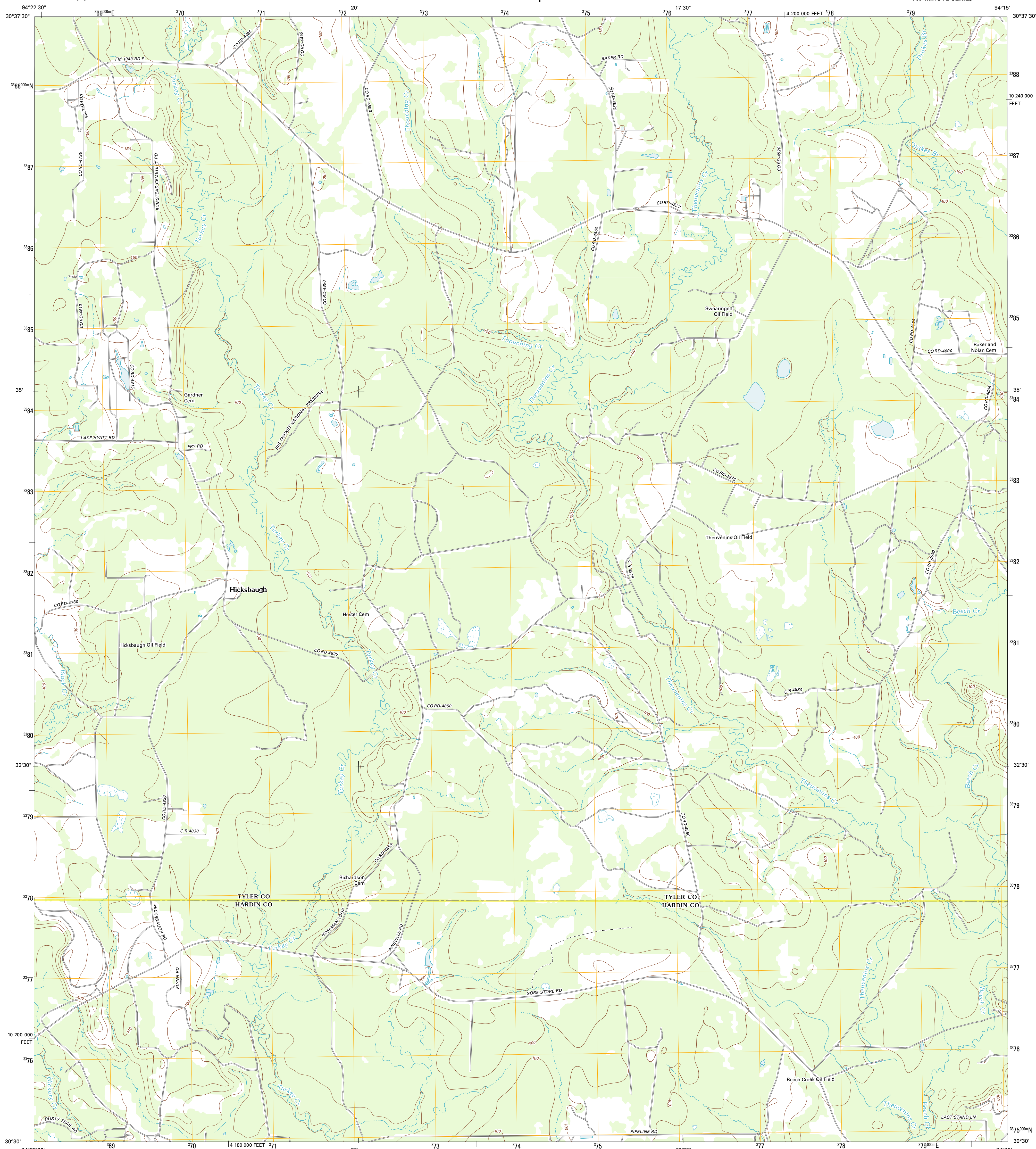




U.S. DEPARTMENT OF THE INTERIOR
U. S. GEOLOGICAL SURVEY

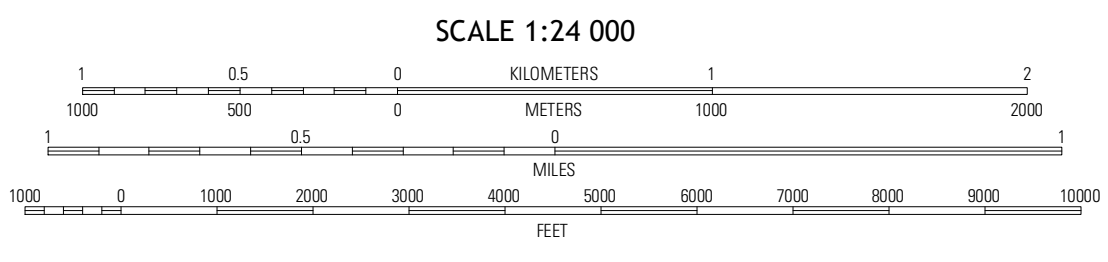
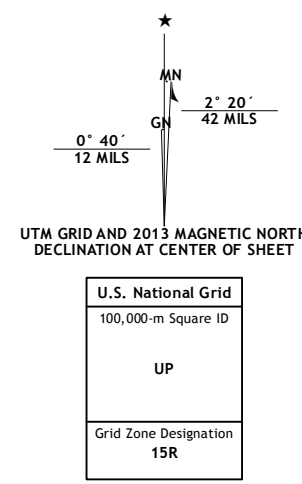


HICKSBAUGH QUADRANGLE
TEXAS
7.5-MINUTE SERIES



Produced by the United States Geological Survey
North American Datum of 1983 (NAD83)
World Geodetic System of 1984 (WGS84). Projection and
1 000-meter grid: Universal Transverse Mercator, Zone 15R
10 000-foot ticks: Texas Coordinate System of 1983 (central
zone)

Imagery.....NAP, April 2010 - May 2010
Roads.....©2006-2012 TomTom
Names.....©2012
Hydrography.....National Hydrography Dataset, 2010
Contours.....National Elevation Dataset, 2004
Boundaries.....Census, IBWC, IBC, USGS, 1972 - 2012



SCALE 1:24 000
CONTOUR INTERVAL 10 FEET
NORTH AMERICAN VERTICAL DATUM OF 1988
This map was produced to conform with the
National Geospatial Program US Topo Product Standard, 2011.
A metadata file associated with this product is draft version 0.6.7



QUADRANGLE LOCATION

Hilliker	Kirkpatrick Lake	Spurger
Warren	Hicksbaugh	Fred
Village Mills	Kountze North	Deserter Boyall

ROAD CLASSIFICATION

Interstate Route	State Route
US Route	Local Road
Ramp	4WD

HICKSBAUGH, TX
2013

ADJOINING 7.5 QUADRANGLES