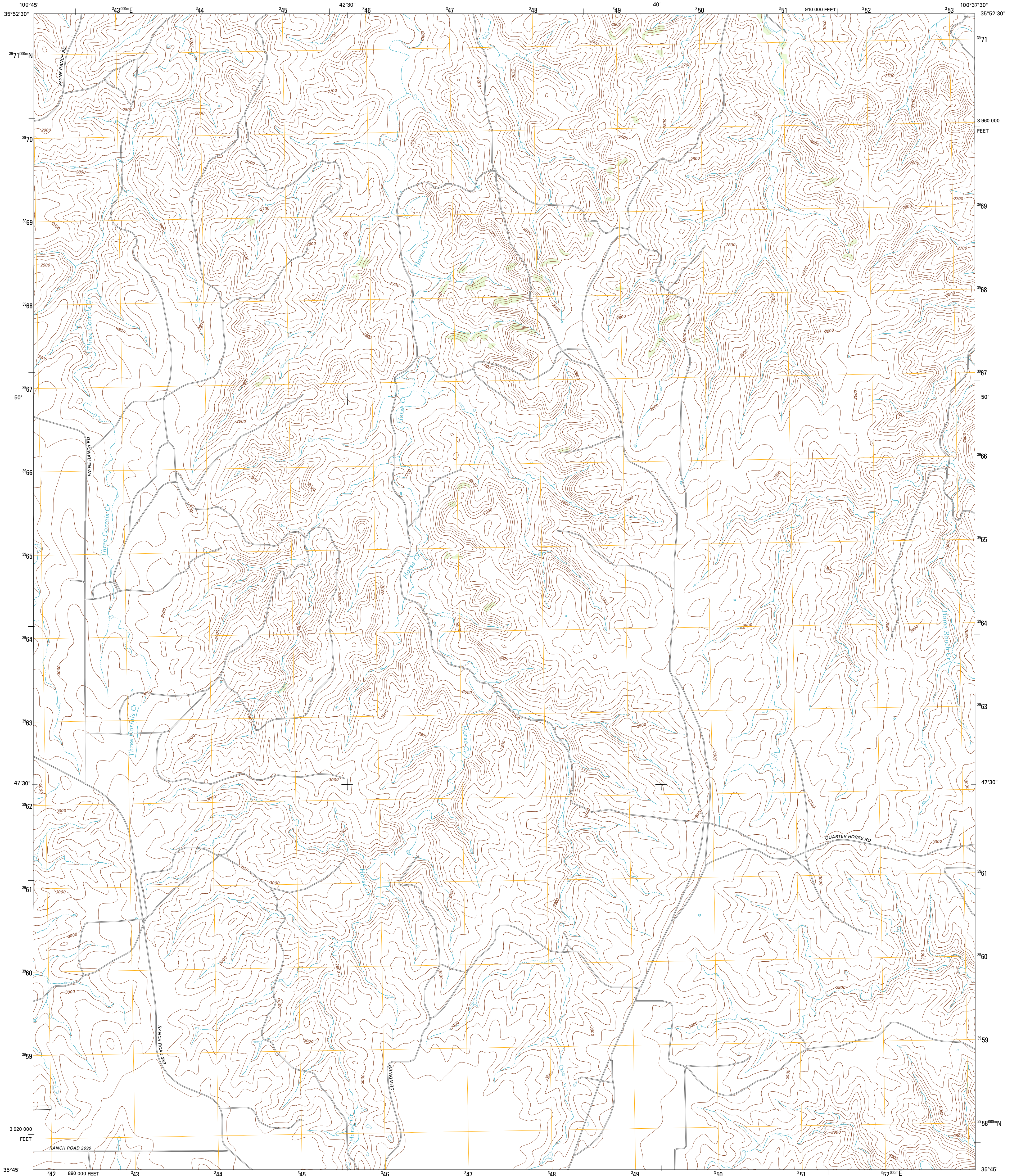




U.S. DEPARTMENT OF THE INTERIOR  
U. S. GEOLOGICAL SURVEY

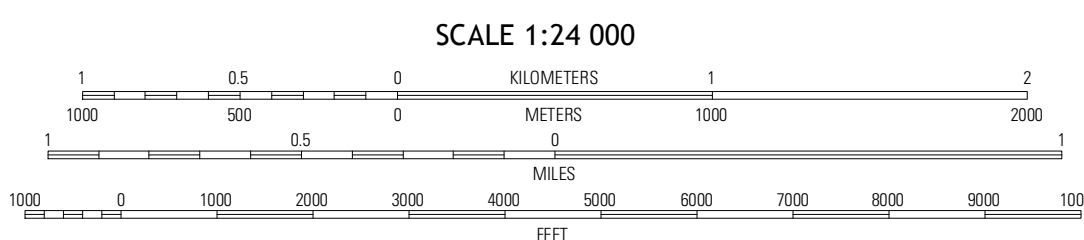
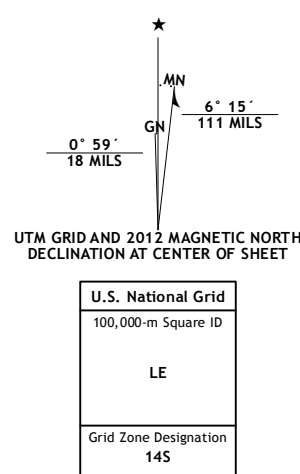


HORSE CREEK SOUTH QUADRANGLE  
TEXAS-ROBERTS CO.  
7.5-MINUTE SERIES



Produced by the United States Geological Survey  
Roads: National American Datum of 1983 (NAD83)  
World Geodetic System of 1984 (WGS84). Projection and  
1 000-meter grid: Universal Transverse Mercator, Zone 14S  
10 000-foot ticks: Texas Coordinate System of 1983 (north zone)

Imagery: NAIP, August 2010  
Roads: ©2006-2012 TomTom  
Names: GNS, 2012  
Hydrography: National Hydrography Dataset, 2010  
Contours: National Elevation Dataset, 2002  
Boundaries: Census, IBWC, IBC, USGS, 1972 - 2012



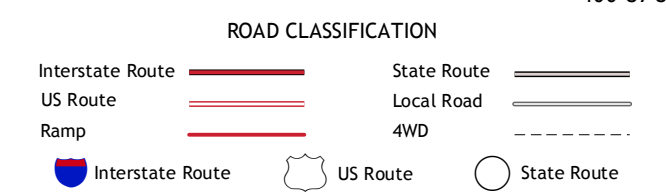
CONTOUR INTERVAL 20 FEET  
NORTH AMERICAN VERTICAL DATUM OF 1988

This map was produced to conform with the  
National Geospatial Program US Topo Product Standards, 2011.  
A metadata file associated with this product is draft version 0.6.7



QUADRANGLE LOCATION

Dry Creek NE	Horse Creek North	East Dry Creek
Dry Creek SE	Horse Creek South	Washburn Arroyo
Pampa NE	Miami	Lom



HORSE CREEK SOUTH, TX  
2012

ADJOINING 7.5 QUADRANGLES