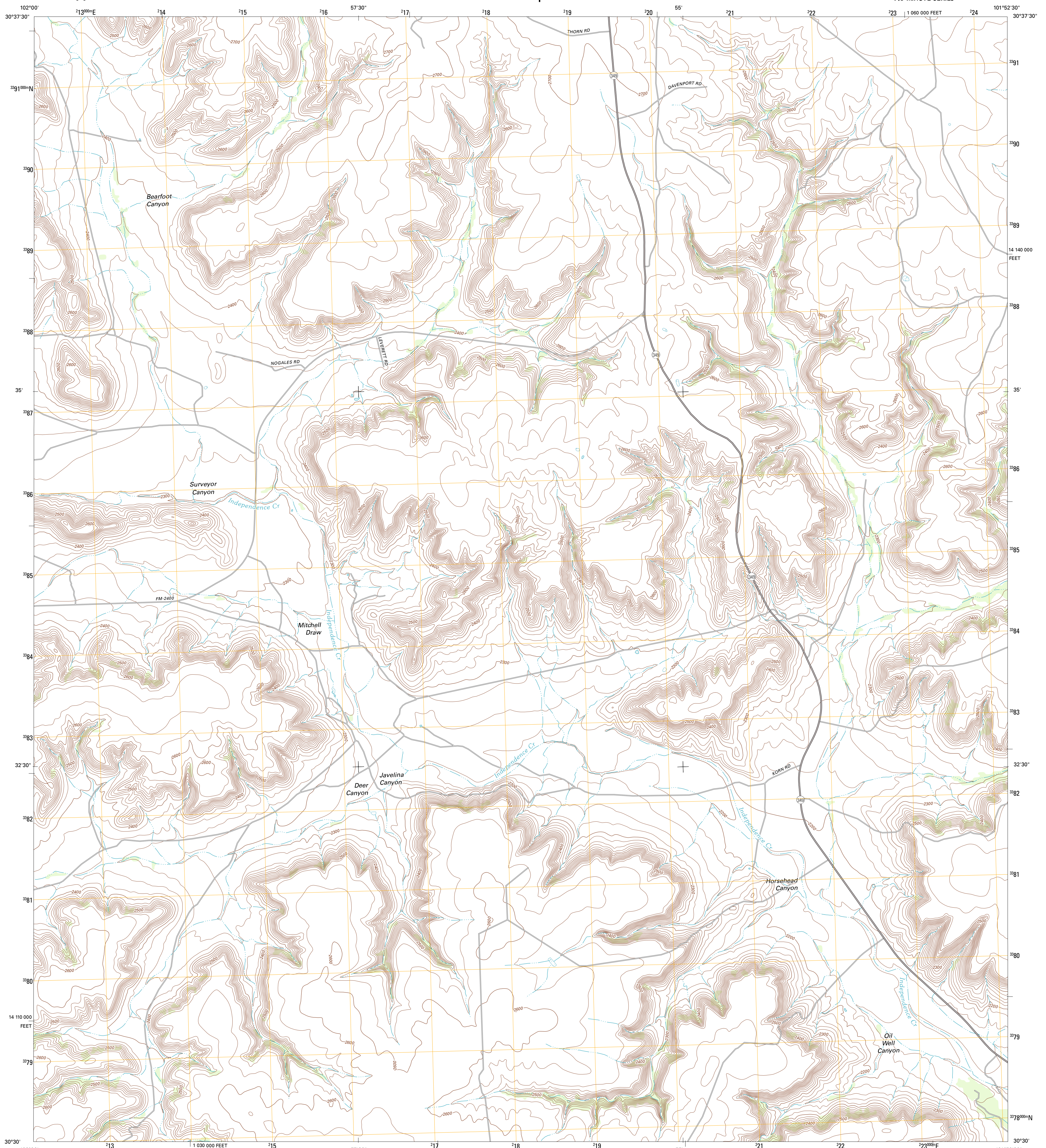




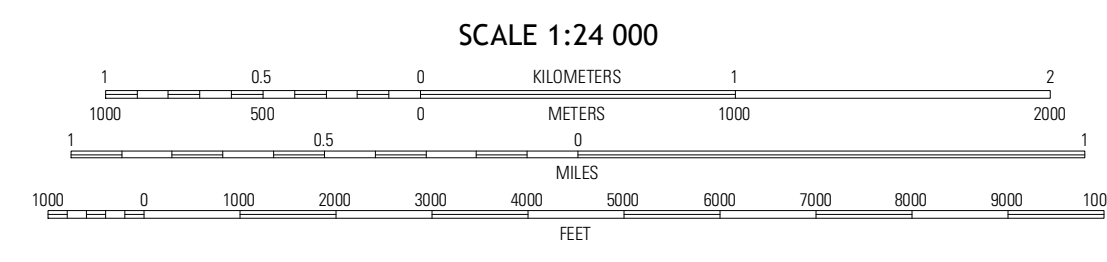
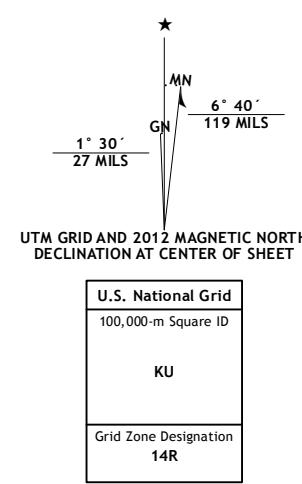
U.S. DEPARTMENT OF THE INTERIOR
U. S. GEOLOGICAL SURVEY



HORSEHEAD CANYON QUADRANGLE
TEXAS-TERRELL CO.
7.5-MINUTE SERIES



Produced by the United States Geological Survey
North American Datum of 1983 (NAD83)
World Geodetic System of 1984 (WGS84). Projection and
1 000-meter grid: Universal Transverse Mercator, Zone 14R
10 000-foot ticks: Texas Coordinate System of 1983 (south
central zone)



ROAD CLASSIFICATION

Interstate Route State Route

US Route Local Road

Ramp 4WD

Interstate Route US Route

QUADRANGLE LOCATION

| | | |
|----------------------|------------------|--------------|
| Smoky Mountain Ranch | Sheffield NW | Sheffield |
| Mitchell Draw | Horsehead Canyon | Sheffield SE |
| Circle Dot Ranch NE | Geddis Canyon NW | Oasis Ranch |

CONTOUR INTERVAL 20 FEET
NORTH AMERICAN VERTICAL DATUM OF 1988

This map was produced to conform with the
National Geospatial Program US Topo Product Standards, 2011.
A metadata file associated with this product is draft version 0.6.7

HORSEHEAD CANYON, TX
2012

ADJOINING 7.5 QUADRANGLES