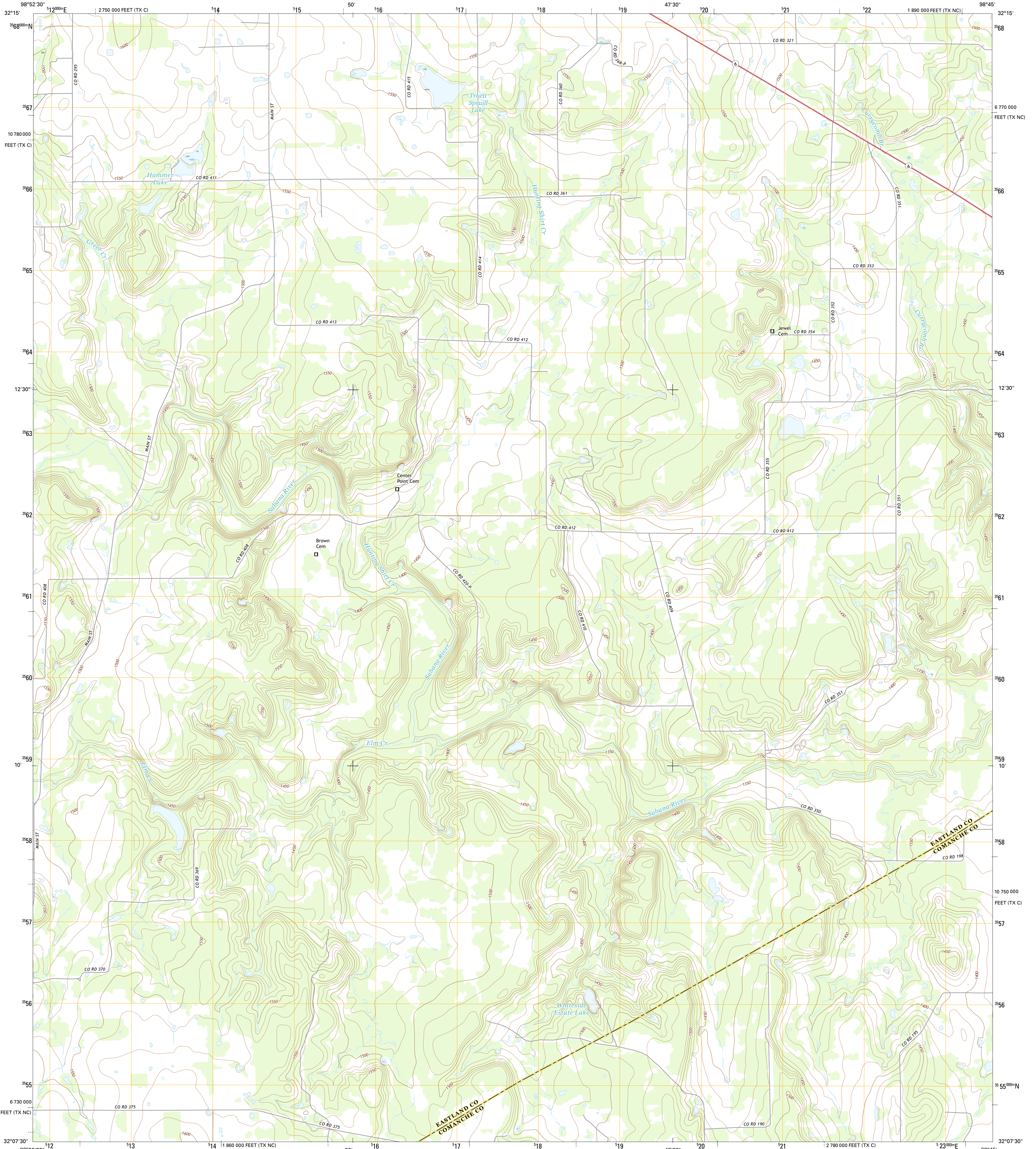




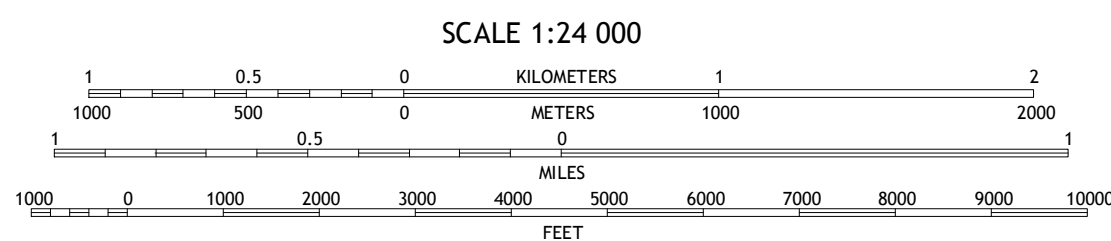
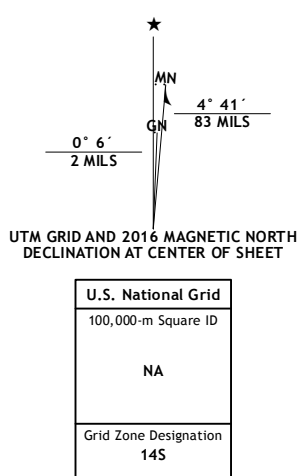
U.S. DEPARTMENT OF THE INTERIOR
U.S. GEOLOGICAL SURVEY



HUNTING SHIRT CREEK QUADRANGLE
TEXAS
7.5-MINUTE SERIES



Produced by the United States Geological Survey
 North American Datum of 1983 (NAD83)
 World Geodetic System of 1984 (WGS84). Projection and
 1 000-meter grid: Universal Transverse Mercator, Zone 14S
 10 000-foot ticks: Texas Coordinate System of 1983 (north
 central and central zones)
 This map is not a legal document. Boundaries may be
 generalized for this map scale. Private lands within government
 reservations may not be shown. Obtain permission before
 entering private lands.
 Imagery:.....NAIP, July 2014
 Roads:.....U.S. Census Bureau, 2014 - 2015
 Names:.....GNIS, 2015
 Hydrography:.....National Hydrography Dataset, 2014
 Contours:.....National Elevation Dataset, 2005
 Boundaries:.....Multiple sources; see metadata file 1972 - 2015
 Wetlands:.....FWS National Wetlands Inventory 1977 - 2014

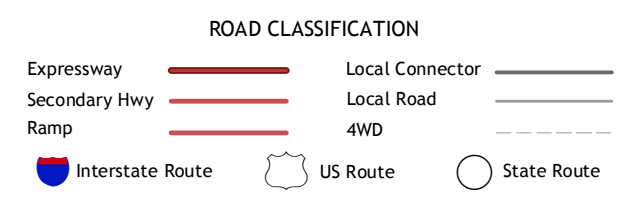


CONTOUR INTERVAL 10 FEET
NORTH AMERICAN VERTICAL DATUM OF 1988

This map was produced to conform with the
National Geospatial Program US Topo Product Standard, 2011.
A metadata file associated with this product is draft version 0.6.19



QUADRANGLE LOCATION



1	2	3	1 Cisco South
4	5	6	2 Carbon
6	7	8	3 Kokomo
			4 Union Center
			5 Gorman
			6 Rising Star
			7 Sipe Springs
			8 Duster

HUNTING SHIRT CREEK, TX
2016

