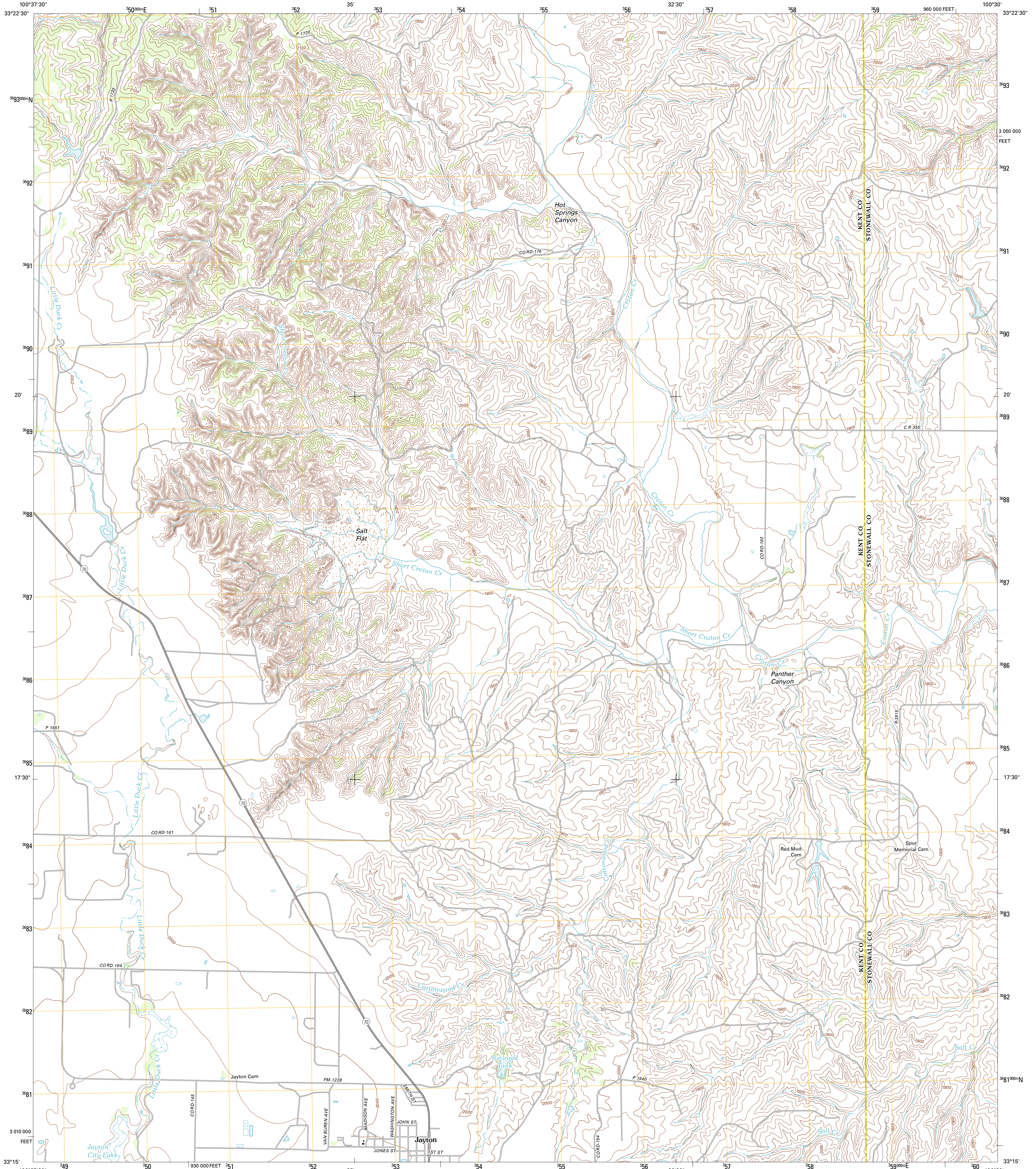




U.S. DEPARTMENT OF THE INTERIOR
U. S. GEOLOGICAL SURVEY



JAYTON NORTH QUADRANGLE
TEXAS
7.5-MINUTE SERIES

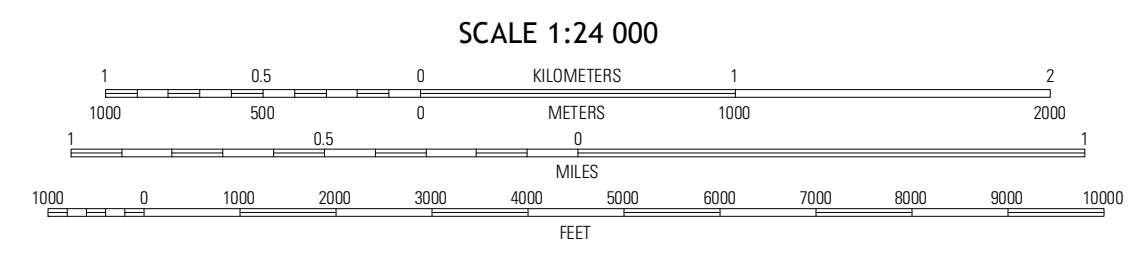


Produced by the United States Geological Survey
North American Datum of 1983 (NAD83)
World Geodetic System of 1984 (WGS84). Projection and
1 000-meter grid: Universal Transverse Mercator, Zone 14S
10 000-foot ticks: Texas Coordinate System of 1983 (north
central zone)

Imagery.....N.A.I.P., August 2010
Roads.....©2006-2012 TomTom
Names.....GIS, 2012
Hydrography.....National Hydrography Dataset, 2010
Contours.....National Elevation Dataset, 2010
Boundaries.....Census, IBC, USGS, 1972 - 2012

UTM GRID AND 2012 MAGNETIC NORTH
DECLINATION AT CENTER OF SHEET

U.S. National Grid 100,000 m Square ID
LB
Grid Zone Designation 14S



CONTOUR INTERVAL 20 FEET
NORTH AMERICAN VERTICAL DATUM OF 1988

This map was produced to conform with the
National Geospatial Program US Topo Product Standard, 2011.
A metadata file associated with this product is draft version 0.6.7



QUADRANGLE LOCATION

Gilpin	Purley House	Sutherland Canyon
Ginsel	Jayton North	Seven Diamond I. Canyon
Chalmers East	Jayton South	Poseock

ROAD CLASSIFICATION

Interstate Route	State Route
US Route	Local Road
Ramp	4WD

Interstate Route
 US Route
 State Route

JAYTON NORTH, TX
2012