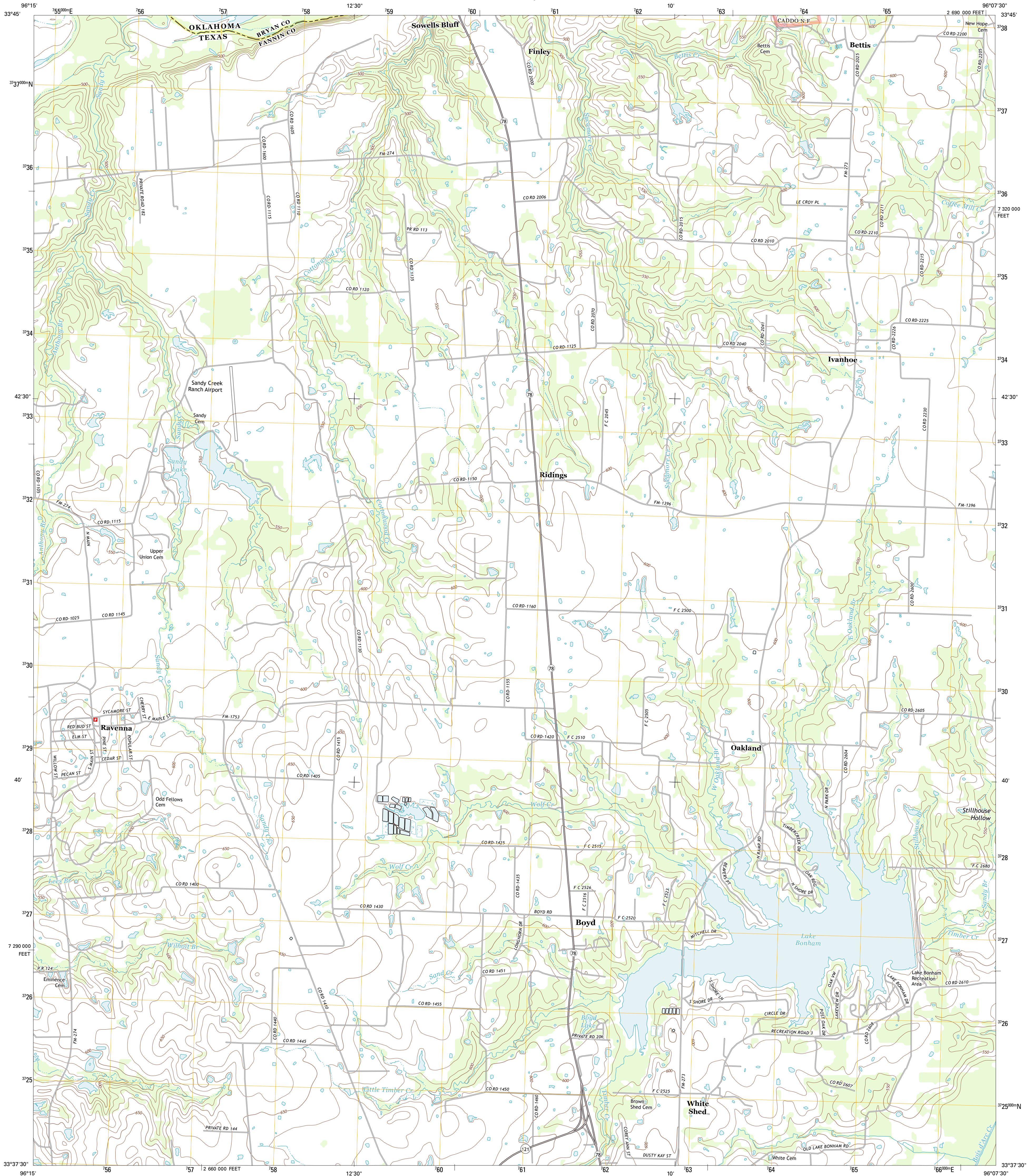




U.S. DEPARTMENT OF THE INTERIOR
U. S. GEOLOGICAL SURVEY

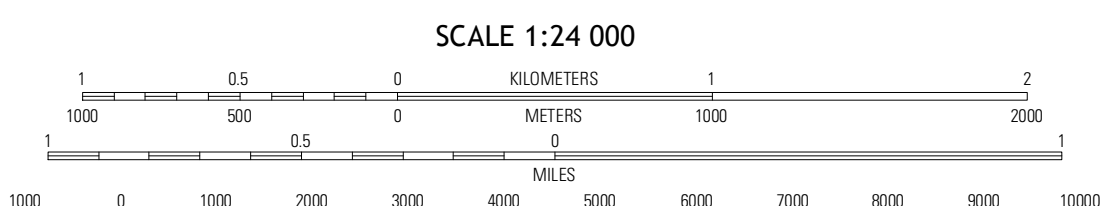
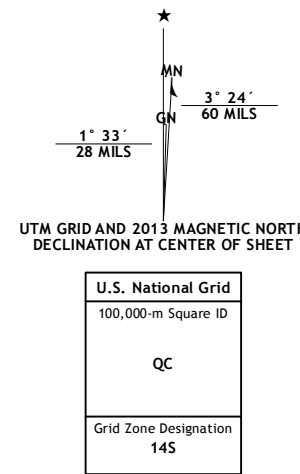


LAKE BONHAM QUADRANGLE
TEXAS-OKLAHOMA
7.5-MINUTE SERIES



Produced by the United States Geological Survey
North American Datum of 1983 (NAD83)
World Geodetic System of 1984 (WGS84). Projection and
1:000-meter grid: Universal Transverse Mercator, Zone 14S
110,000-foot ticks: Texas Coordinate System of 1983 (north
central zone), Oklahoma Coordinate System of 1983 (south
zone)

Imagery.....NAIP, August 2010
Roads.....©2006-2012 TomTom
Roads within US Forest Service Lands
with limited Forest Service updates, 2012
Names.....GNIS, 2012
Hydrography.....National Hydrography Dataset, 2010
Contours.....National Elevation Dataset, 2004
Boundaries.....Census, BWC, IBC, USGS, 1972-2012



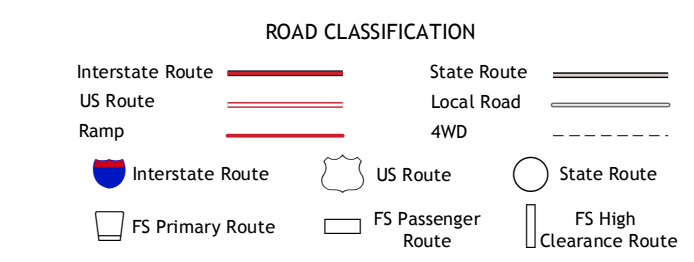
CONTOUR INTERVAL 10 FEET
NORTH AMERICAN VERTICAL DATUM OF 1988

This map was produced to conform with the
National Geospatial Program US Topo Product Standard, 2011.
A metadata file associated with this product is draft version 0.6.7



QUADRANGLE LOCATION

Kemp	Yuba	Telephone
Mulberry	Lake Bonham	Lamarco
Rector	Bonham	Dodd City



Check with local Forest Service unit
for current travel conditions and restrictions.

LAKE BONHAM, TX-OK
2013

ADJOINING 7.5 QUADRANGLES