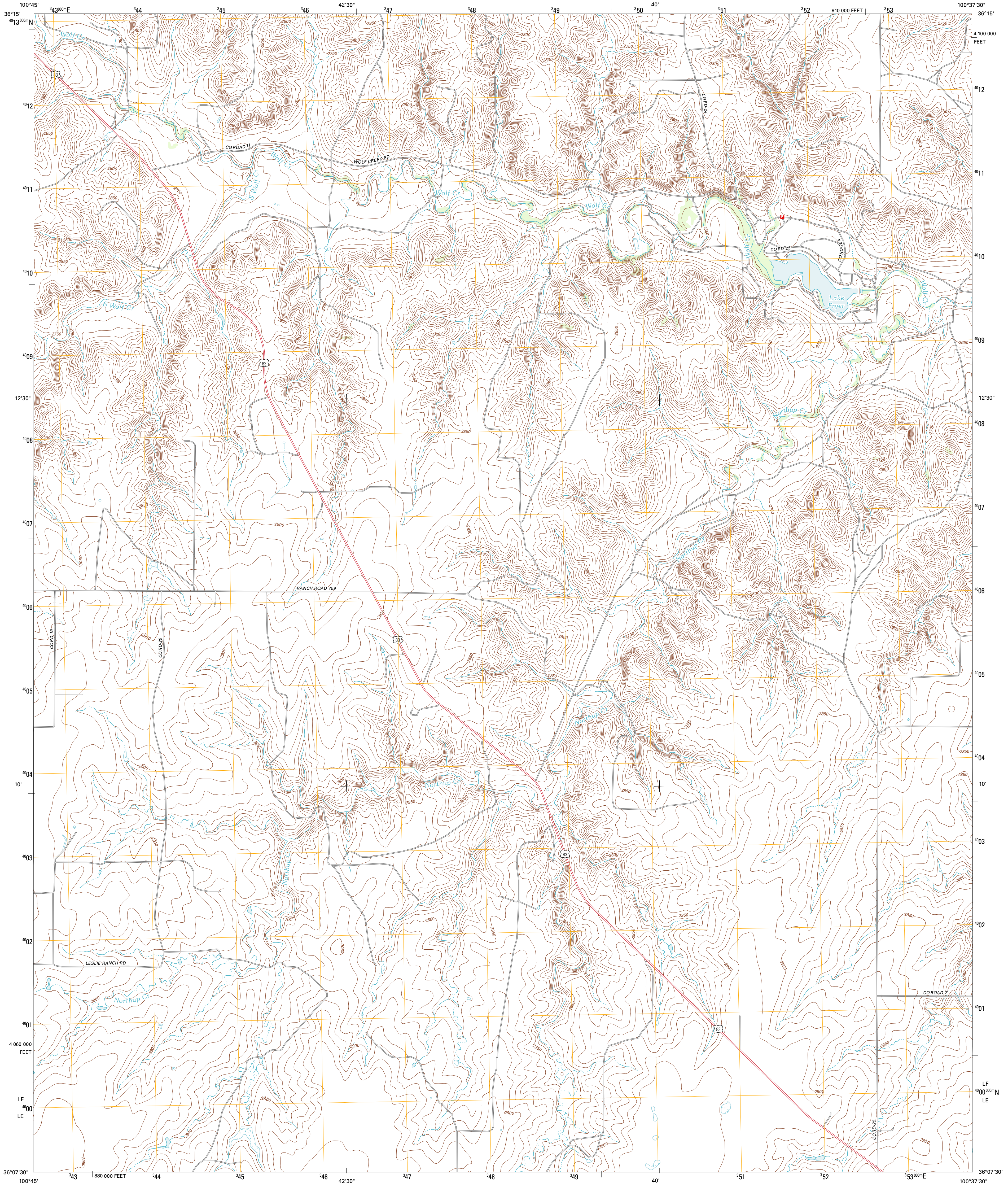




U.S. DEPARTMENT OF THE INTERIOR  
U. S. GEOLOGICAL SURVEY

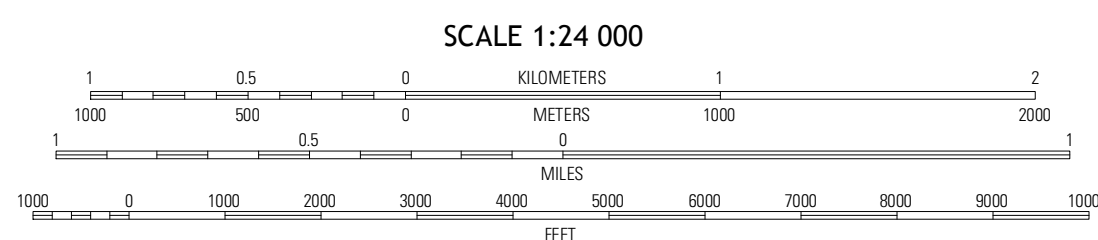
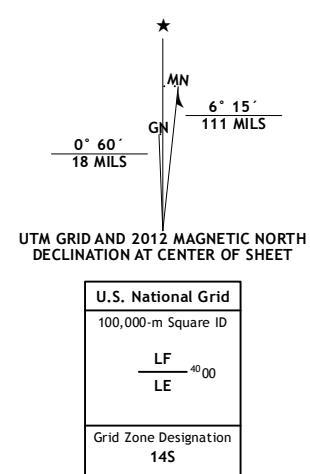


LAKE FRYER QUADRANGLE  
TEXAS-OCHELTREE CO.  
7.5-MINUTE SERIES



Produced by the United States Geological Survey  
North American Datum of 1983 (NAD83)  
World Geodetic System of 1984 (WGS84). Projection and  
1 000-meter grid: Universal Transverse Mercator, Zone 14S  
10 000-foot ticks: Texas Coordinate System of 1983 (north zone)

Imagery.....NAIP, August 2010  
Roads.....©2006-2012 TomTom  
Names.....GNS, 2012  
Hydrography.....National Hydrography Dataset, 2010  
Contours.....National Elevation Dataset, 2002  
Boundaries.....Census, IBWC, IBC, USGS, 1972 - 2012



CONTOUR INTERVAL 10 FEET  
NORTH AMERICAN VERTICAL DATUM OF 1988

This map was produced to conform with the  
National Geospatial Program US Topo Product Standard, 2011.  
A metadata file associated with this product is draft version 0.6.7



QUADRANGLE LOCATION

Perryton SE	Bosler SW	Bosler SE
Southrup Creek NE	Lake Fryer	Lake Fryer NE
Southrup Creek	Pickett Ranch Creek	Barton Creek

ROAD CLASSIFICATION

Interstate Route State Route

US Route Local Road

Ramp 4WD

Interstate Route US Route State Route

LAKE FRYER, TX  
2012

ADJOINING 7.5 QUADRANGLES