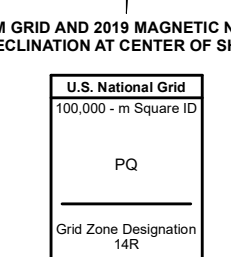
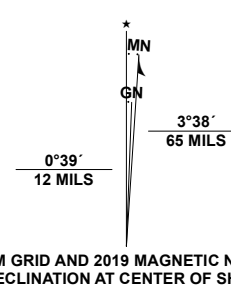


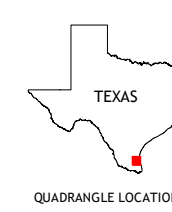
Produced by the United States Geological Survey

North American Datum of 1983 (NAD83) World Geodetic System of 1984 (WGS84). Projection and 1 000-meter grid: Universal Transverse Mercator, Zone 14R. This map is not a legal document. Boundaries may be generalized for this map scale. Private lands within government reservations may not be shown. Obtain permission before entering private lands.

Imagery: N.A.I.P., November 2016 - December 2016
Roads: U.S. Census Bureau, 2015
Names: GNS, 1979
Hydrography: National Hydrography Dataset, 2003 - 2018
Contours: National Elevation Dataset, 2009
Boundaries: Multiple sources; see metadata file 2019 - 2021
Wetlands: FWS National Wetlands Inventory Not Available



CONTOUR INTERVAL 5 FEET NORTH AMERICAN VERTICAL DATUM OF 1988 This map was produced to conform with the National Geospatial Program US Topo Product Standard.



ADJOINING QUADRANGLES

| | | |
|---|---|---|
| 1 | 2 | 3 |
| 4 | 5 | 6 |
| 7 | 8 | |

1 San Pedro Ranch
2 Maria Estrella Well
3 Potrero Lopeno NW
4 Sallitillo Well
5 Potrero Lopeno SW
6 Rosita Lake
7 Rosita Lake NE
8 South of Potrero Lopeno NW

ROAD CLASSIFICATION

| | |
|------------------|-----------------|
| Expressway | Local Connector |
| Secondary Hwy | Local Road |
| Ramp | 4WD |
| Interstate Route | US Route |
| | State Route |

