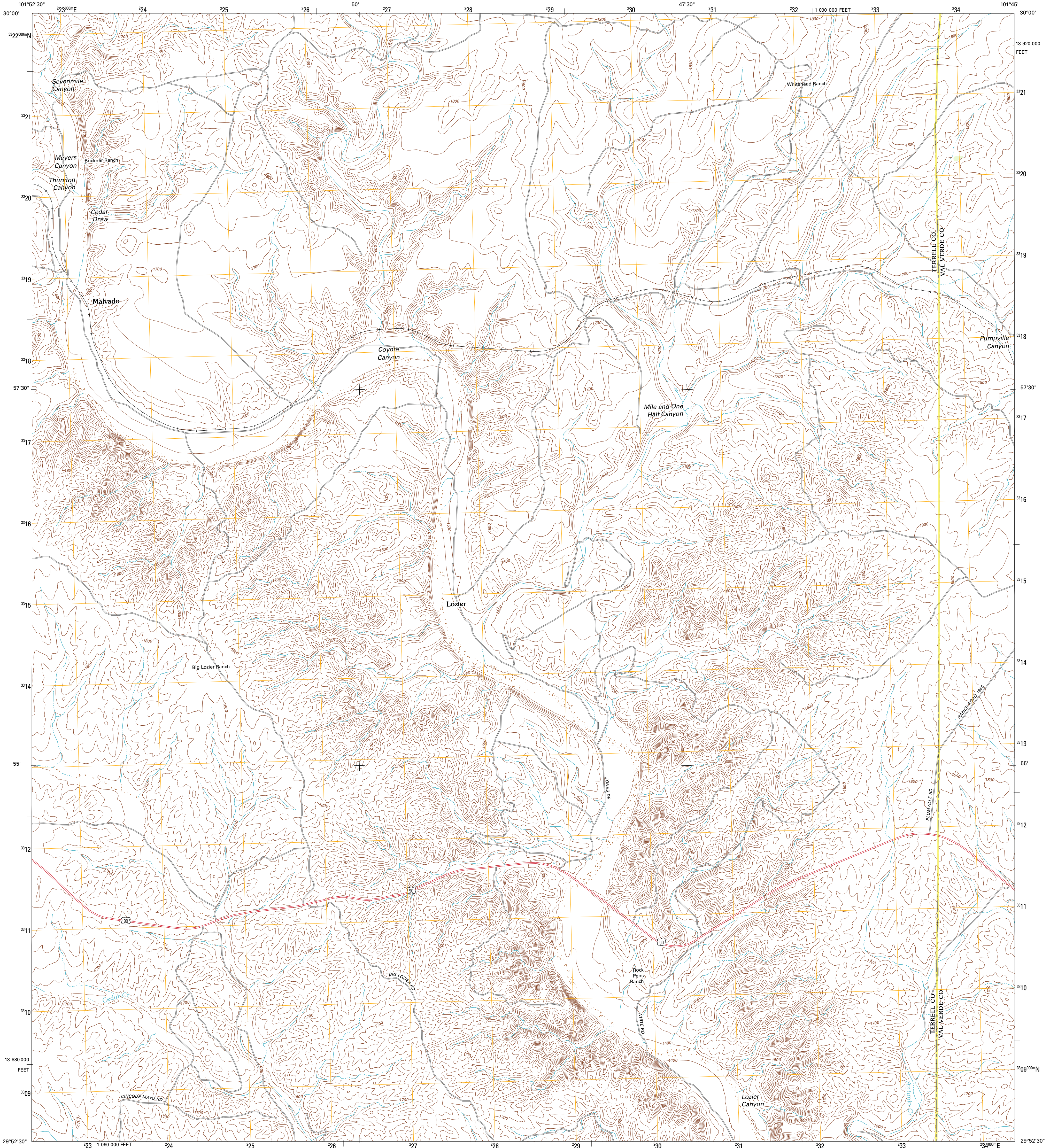




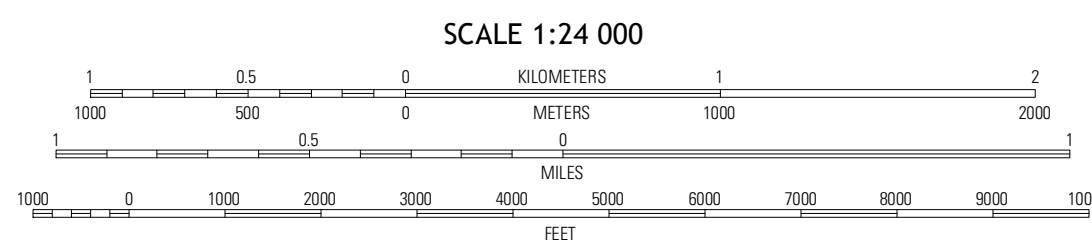
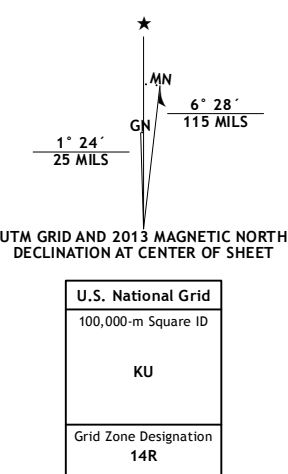
U.S. DEPARTMENT OF THE INTERIOR
U. S. GEOLOGICAL SURVEY



LOZIER CANYON NORTH QUADRANGLE
TEXAS
7.5-MINUTE SERIES



Produced by the United States Geological Survey
North American Datum of 1983 (NAD83)
World Geodetic System of 1984 (WGS84), Projection and
1 000-meter grid: Universal Transverse Mercator, Zone 14R
10 000-foot ticks: Texas Coordinate System of 1983 (south
central zone)



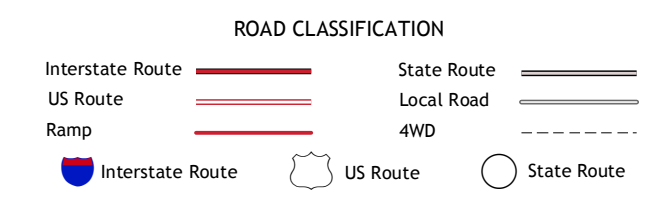
CONTOUR INTERVAL 20 FEET
NORTH AMERICAN VERTICAL DATUM OF 1988

This map was produced to conform with the
National Geospatial Program US Topo Product Standard, 2011.
A metadata file associated with this product is draft version 0.6.7



QUADRANGLE LOCATION

Meyers Canyon	Sevenmile Canyon	Bainhill Ranch
Cook Creek North	Lozier Canyon North	Pumpville
Cook Creek South	Lozier Canyon South	Ramsay Canyon



LOZIER CANYON NORTH, TX
2013