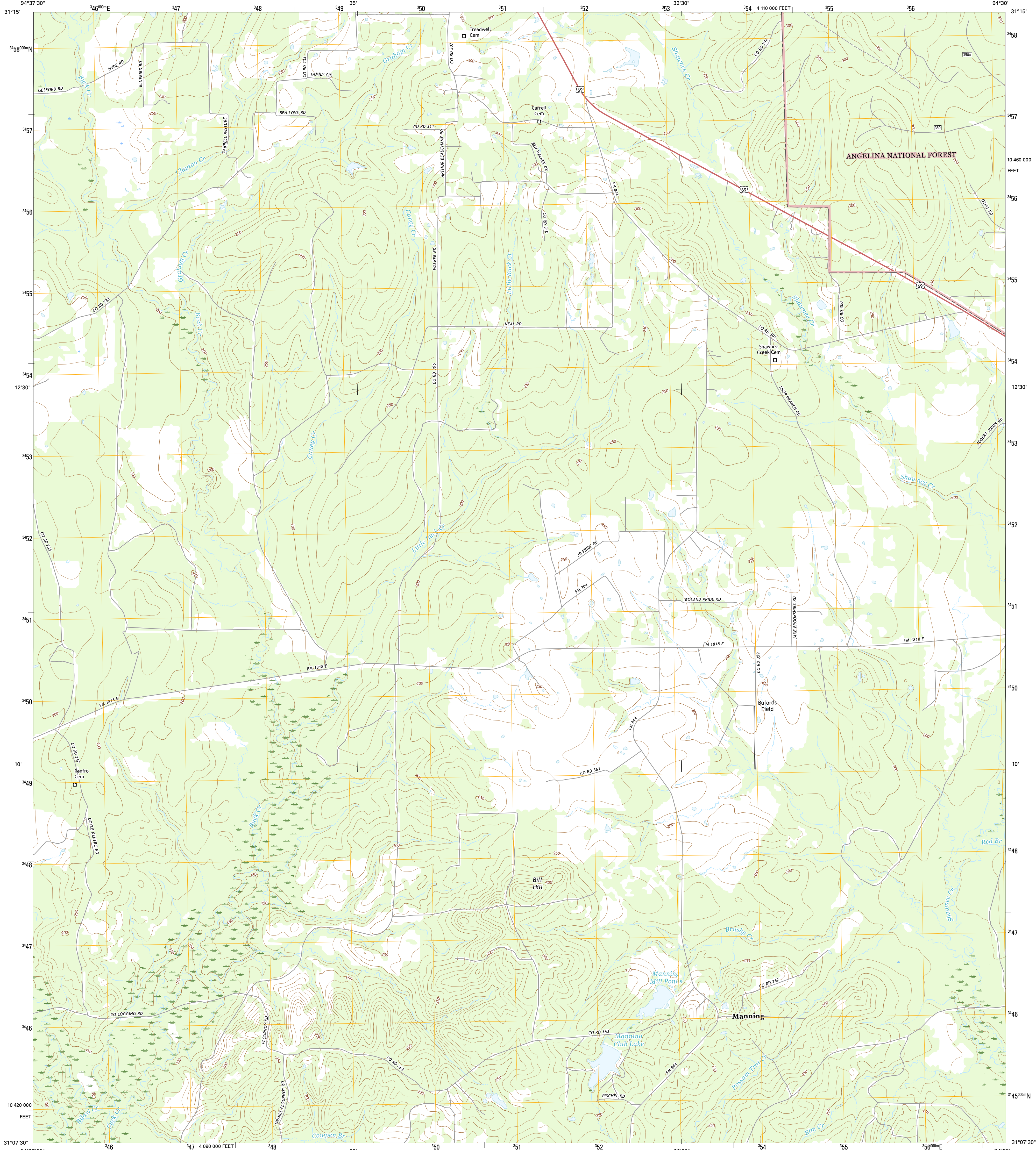




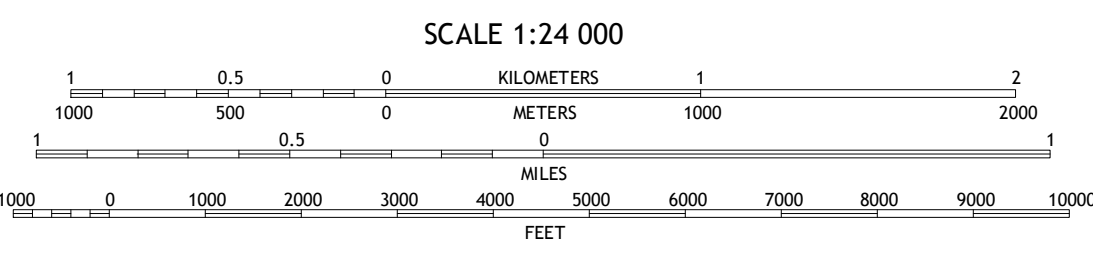
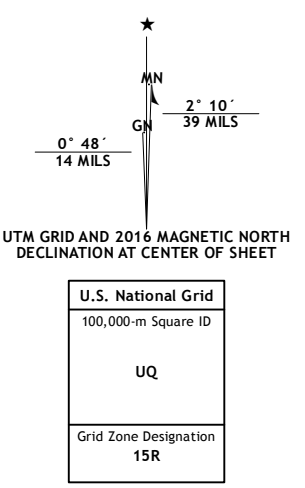
U.S. DEPARTMENT OF THE INTERIOR  
U.S. GEOLOGICAL SURVEY



MANNING QUADRANGLE  
TEXAS-ANGELINA CO.  
7.5-MINUTE SERIES



**Produced by the United States Geological Survey**  
 North American Datum of 1983 (NAD83)  
 World Geodetic System of 1984 (WGS84), Projection and  
 1 000-meter grid: Universal Transverse Mercator, Zone 15R  
 10 000-foot ticks: Texas Coordinate System of 1983 (central  
 zone)  
 This map is not a legal document. Boundaries may be  
 generalized for this map scale. Private lands within government  
 reservations may not be shown. Obtain permission before  
 entering private lands.  
 Imagery.....NADIP, October 2014  
 Roads.....U.S. Census Bureau, 2014 - 2015  
 Roads within US Forest Service Lands.....FSTopo Data  
 with limited Forest Service updates, 2012 - 2015  
 Names.....GNIS, 2015  
 Hydrography.....National Hydrography Dataset, 2014  
 Contours.....National Elevation Dataset, 2003  
 Boundaries.....Multiple sources; see metadata file 1972 - 2015  
 Wetlands.....FWS National Wetlands Inventory 1977 - 2014



**ROAD CLASSIFICATION**

Expressway	Local Connector
Secondary Hwy	Local Road
Ramp	4WD
Interstate Route	US Route
FS Primary Route	FS Passenger Route
	FS High Route
	Clearance Route
	State Route

Check with local Forest Service unit  
for current travel conditions and restrictions.

ADJOINING QUADRANGLES

1	2	3
4	5	6
7	8	

1 Lufkin  
2 Huntington  
3 Etowah South  
4 Bald Hill  
5 Zavalla  
6 Pluck  
7 Wolf Hill  
8 Rockland

CONTOUR INTERVAL 10 FEET  
 NORTH AMERICAN VERTICAL DATUM OF 1988  
 This map was produced to conform with the  
 National Geospatial Program US Topo Product Standard, 2011.  
 A metadata file associated with this product is draft version 0.6.19

MANNING, TX  
2016

