

Produced by the United States Geological Survey

North American Datum of 1983 (NAD83) World Geodetic System of 1984 (WGS84) Projection and 1 000-meter grid/Universal Transverse Mercator, Zone 14S

This map is not a legal document. Boundaries may be generalized for this map scale. Private lands within government reservations may not be shown. Obtain permission before entering private lands.

Imagery: NAIP, September 2016 - November 2016; U.S. Census Bureau, 2015 - 2018; Names: GNS, 1979 - 2022; Hydrography: National Hydrography Dataset, 2000 - 2018; Contours: National Elevation Dataset, 2021; Boundaries: Multiple sources; see metadata file 2019 - 2021; Wetlands: FWS National Wetlands Inventory Not Available

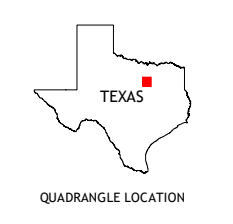
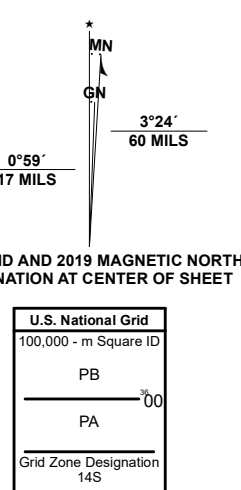


Table with 3 columns and 3 rows showing adjacent quadrangles: 1 Fort Worth, 2 Kennedale, 3 Arlington, 4 Britton, 5 Britton, 6 Keene, 7 Alvarado, 8 Venus

