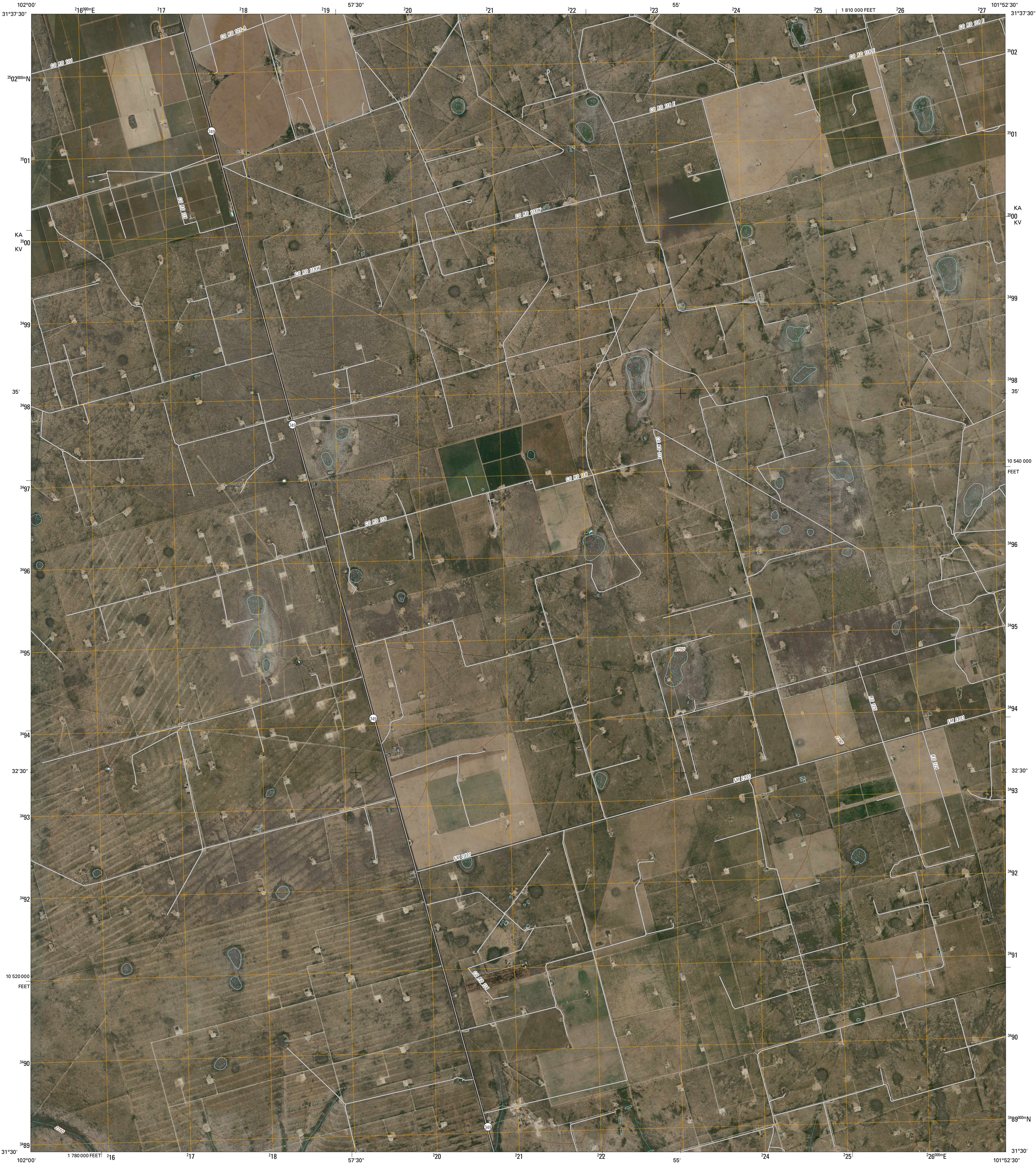




U.S. DEPARTMENT OF THE INTERIOR
U. S. GEOLOGICAL SURVEY

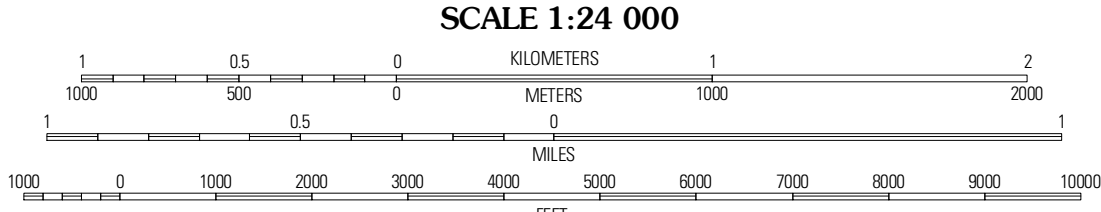
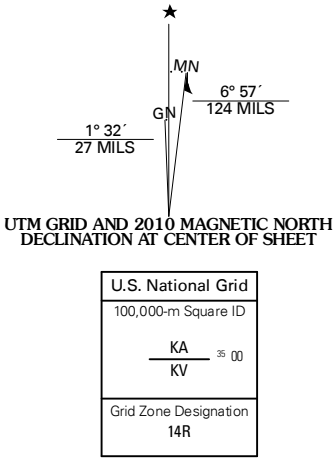


MIDKIFF SW QUADRANGLE
TEXAS
7.5-MINUTE SERIES



Produced by the United States Geological Survey
North American Datum of 1983 (NAD83)
World Geodetic System of 1984 (WGS84). Projection and
1 000-meter grid: Universal Transverse Mercator, Zone 14R
10 000-foot ticks: Texas Coordinate System of 1983
(central zone)

Imagery.....NAP, September 2008
Roads.....US Census Bureau TIGER data
with limited USGS updates, 2008
Names.....GNIS, 2008
Hydrography.....National Hydrography Dataset, 1995
Contours.....National Elevation Dataset, 2007



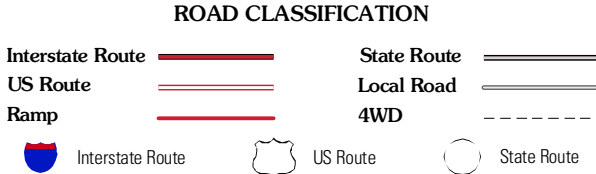
CONTOUR INTERVAL 10 FEET

This map was produced to conform with version 0.5.10 of the
draft USGS Standards for 7.5-Minute Quadrangle Maps.
A metadata file associated with this product is also draft version 0.5.10



| QUADRANGLE LOCATION | | |
|---------------------|---------------|----------------------|
| Benge Corner | Midkiff NW | Midkiff |
| Benge Corner SE | Midkiff SW | Midkiff SE |
| Hanks Ranch | Lindsey Ranch | Sevensmile Corner NE |

ADJOINING 7.5' QUADRANGLES
TX 31101-322



MIDKIFF SW, TX
2010