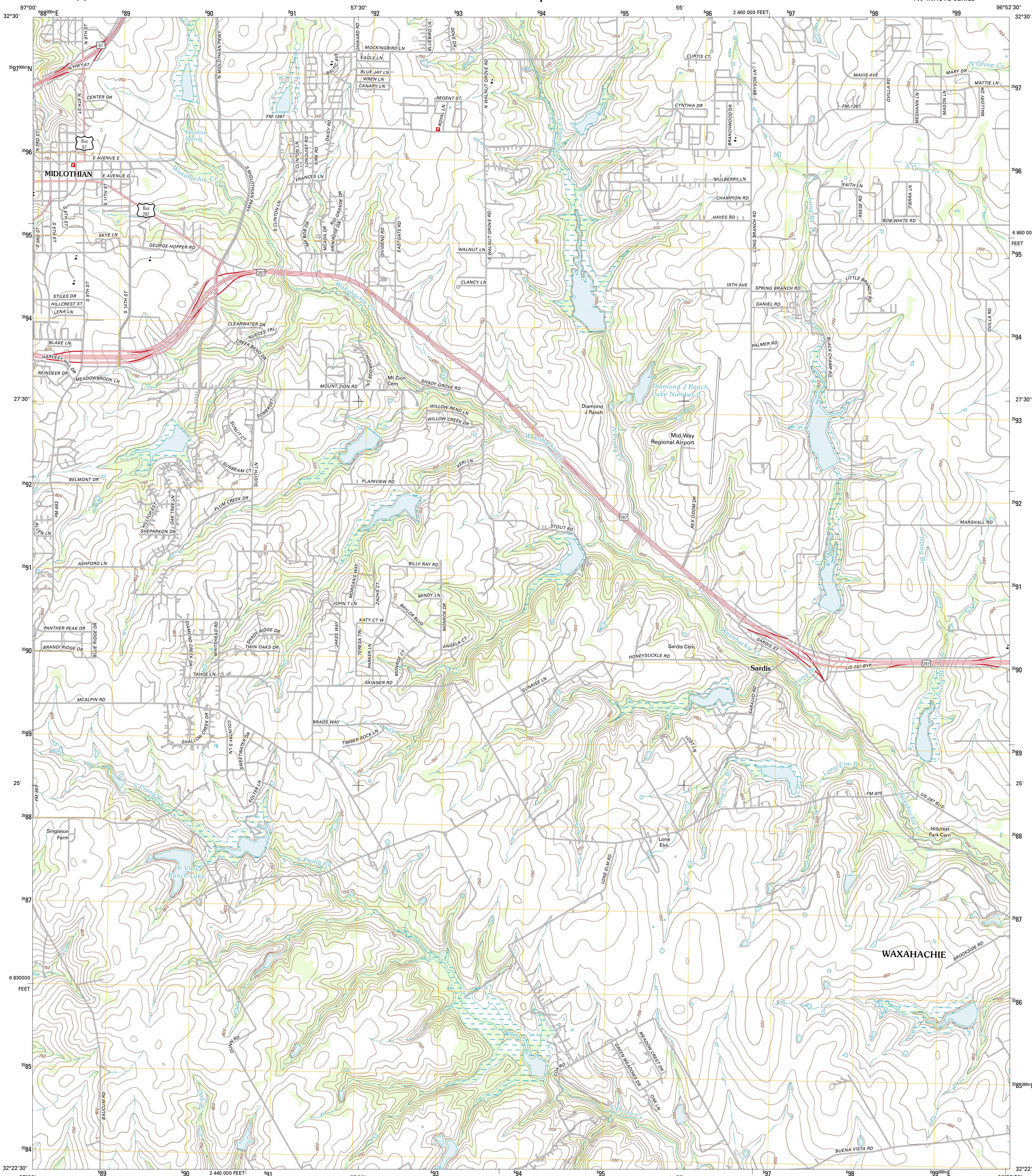




U.S. DEPARTMENT OF THE INTERIOR  
U. S. GEOLOGICAL SURVEY

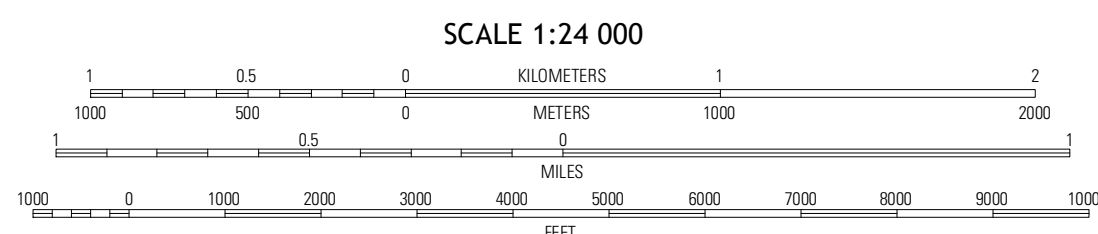
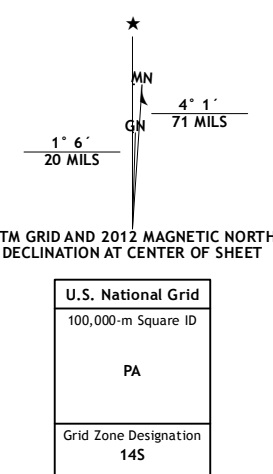


MIDLOTHIAN QUADRANGLE  
TEXAS-ELLIS CO.  
7.5-MINUTE SERIES



Produced by the United States Geological Survey  
North American Datum of 1983 (NAD83)  
World Geodetic System of 1984 (WGS84). Projection and  
1:000-meter grid: Universal Transverse Mercator, Zone 14S  
10 000-foot ticks: Texas Coordinate System of 1983 (north  
central zone)

Imagery.....NAIP, August 2010  
Roads.....©2006-2012 TomTom  
Names.....GNIS, 2012  
Hydrography.....National Hydrography Dataset, 2010  
Contours.....National Elevation Dataset, 2004  
Boundaries.....Census, IBWC, IBC, USGS, 1972 - 2012

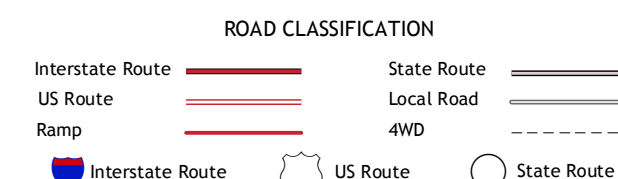


CONTOUR INTERVAL 10 FEET  
NORTH AMERICAN VERTICAL DATUM OF 1988  
This map was produced to conform with the  
National Geospatial Program US Topo Product Standards, 2011.  
A metadata file associated with this product is draft version 0.6.7



QUADRANGLE LOCATION

Britton	Cedar Hill	Lancaster
Venus	Midlothian	Waxahachie
Maypearl	Box	Furreston



MIDLOTHIAN, TX  
2012

ADJOINING 7.5 QUADRANGLES