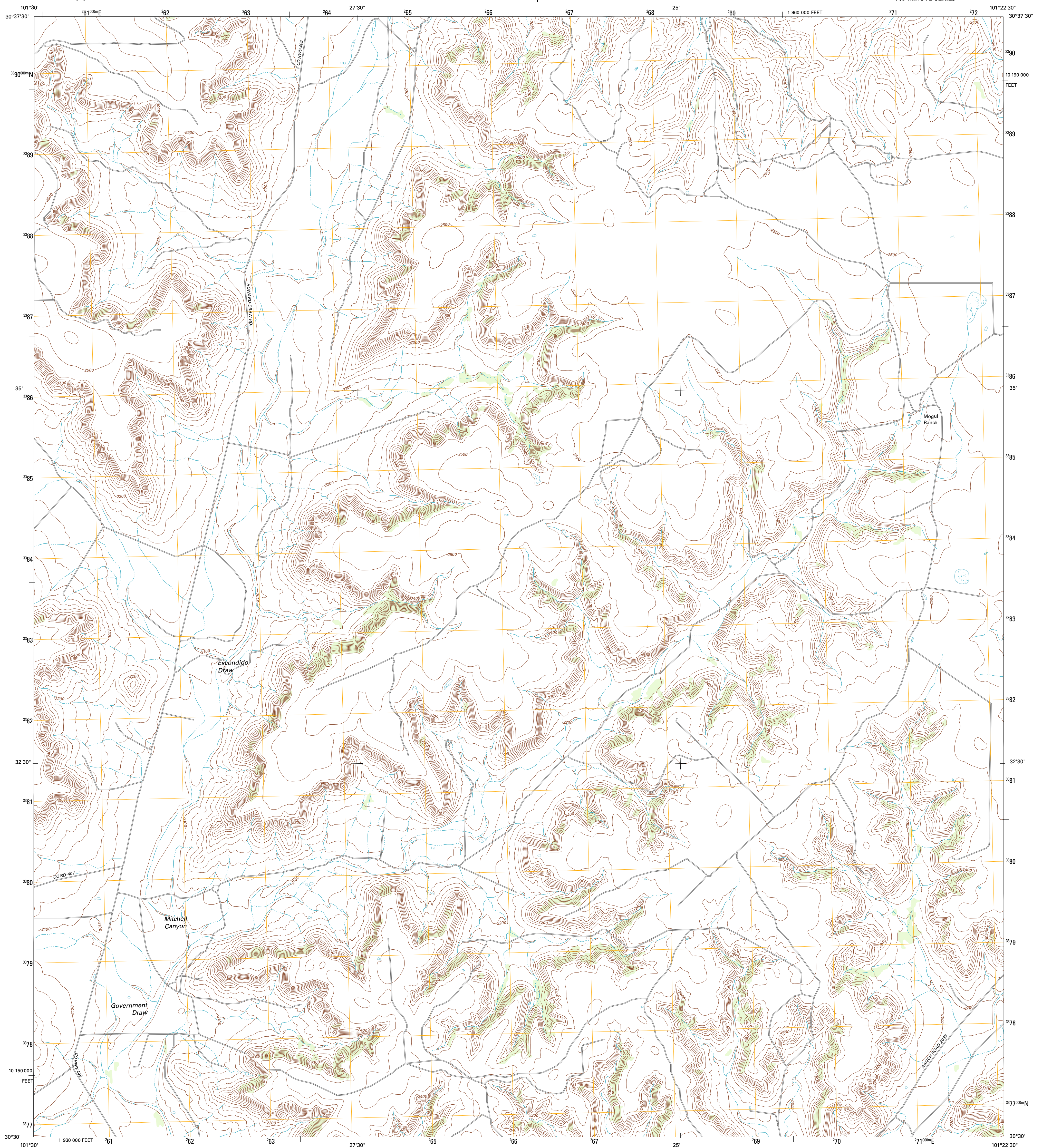




U.S. DEPARTMENT OF THE INTERIOR
U. S. GEOLOGICAL SURVEY

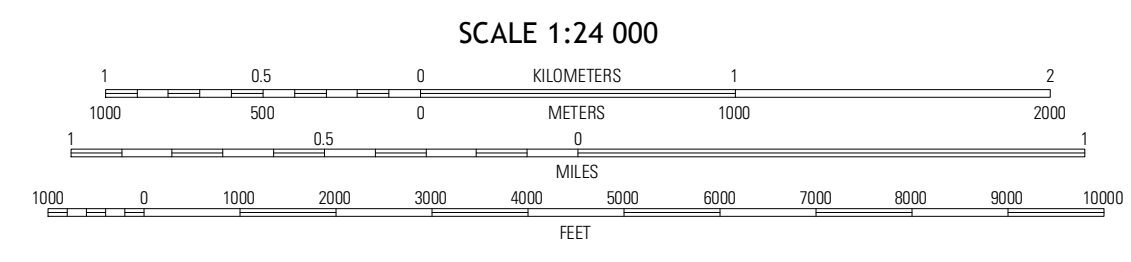
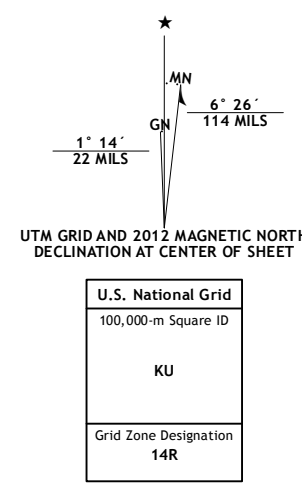


MITCHELL CANYON QUADRANGLE
TEXAS-CROCKETT CO.
7.5-MINUTE SERIES



Produced by the United States Geological Survey
North American Datum of 1983 (NAD83)
World Geodetic System of 1984 (WGS84). Projection and
1 000-meter grid: Universal Transverse Mercator, Zone 14R
10 000-foot ticks: Texas Coordinate System of 1983 (central
zone)

Imagery.....NAIP, May 2010
Roads.....©2006-2012 TomTom
Names.....GNIS, 2012
Hydrography.....National Hydrography Dataset, 2010
Contours.....National Elevation Dataset, 2006
Boundaries.....Census, IBWC, IBC, USGS, 1972-2012



SCALE 1:24 000
CONTOUR INTERVAL 20 FEET
NORTH AMERICAN VERTICAL DATUM OF 1988
This map was produced to conform with the
National Geospatial Program US Topo Product Standards, 2011.
A metadata file associated with this product is draft version 0.6.7



QUADRANGLE LOCATION

Bashlar Hill	Pike Peak	Mitchell Canyon NE
Burnt Canyon	Mitchell Canyon	Hunt Ranch
Priest Albert Draw	Howards Well	Howards Well NE

ROAD CLASSIFICATION
Interstate Route (thick red line)
US Route (red line)
Ramp (red line with arrow)
State Route (grey line)
Local Road (dashed grey line)
4WD (dashed line with cross-ticks)

MITCHELL CANYON, TX
2012

ADJOINING 7.5 QUADRANGLES