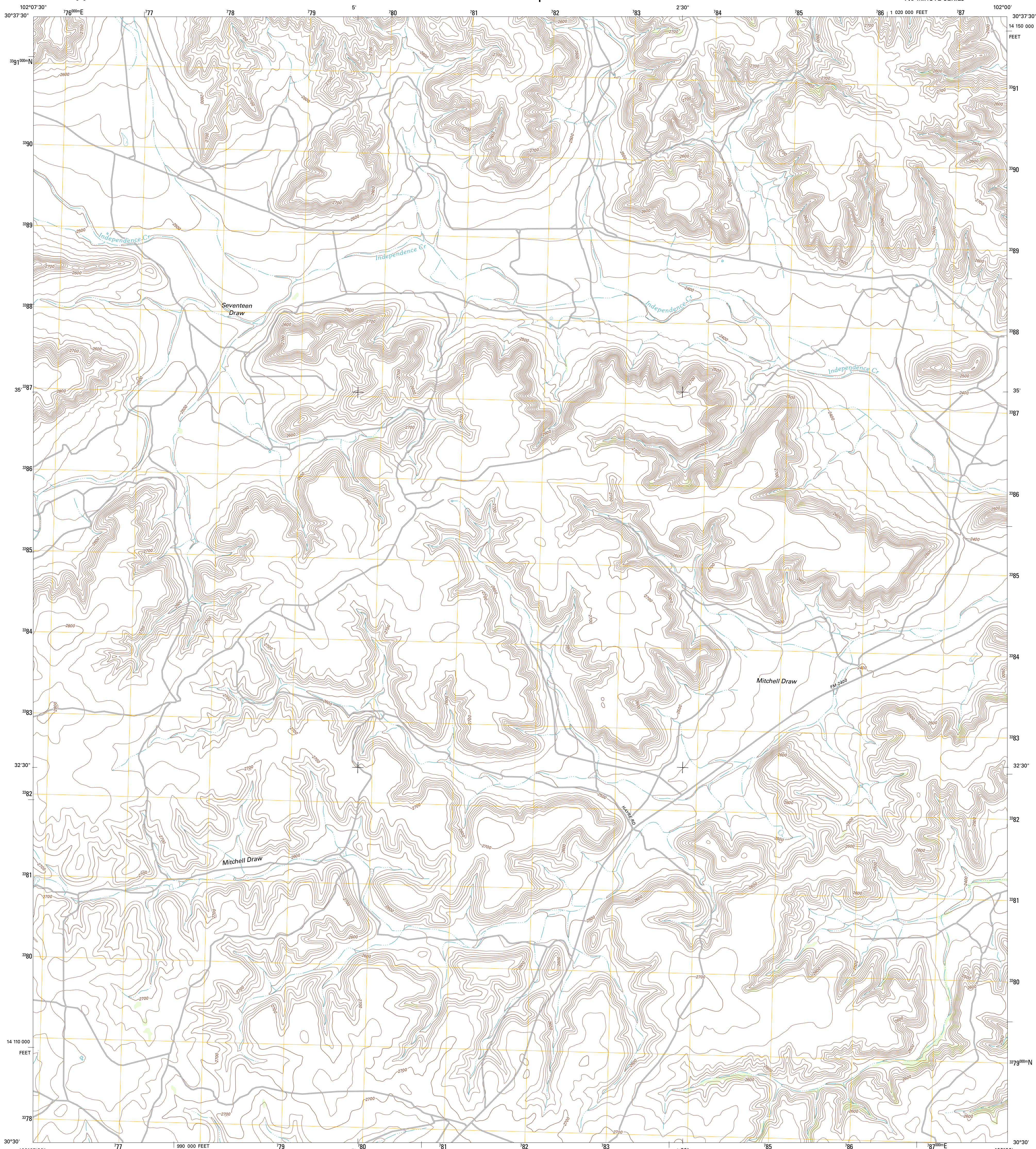




U.S. DEPARTMENT OF THE INTERIOR  
U. S. GEOLOGICAL SURVEY

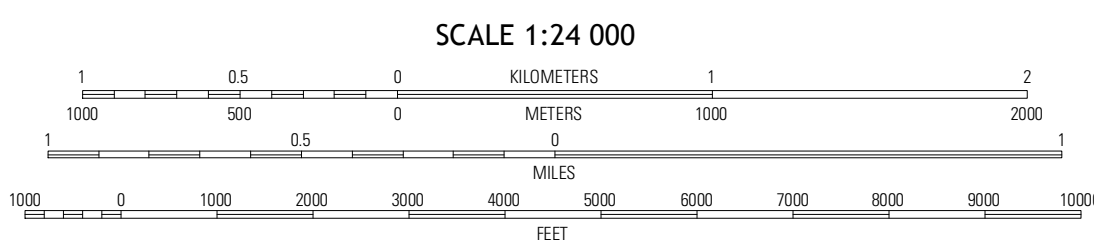
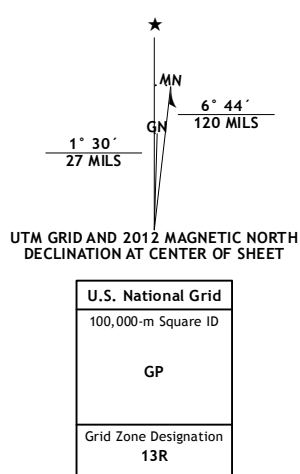


MITCHELL DRAW QUADRANGLE  
TEXAS-TERRELL CO.  
7.5-MINUTE SERIES



Produced by the United States Geological Survey  
North American Datum of 1983 (NAD83)  
World Geodetic System of 1984 (WGS84). Projection and  
1 000-meter grid: Universal Transverse Mercator, Zone 13R  
10 000-foot ticks: Texas Coordinate System of 1983 (south  
central zone)

Imagery.....NAP, August 2010 - September 2010  
Roads.....©2006-2012 TomTom  
Names.....GNIS, 2012  
Hydrography.....National Hydrography Dataset, 2010  
Contours.....National Elevation Dataset, 2006  
Boundaries.....Census, IBWC, IBC, USGS, 1972 - 2012



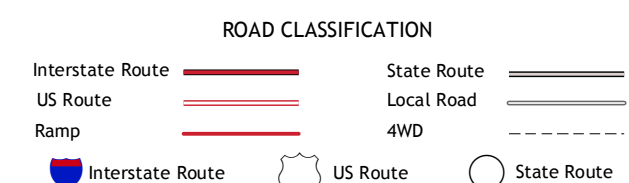
CONTOUR INTERVAL 20 FEET  
NORTH AMERICAN VERTICAL DATUM OF 1988

This map was produced to conform with the  
National Geospatial Program US Topo Product Standards, 2011.  
A metadata file associated with this product is draft version 0.6.7



QUADRANGLE LOCATION

Mat-A Ranch	Smoky Mountain Ranch	Sheffield NW
Seventeen Ranch	Mitchell Draw	Horseshoe Canyon
Circle Dot Ranch	Circle Dot Ranch NE	Geddis Canyon NW



MITCHELL DRAW, TX  
2012

ADJOINING 7.5 QUADRANGLES