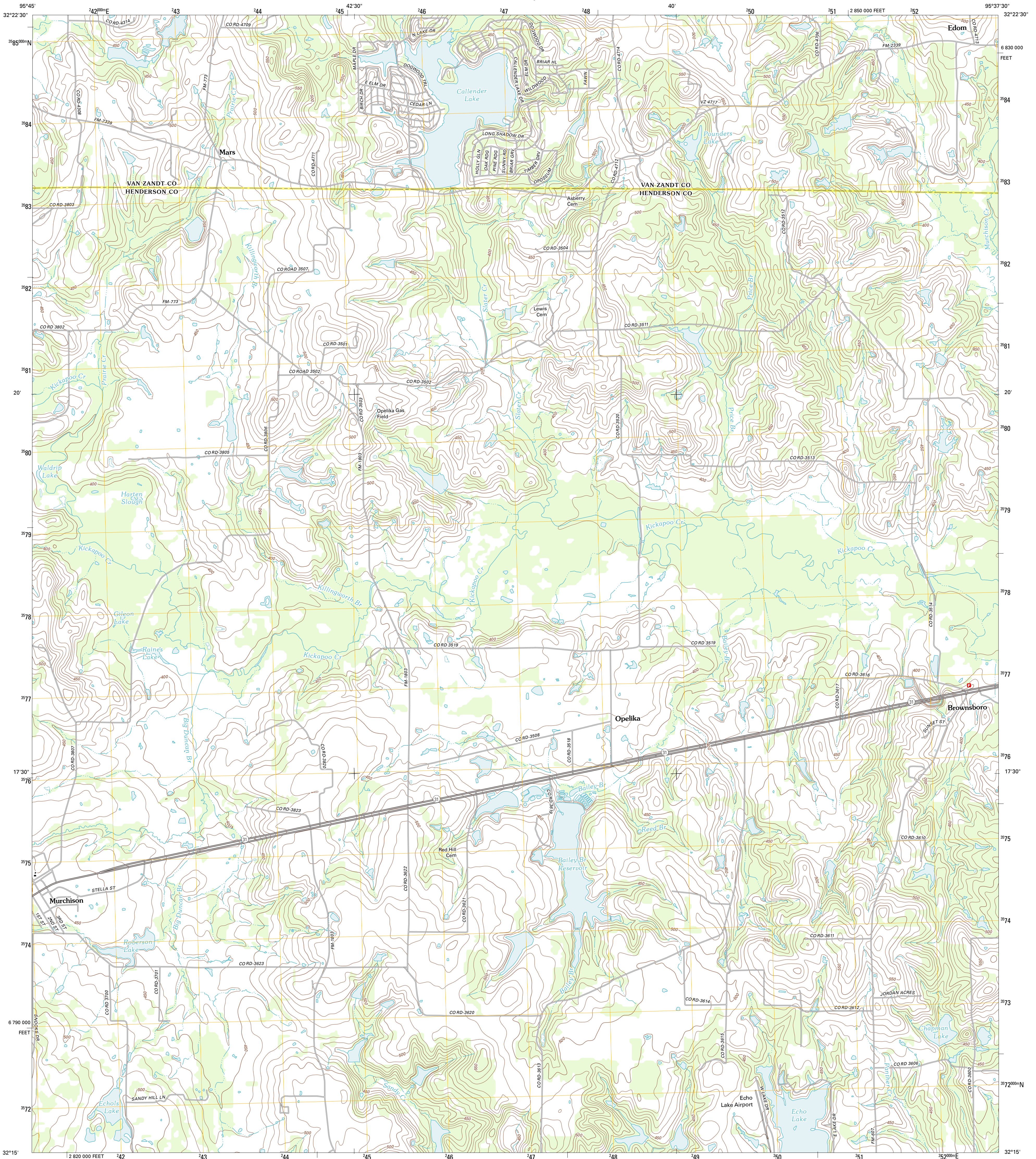




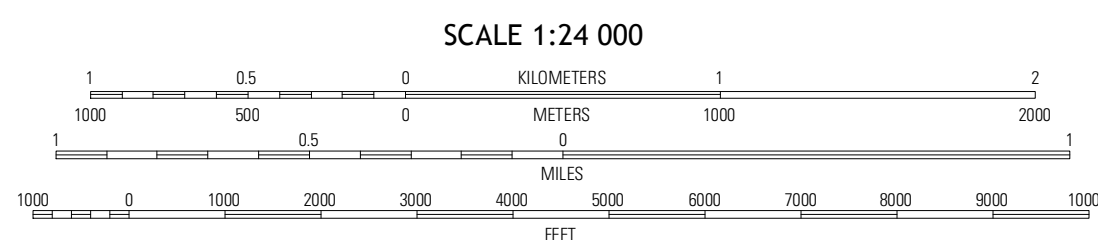
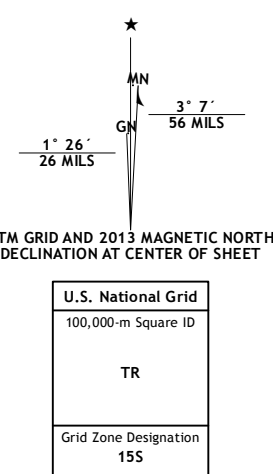
U.S. DEPARTMENT OF THE INTERIOR
U. S. GEOLOGICAL SURVEY



MURCHISON EAST QUADRANGLE
TEXAS
7.5-MINUTE SERIES



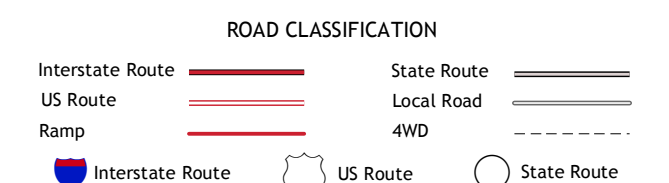
Produced by the United States Geological Survey
North American Datum of 1983 (NAD83)
World Geodetic System of 1984 (WGS84). Projection and
1 000-meter grid: Universal Transverse Mercator, Zone 15S
10 000-foot ticks: Texas Coordinate System of 1983 (north
central zone)



QUADRANGLE LOCATION

Martins Mill	Ben Wheeler	Carroll
Murchison West	Murchison East	Brownsboro
Athens	Langueville	Moore Station

ADJOINING 7.5' QUADRANGLES



CONTOUR INTERVAL 10 FEET
NORTH AMERICAN VERTICAL DATUM OF 1988

This map was produced to conform with the
National Geospatial Program US Topo Product Standards, 2011.
A metadata file associated with this product is draft version 0.6.7

MURCHISON EAST, TX
2013