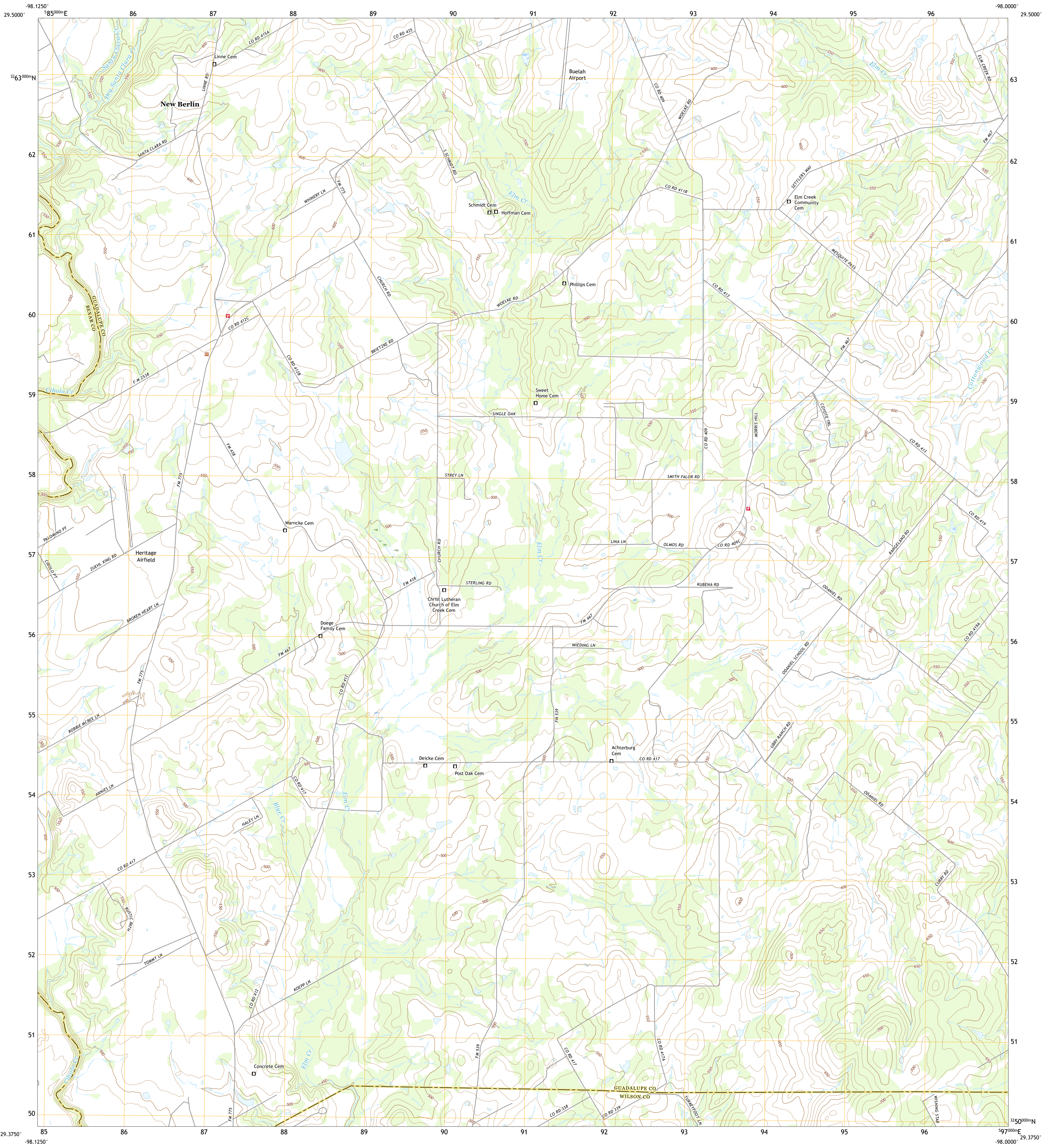




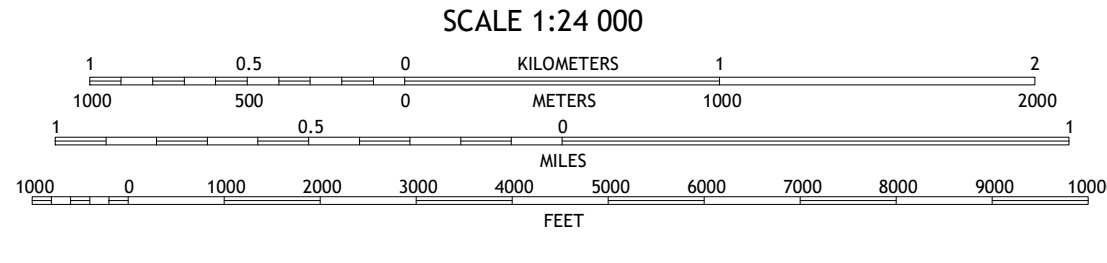
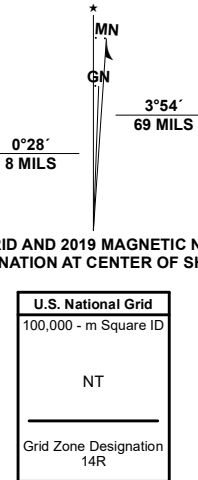
U.S. DEPARTMENT OF THE INTERIOR
U.S. GEOLOGICAL SURVEY



NEW BERLIN QUADRANGLE
TEXAS
7.5-MINUTE SERIES



Produced by the United States Geological Survey
North American Datum of 1983 (NAD83)
World Geodetic System of 1984 (WGS84). Projection and
1 000-meter grid/Universal Transverse Mercator, Zone 14R.
This map is not a legal document. Boundaries may be
generalized for this map scale. Private lands within government
reservations may not be shown. Obtain permission before
entering private lands.
Imagery.....NAIP, September 2016 - November 2016
Roads.....U.S. Census Bureau, 2015 - 2019
Names.....GNIS, 2008 - 2021
Hydrography.....National Hydrography Dataset, 2000 - 2018
Contours.....National Elevation Dataset, 2021
Boundaries.....Multiple sources; see metadata file 2019 - 2021
Wetlands.....FWS National Wetlands Inventory Not Available



QUADRANGLE LOCATION

1	2	3
4	5	6
7	8	

ADJOINING QUADRANGLES

ROAD CLASSIFICATION

Expressway	Local Connector
Secondary Hwy	Local Road
Ramp	4WD
Interstate Route	US Route
	State Route

NEW BERLIN, TX
2022

