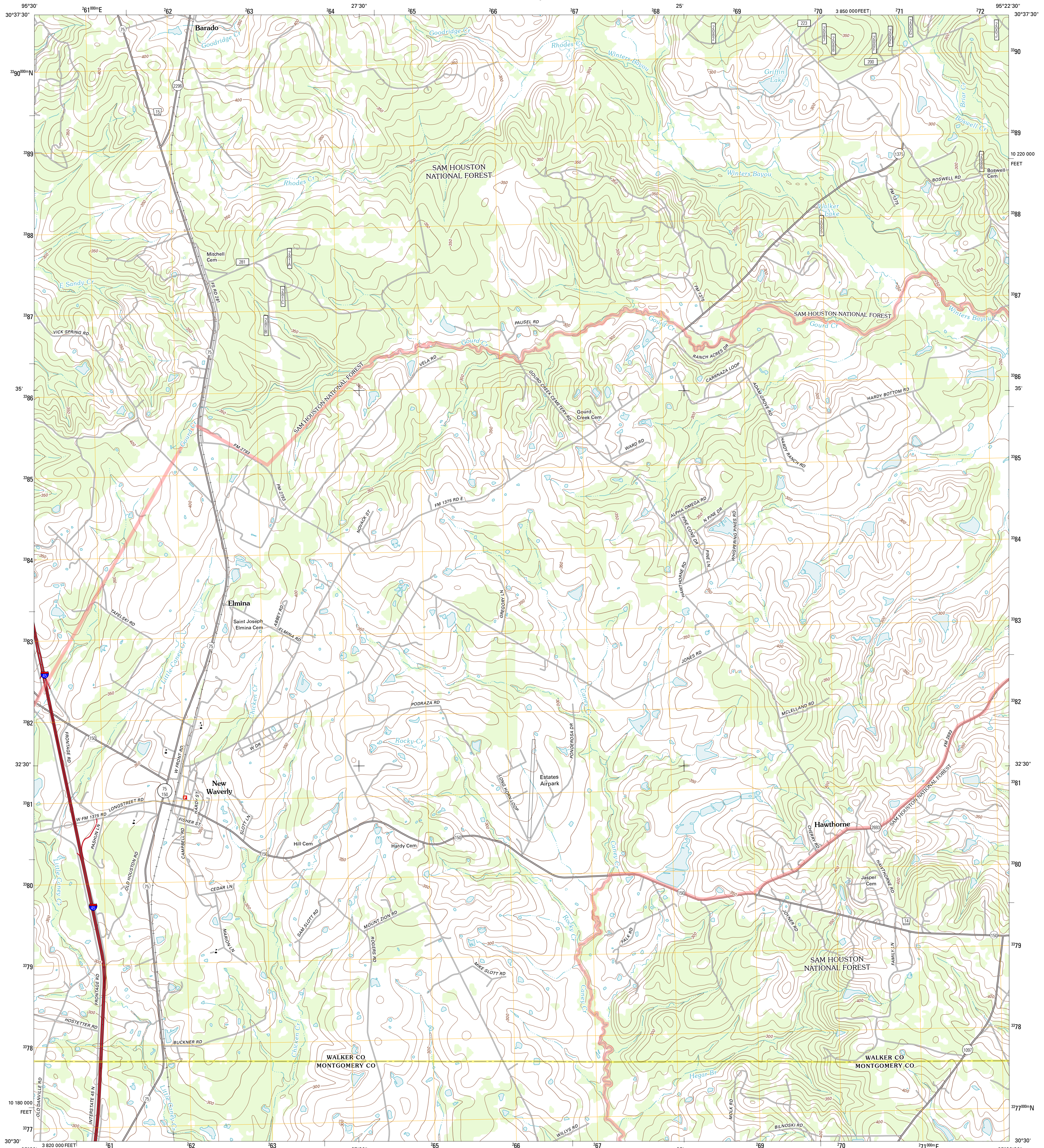




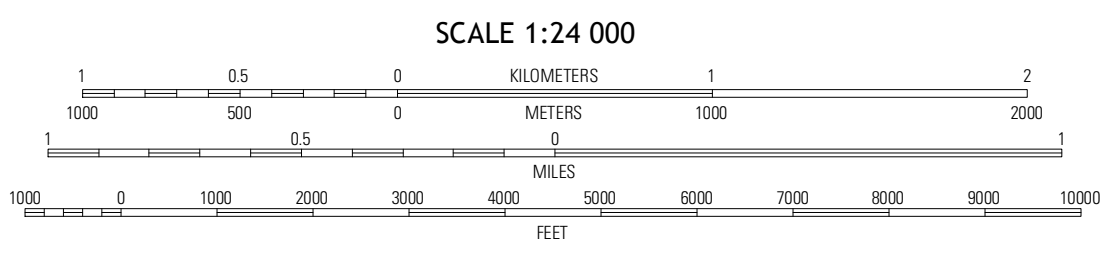
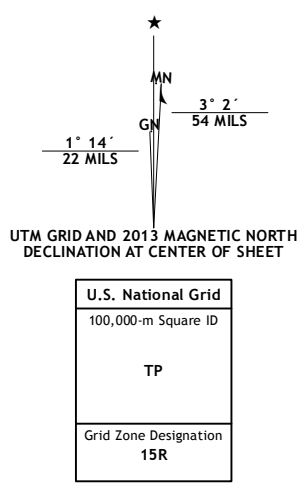
U.S. DEPARTMENT OF THE INTERIOR
U. S. GEOLOGICAL SURVEY



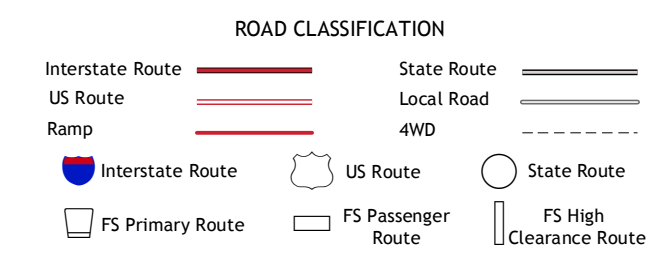
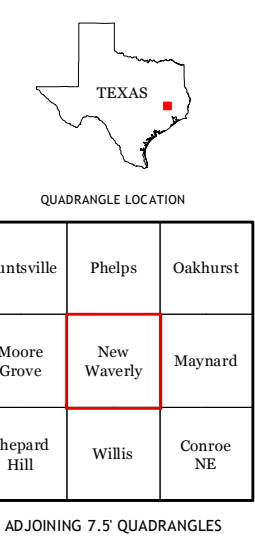
NEW WAVERLY QUADRANGLE
TEXAS
7.5-MINUTE SERIES



Produced by the United States Geological Survey
North American Datum of 1983 (NAD83)
World Geodetic System of 1984 (WGS84). Projection and
1:24,000 scale grid: Universal Transverse Mercator, Zone 15R
10 000-foot ticks: Texas Coordinate System of 1983 (central
zone)



CONTOUR INTERVAL 10 FEET
NORTH AMERICAN VERTICAL DATUM OF 1988
This map was produced to conform with the
National Geospatial Program US Topo Product Standards, 2011.
A metadata file associated with this product is draft version 0.6.7



Check with local Forest Service unit
for current travel conditions and restrictions.

NEW WAVERLY, TX
2013

ADJOINING 7.5 QUADRANGLES

Imagery: N.A.I.P., May 2010
Roads: ©2006-2012, TomTom
Roads within US Forest Service Lands: ©2010-2012, USFS
Data with limited Forest Service updates, 2012
Names: ©2010-2012, GNIS
Hydrography: National Hydrography Dataset, 2010
Contours: National Elevation Dataset, 2003
Boundaries: Census, IBWC, IBC, USGS, 1972 - 2012