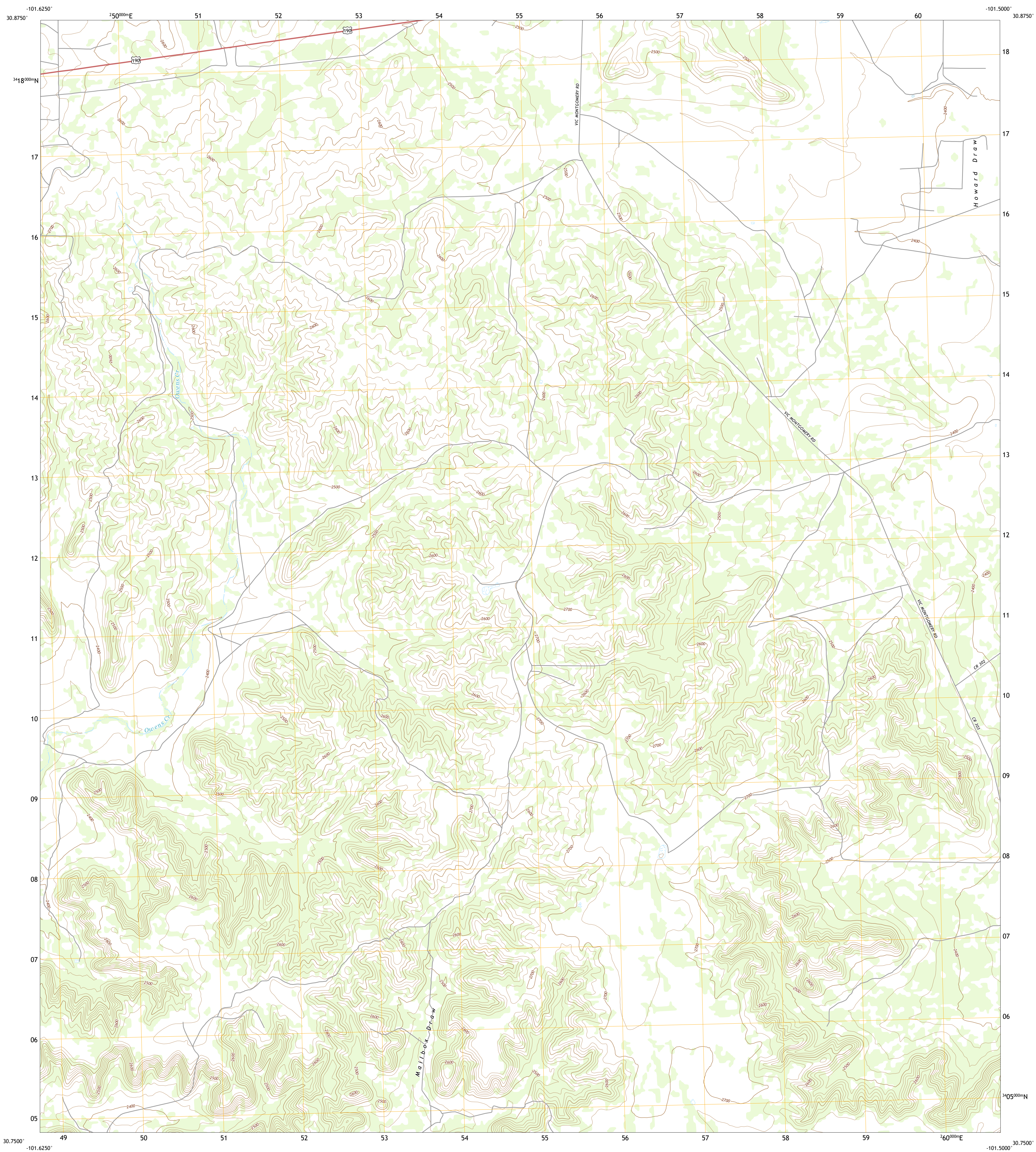




U.S. DEPARTMENT OF THE INTERIOR
U.S. GEOLOGICAL SURVEY

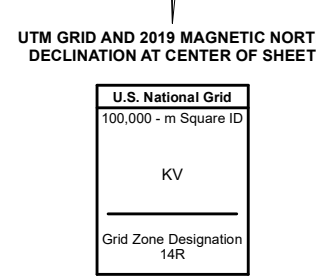
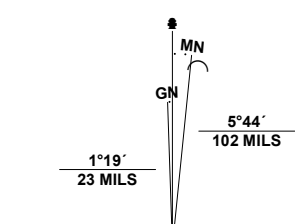


OWENS CREEK SE QUADRANGLE
TEXAS - CROCKETT COUNTY
7.5-MINUTE SERIES



Produced by the United States Geological Survey

North American Datum of 1983 (NAD83)
World Geodetic System of 1984 (WGS84) - Projection and 1 000-meter grid/Universal Transverse Mercator, Zone 14R
This map is not a legal document. Boundaries may be generalized for this map scale. Private lands within government reservations may not be shown. Obtain permission before entering private lands.
Imagery.....NAIP, August 2016 - November 2016
Roads.....U.S. Census Bureau, 2015 - 2018
Names.....GNIS, 2016 - 2016
Hydrography.....National Hydrography Dataset, 2002 - 2018
Contours.....National Elevation Dataset, 2020
Boundaries.....Multiple sources; see metadata file 2019 - 2021
Wetlands.....FWS National Wetlands Inventory Not Available

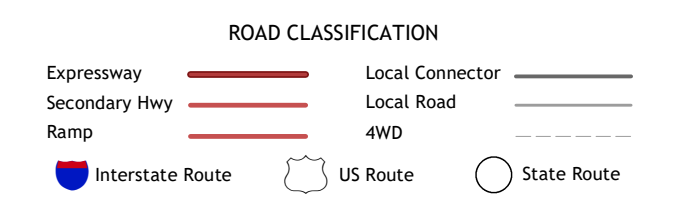


SCALE 1:24 000
CONTOUR INTERVAL 20 FEET
NORTH AMERICAN VERTICAL DATUM OF 1988
This map was produced to conform with the National Geospatial Program US Topo Product Standard.



QUADRANGLE LOCATION

1	2	3
4	5	6
7	8	



ADJOINING QUADRANGLES

1 Owens Creek NW
2 Owens Creek NE
3 Schreeman Draw NW
4 Owens Creek SW
5 Schreeman Draw SW
6 Fort Lancaster
7 Bachelor Hill
8 Pikes Peak

