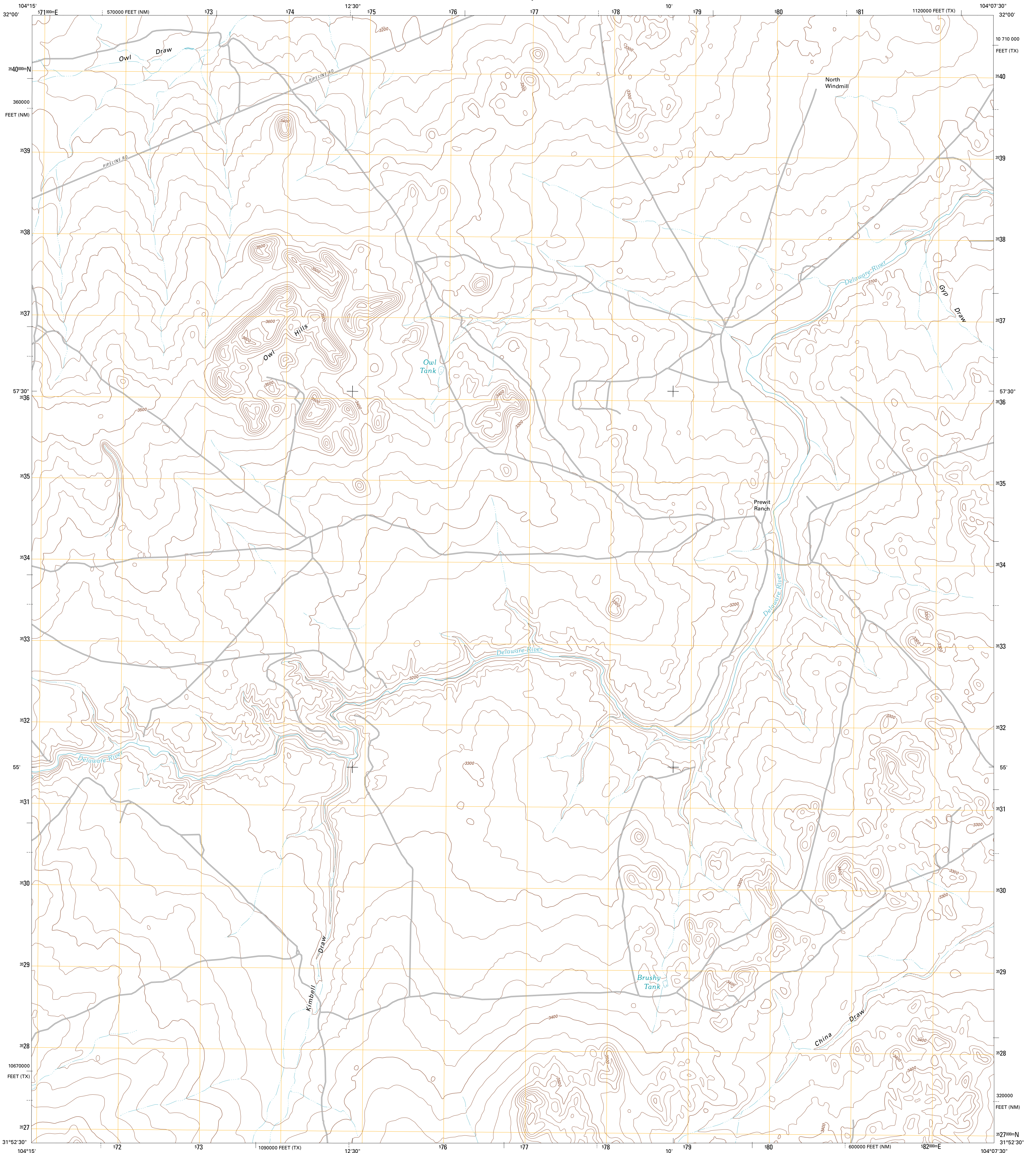




U.S. DEPARTMENT OF THE INTERIOR
U. S. GEOLOGICAL SURVEY

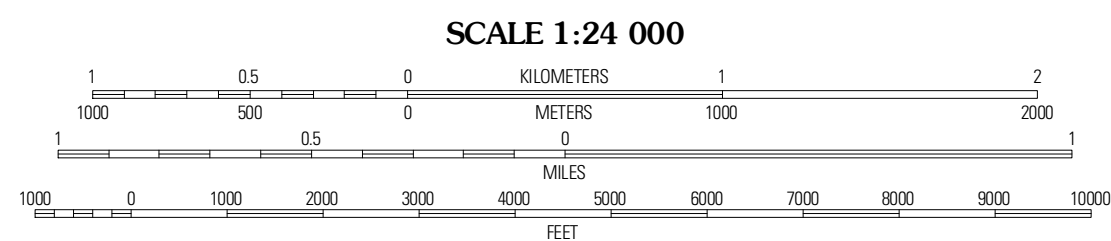
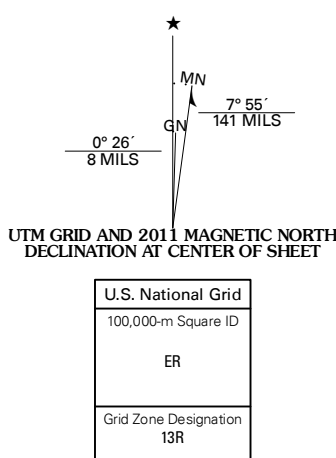


OWL HILLS QUADRANGLE
TEXAS-NEW MEXICO
7.5-MINUTE SERIES



Produced by the United States Geological Survey
North American Datum of 1983 (NAD83)
World Geodetic System of 1984 (WGS84). Projection and
1 000-meter grid. Universal Transverse Mercator, Zone 13R
10 000-foot ticks: Texas Coordinate System of 1983 (central
zone), New Mexico Coordinate System of 1983 (east zone)

Imagery: NIP, September 2008
Roads: 2006-2010 Title Atlas
Names: GNIS, 2010
Hydrography: National Hydrography Dataset, 2008
Contours: National Elevation Dataset, 2005



CONTOUR INTERVAL 20 FEET
NORTH AMERICAN VERTICAL DATUM OF 1988
This map was produced to conform with version 0.5.10 of the
draft USGS Standards for 7.5-Minute Quadrangle Maps.
A metadata file associated with this product is draft version 0.5.11



QUADRANGLE LOCATION

Jumping Spring	Cottonwood Hills	Red Bluff
Outlaw Spring	Owl Hills	Screw Bean Draw NE
Castle Hill	Screw Bean Draw West	Screw Bean Draw East

ADJOINING 7.5 QUADRANGLES

ROAD CLASSIFICATION

Interstate Route	State Route
US Route	Local Road
Ramp	4WD

OWL HILLS, TX-NM
2011