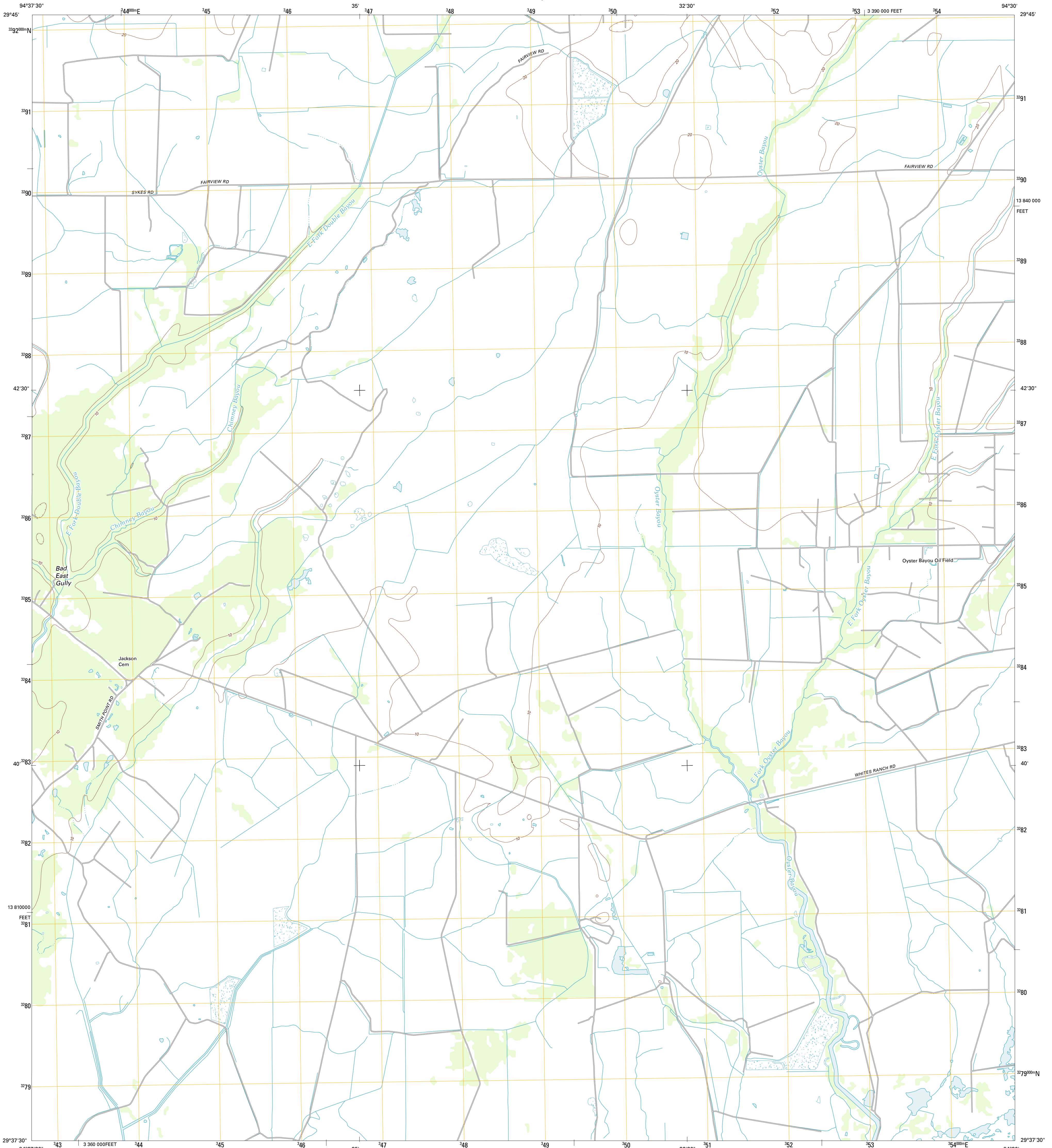




U.S. DEPARTMENT OF THE INTERIOR
U. S. GEOLOGICAL SURVEY

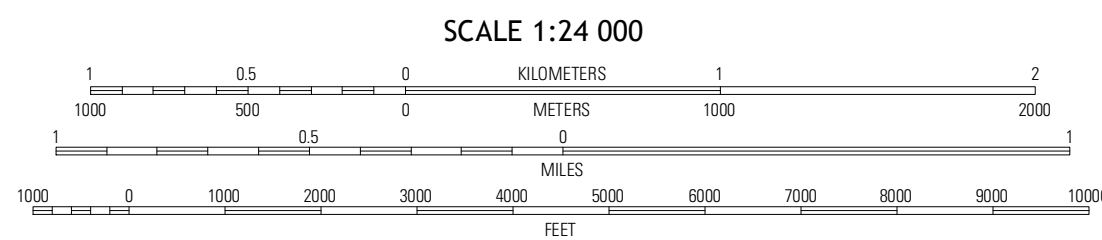
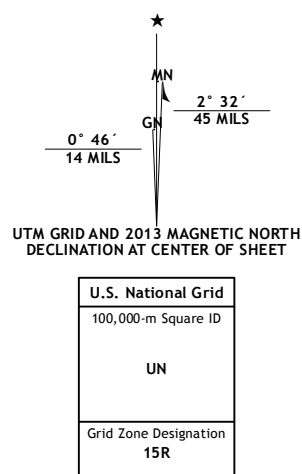


OYSTER BAYOU QUADRANGLE
TEXAS-CHAMBERS CO.
7.5-MINUTE SERIES



Produced by the United States Geological Survey
North American Datum of 1983 (NAD83)
World Geodetic System of 1984 (WGS84). Projection and
1 000-meter grid: Universal Transverse Mercator, Zone 15R
10 000-foot ticks: Texas Coordinate System of 1983 (south
central zone)

ImageryNAIP, April 2010
Roads©2006-2012 TomTom
NamesGNIS, 2012
HydrographyNational Hydrography Dataset, 2010
ContoursNational Elevation Dataset, 2008
BoundariesCensus, IBWC, IBC, USGS, 1972 - 2012

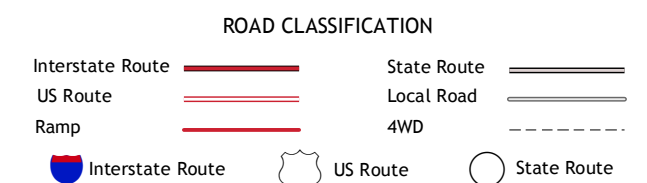


SCALE 1:24 000
CONTOUR INTERVAL 10 FEET
NORTH AMERICAN VERTICAL DATUM OF 1988
This map was produced to conform with the
National Geospatial Program US Topo Product Standard, 2011.
A metadata file associated with this product is draft version 0.6.7



QUADRANGLE LOCATION

| | | |
|-----------------|--------------|---------------------|
| Anahuac | Monroe City | Stowell |
| Oak Island | Oyster Bayou | Stanolind Reservoir |
| Lake Stephenson | Frozen Point | High Island |



OYSTER BAYOU, TX
2013

ADJOINING 7.5 QUADRANGLES