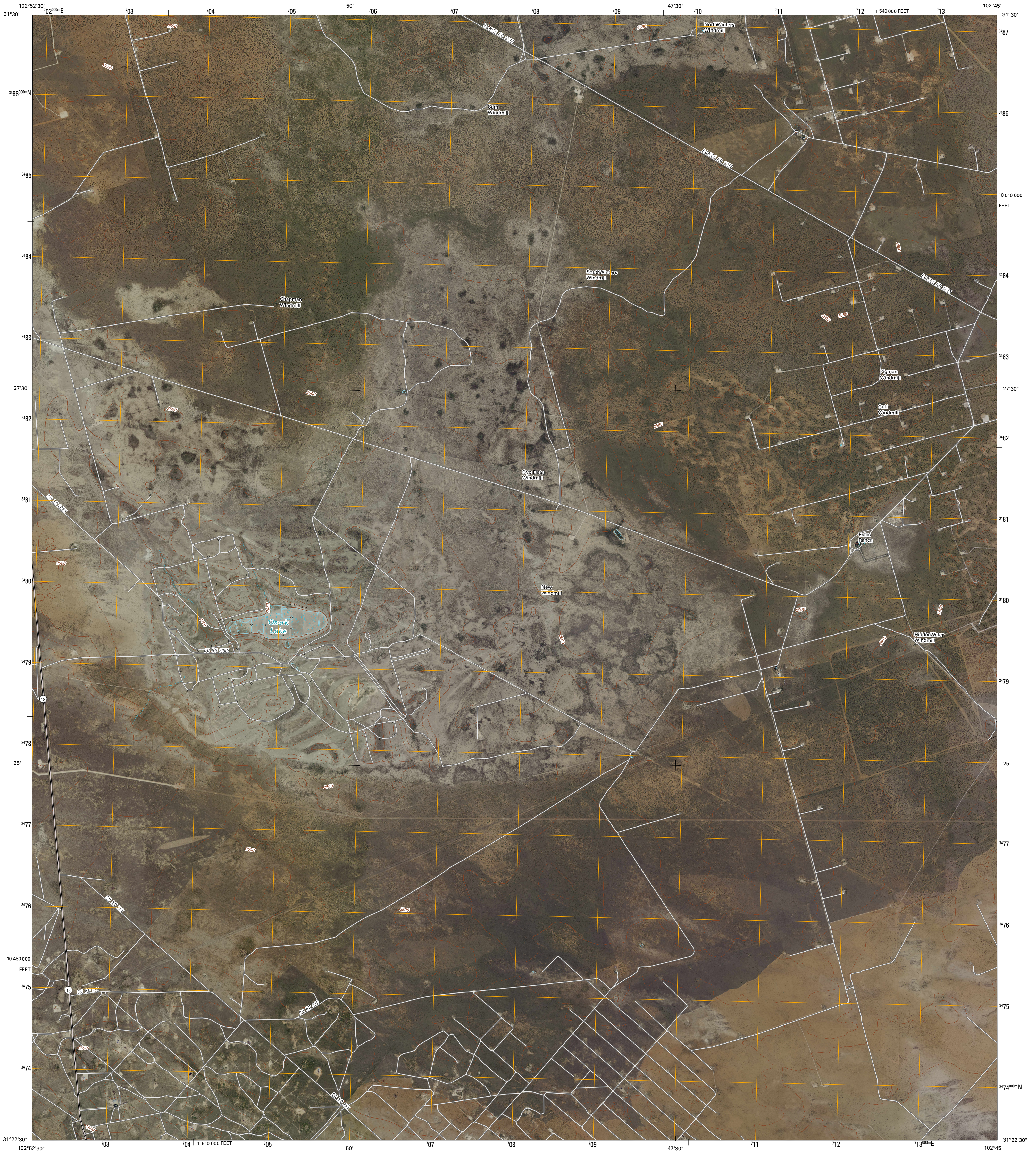




U.S. DEPARTMENT OF THE INTERIOR  
U. S. GEOLOGICAL SURVEY

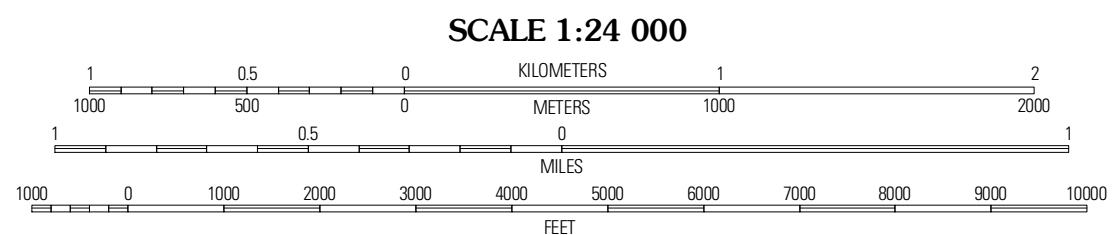
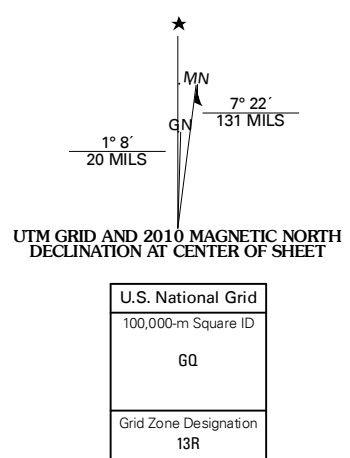


OZARK LAKE QUADRANGLE  
TEXAS  
7.5-MINUTE SERIES



Produced by the United States Geological Survey  
North American Datum of 1983 (NAD83)  
World Geodetic System of 1984 (WGS84). Projection and  
1 000-meter grid: Universal Transverse Mercator, Zone 13R  
10 000-foot ticks: Texas Coordinate System of 1983  
(central zone)

Imagery.....NAP, September 2008  
Roads.....US Census Bureau TIGER data  
with limited USGS updates, 2006 - 2008  
Names.....GNIS, 2008  
Hydrography.....National Hydrography Dataset, 1995  
Contours.....National Elevation Dataset, 2008



SCALE 1:24 000

CONTOUR INTERVAL 10 FEET

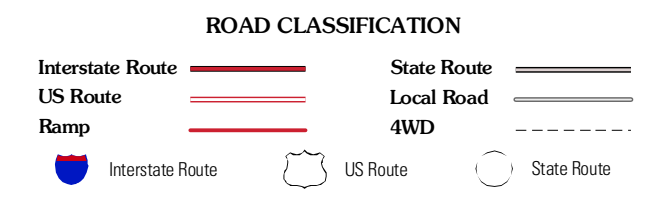
This map was produced to conform with version 0.5.10 of the  
draft USGS Standards for 7.5-Minute Quadrangle Maps.  
A metadata file associated with this product is also draft version 0.5.10



QUADRANGLE LOCATION

Menahans SW	Menahans SE	Pemwell SW
7 L Ranch	Ozark Lake	Imperial NW
Grandfalls SW	Grandfalls	Imperial

ADJOINING 7.5 QUADRANGLES  
TX 31102-234



OZARK LAKE, TX  
2010