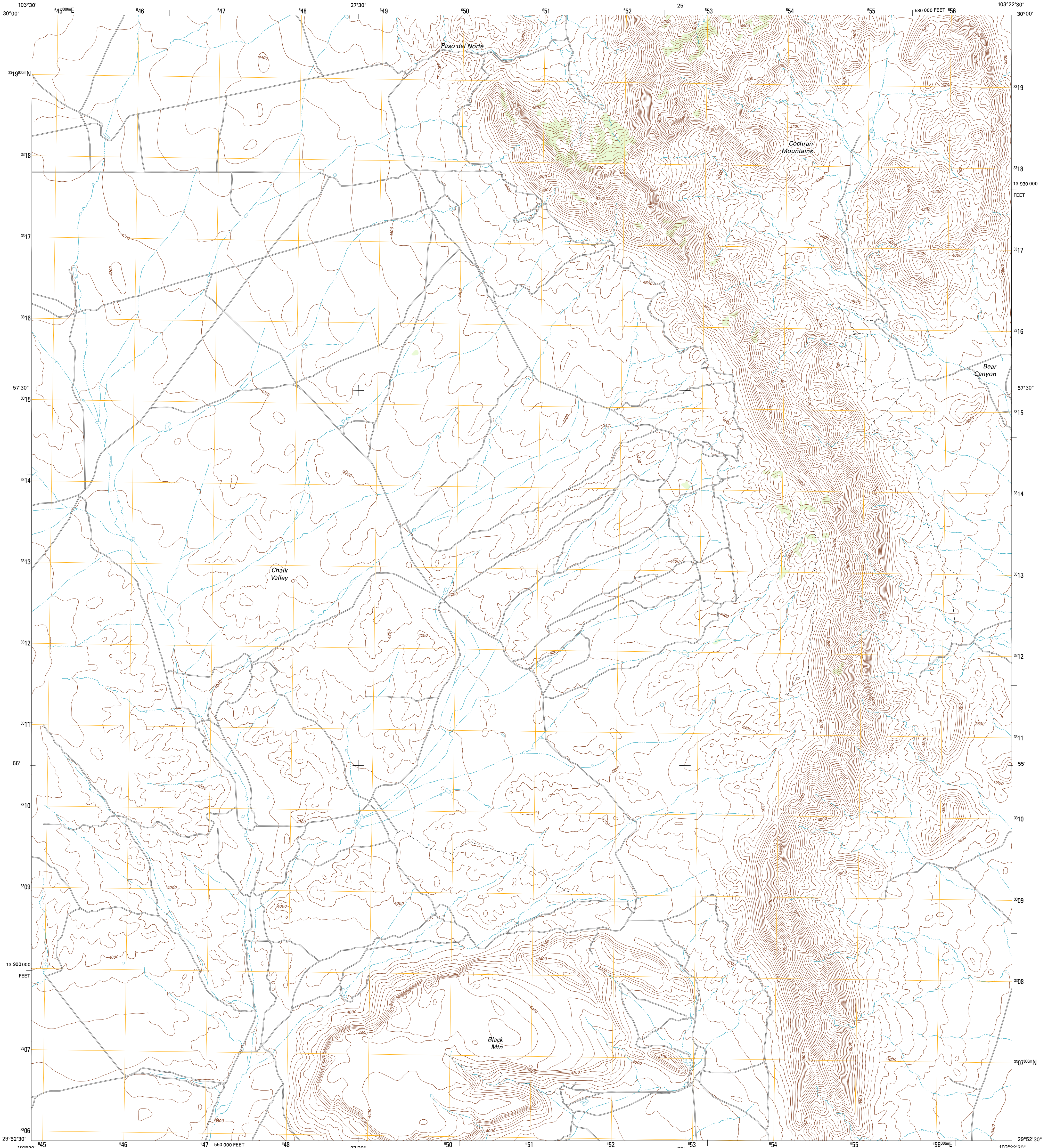




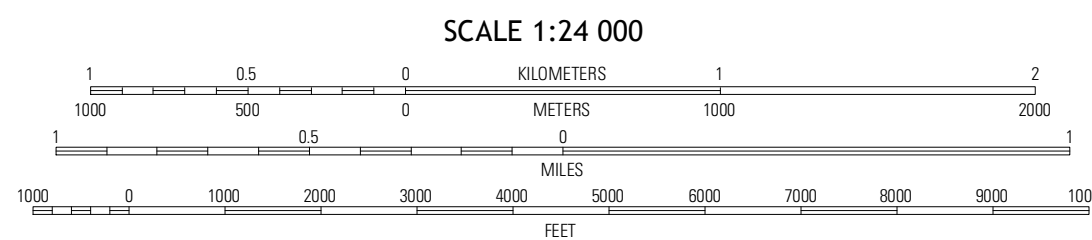
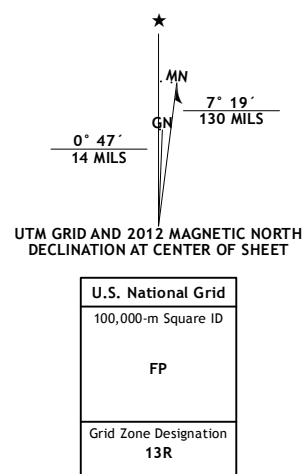
U.S. DEPARTMENT OF THE INTERIOR
U. S. GEOLOGICAL SURVEY



PASO DEL NORTE QUADRANGLE
TEXAS-BREWSTER CO.
7.5-MINUTE SERIES



Produced by the United States Geological Survey
North American Datum of 1983 (NAD83)
World Geodetic System of 1984 (WGS84). Projection and
1 000-meter grid: Universal Transverse Mercator, Zone 13R
10 000-foot ticks: Texas Coordinate System of 1983 (south
central zone)



QUADRANGLE LOCATION

Elephant Mountain	Rock House Gap	Simpson Springs Mountain
Whirlwind Spring	Paso Del Norte	Maravillas Gap
Beck Hill	Santiago Peak	Y.E. Mesa

ROAD CLASSIFICATION

Interstate Route	State Route
US Route	Local Road
Ramp	4WD

Imagery.....N.A.I.P., August 2010
 Roads.....C2006-2012 TomTom
 Names.....GNS, 2012
 Hydrography.....National Hydrography Dataset, 2010
 Contours.....National Elevation Dataset, 2006
 Boundaries.....Census, IBW, IBC, USGS, 1972 - 2012

This map was produced to conform with the National Geospatial Program US Topo Product Standard, 2011. A metadata file associated with this product is draft version 0.6.7

PASO DEL NORTE, TX
2012

ADJOINING 7.5 QUADRANGLES