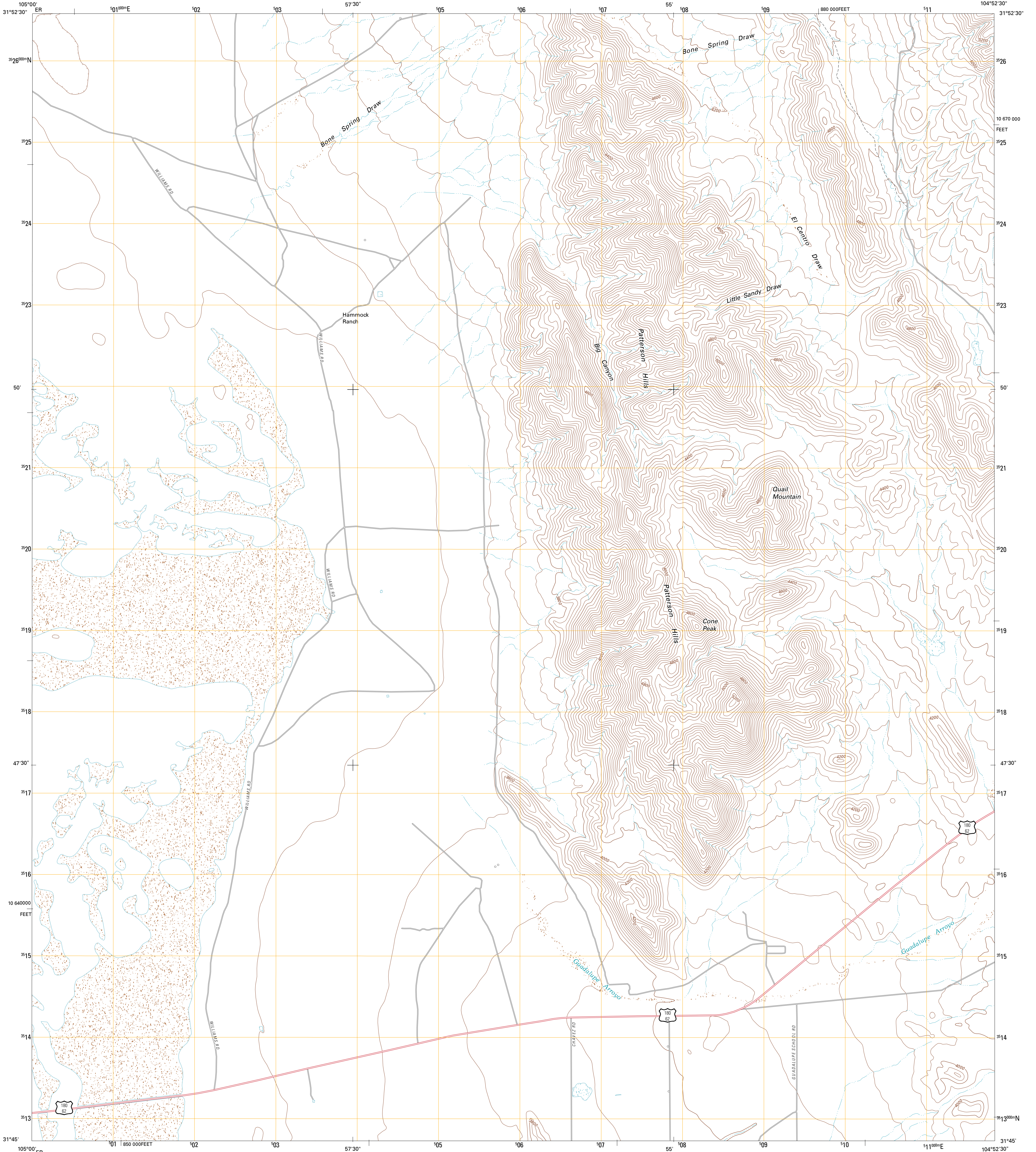




U.S. DEPARTMENT OF THE INTERIOR
U. S. GEOLOGICAL SURVEY

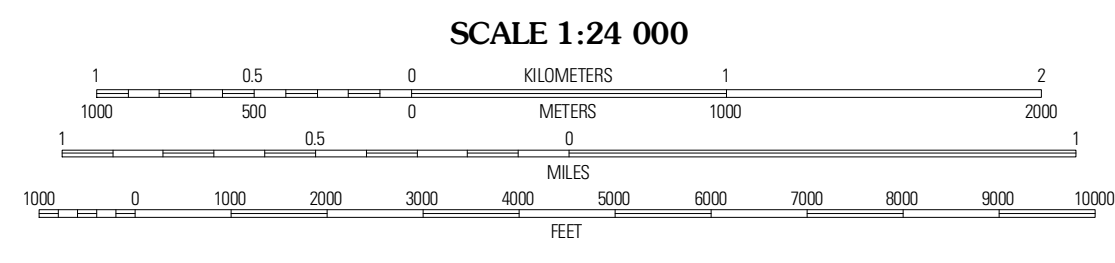
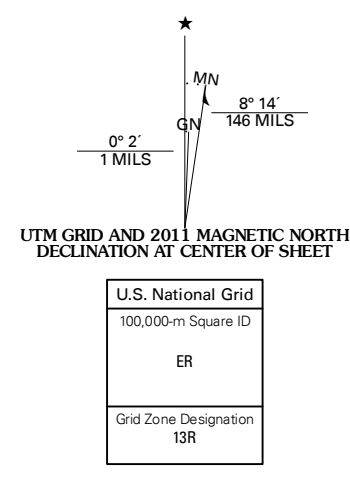


PATTERSON HILLS QUADRANGLE
TEXAS
7.5-MINUTE SERIES

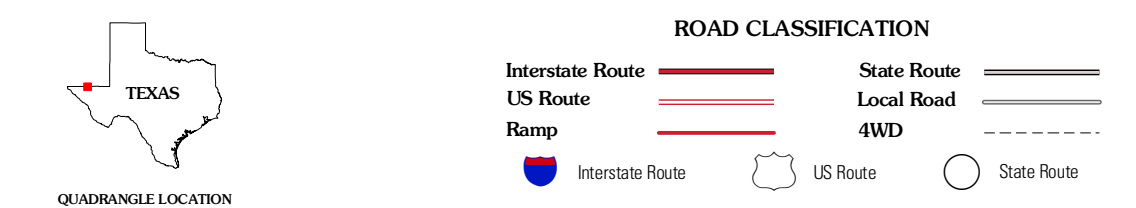


Produced by the United States Geological Survey
North American Datum of 1983 (NAD83)
World Geodetic System of 1984 (WGS84) Projection and
1 000-meter grid: Universal Transverse Mercator, Zone 13R
10 000-foot ticks: Texas Coordinate System of 1983 (central zone)

Imagery.....NAD, September 2008
Roads.....©2006-2010 Tele Atlas
Names.....GNIS, 2010
Hydrography.....National Hydrography Dataset, 2008
Contours.....National Elevation Dataset, 2005



CONTOUR INTERVAL 40 FEET
NORTH AMERICAN VERTICAL DATUM OF 1988
This map was produced to conform with version 0.5.10 of the
draft USGS Standards for 7.5-Minute Quadrangle Maps.
A metadata file associated with this product is draft version 0.5.11



QUADRANGLE LOCATION

| | | |
|------------------|-------------------------|----------------|
| Linda Lake North | P X Flat | Guadalupe Peak |
| Linda Lake South | Patterson Hills | Guadalupe Pass |
| Salt Flat | Bitter Wolf Mountain NW | Six Bar Ranch |

ADJOINING 7.5 QUADRANGLES

PATTERSON HILLS, TX
2011