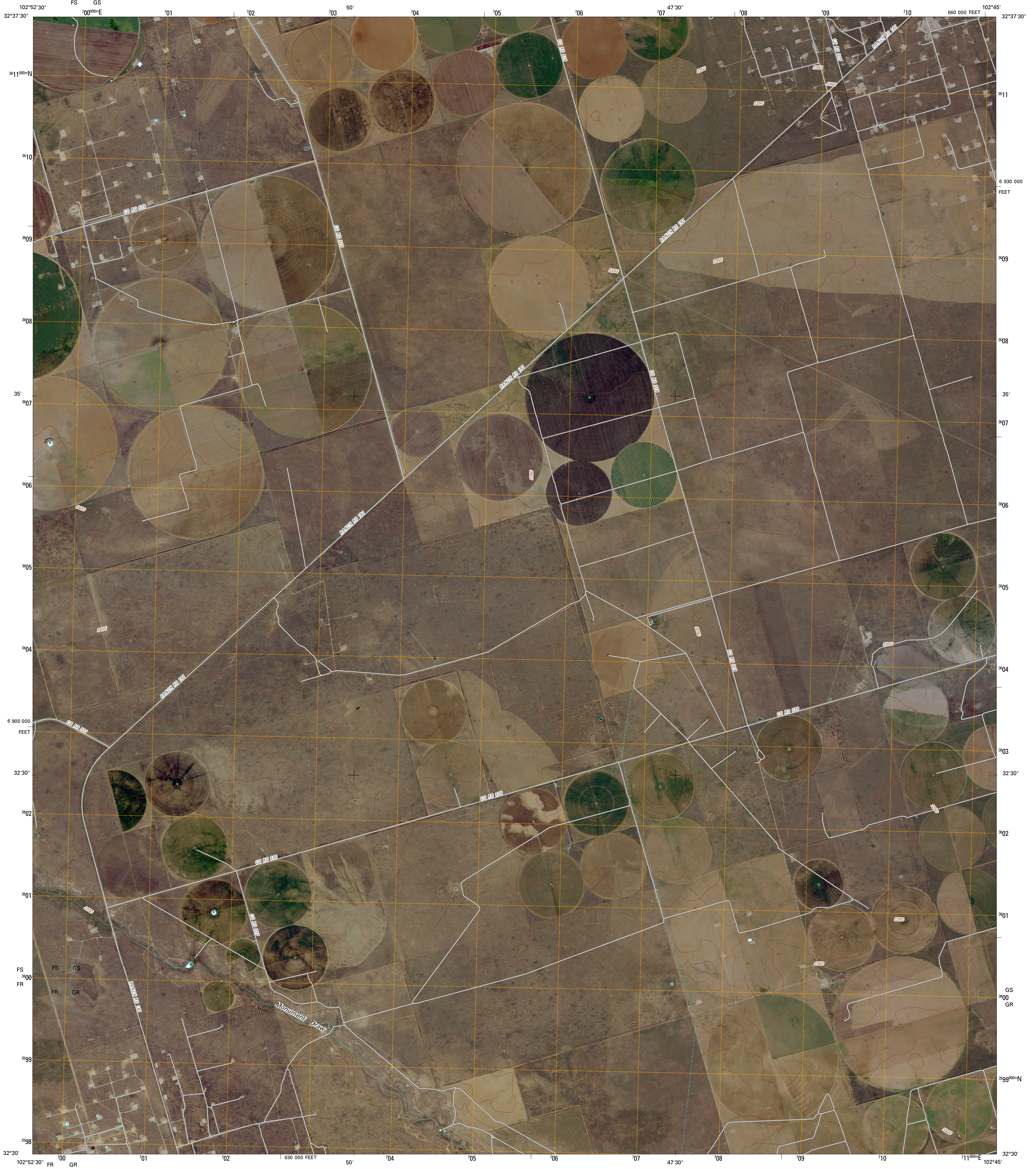




U.S. DEPARTMENT OF THE INTERIOR
U. S. GEOLOGICAL SURVEY

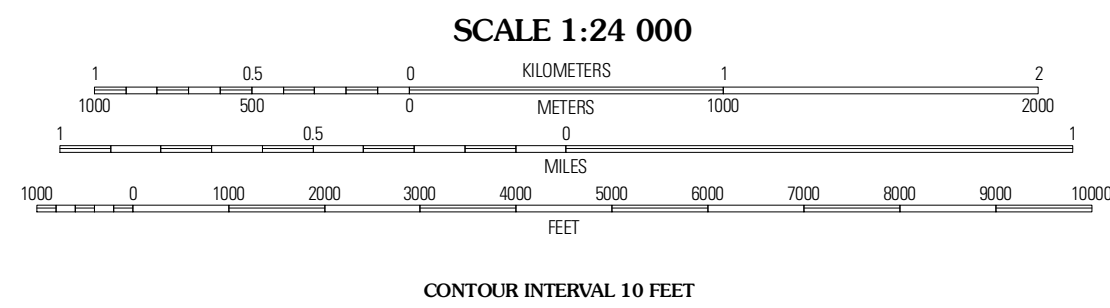
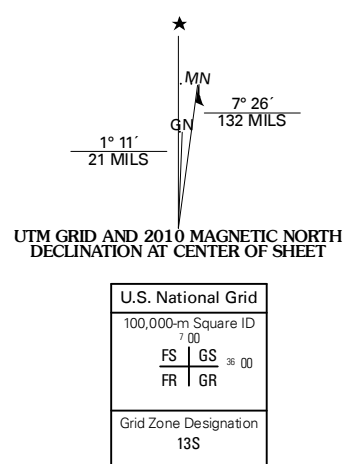


PAYNES CORNER SE QUADRANGLE
TEXAS
7.5-MINUTE SERIES



Produced by the United States Geological Survey
North American Datum of 1983 (NAD83)
World Geodetic System of 1984 (WGS84), Projection and
1 000-meter grid; Texas Transverse Mercator, Zone 13S
10 000-foot ticks; Texas Coordinate System of 1983
(north central zone)

Imagery.....NAIP, September 2008
Roads.....US Census Bureau TIGER data
with limited USGS updates, 2008
Names.....GNIS, 2008
Hydrography.....National Hydrography Dataset, 1995
Contours.....National Elevation Dataset, 2007

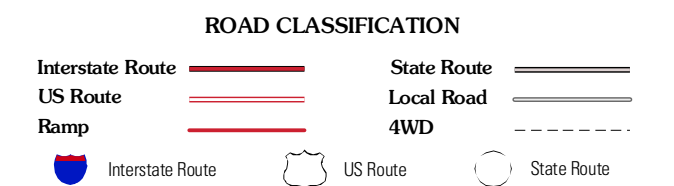


This map was produced to conform with version 0.5.10 of the
draft USGS Standards for 7.5-Minute Quadrangle Maps.
A metadata file associated with this product is also draft version 0.5.10



QUADRANGLE LOCATION		
Paynes Corner NW	Paynes Corner	Seminole
Brinson Ranch	Paynes Corner SE	Seminole SW
Jumbo Hill	Fossil City	Shafter Lake

ADJOINING 7.5' QUADRANGLES
TX 32102-321



PAYNES CORNER SE, TX
2010