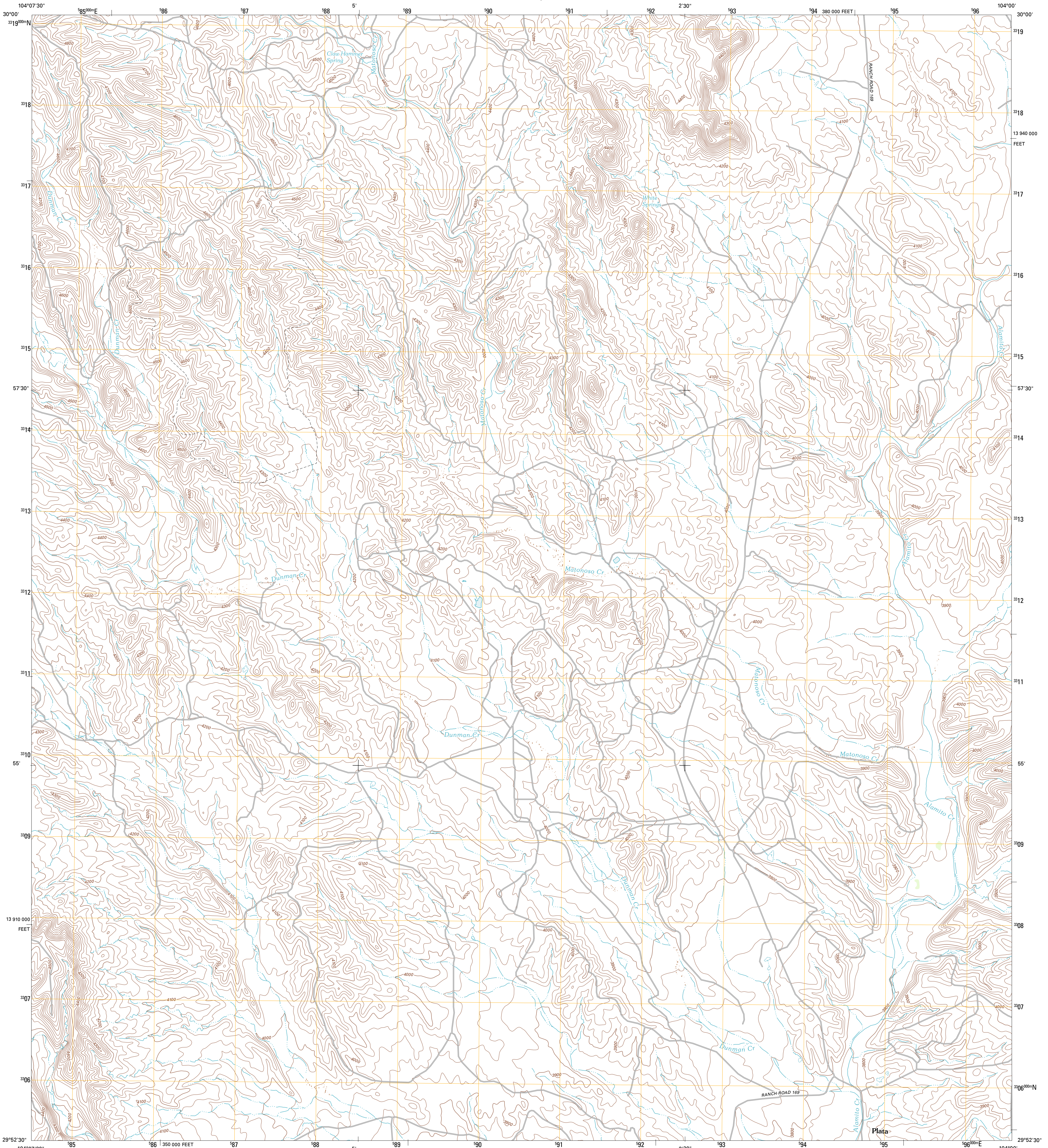




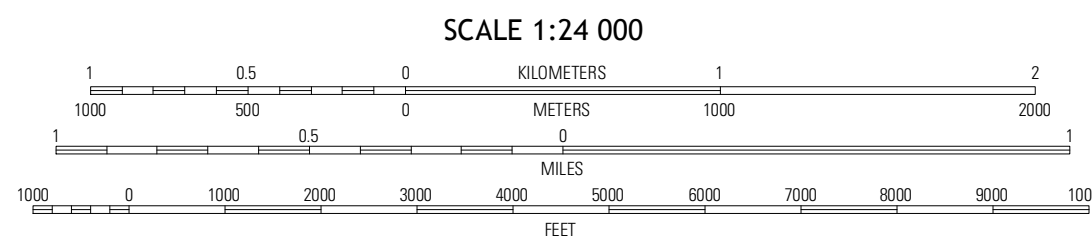
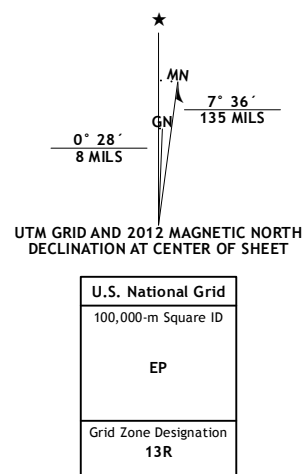
U.S. DEPARTMENT OF THE INTERIOR  
U. S. GEOLOGICAL SURVEY



PLATA NE QUADRANGLE  
TEXAS-PRESIDIO CO.  
7.5-MINUTE SERIES



Produced by the United States Geological Survey  
North American Datum of 1983 (NAD83)  
World Geodetic System of 1984 (WGS84), Projection and  
1 000-meter grid: Universal Transverse Mercator, Zone 13R  
10 000-foot ticks: Texas Coordinate System of 1983 (south  
central zone)

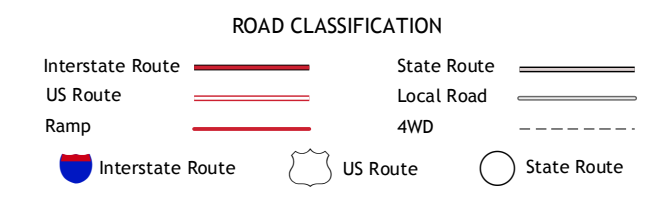


CONTOUR INTERVAL 20 FEET  
NORTH AMERICAN VERTICAL DATUM OF 1988  
This map was produced to conform with the  
National Geospatial Program US Topo Product Standard, 2011.  
A metadata file associated with this product is draft version 0.6.7



QUADRANGLE LOCATION

San Esteban Lake SW	Frenchman Hills	Devils Den
Cerro Prietas	Plata NE	Jordan Gap
Clemons Mountains	Plata	Puerto Porcillo



PLATA NE, TX  
2012

ADJOINING 7.5 QUADRANGLES