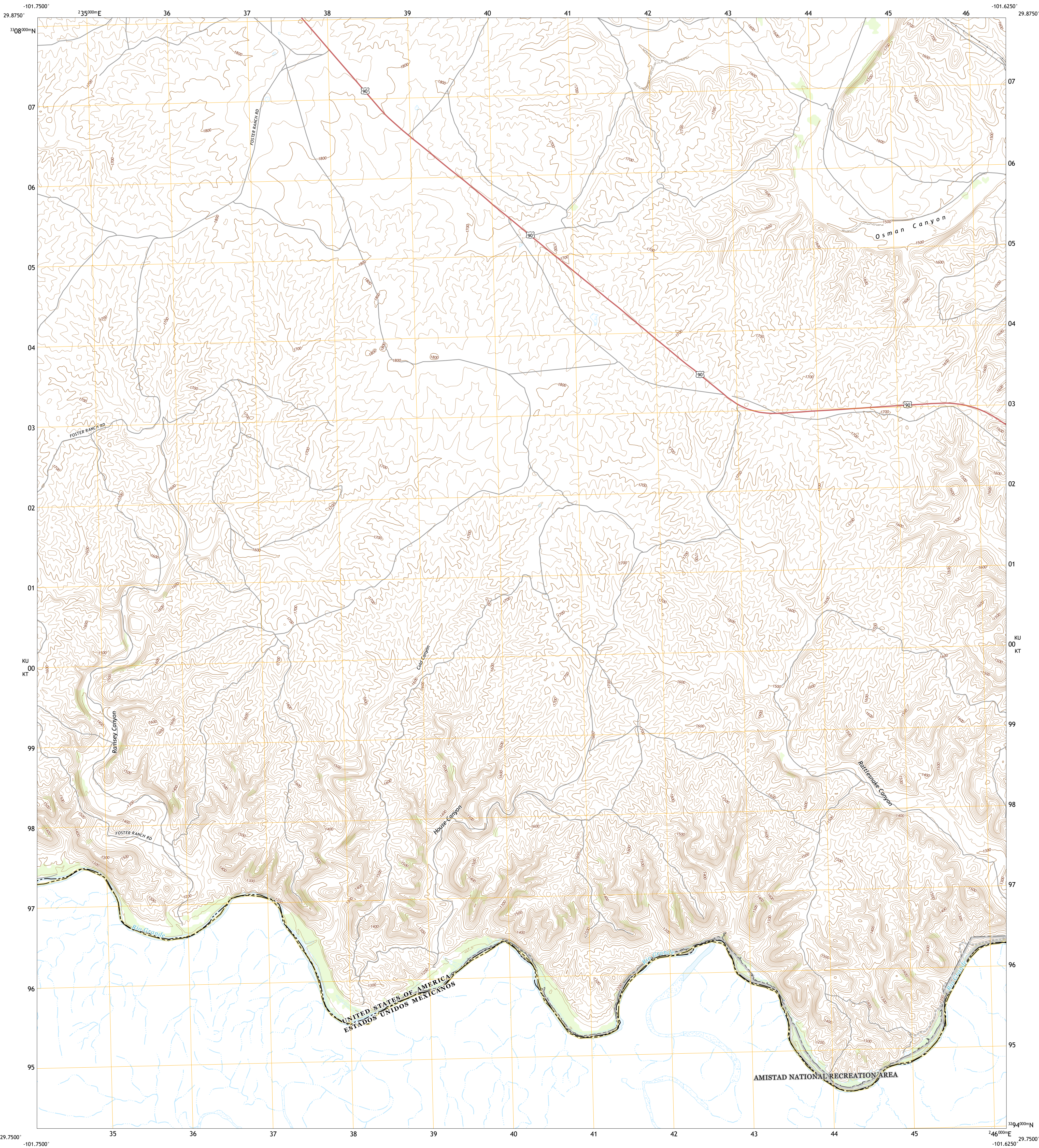




U.S. DEPARTMENT OF THE INTERIOR
U.S. GEOLOGICAL SURVEY

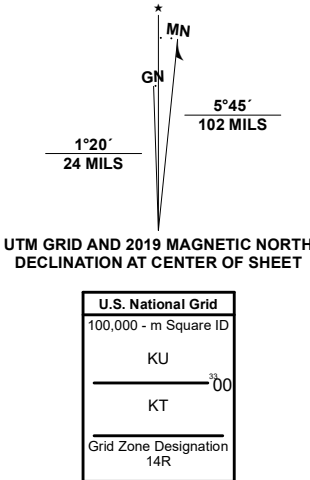


RAMSEY CANYON QUADRANGLE
TEXAS - VAL VERDE COUNTY
7.5-MINUTE SERIES



Produced by the United States Geological Survey

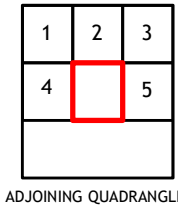
North American Datum of 1983 (NAD83)
World Geodetic System of 1984 (WGS84), Projection and
1 000-meter grid/Universal Transverse Mercator, Zone 14R
This map is not a legal document. Boundaries may be
generalized for this map scale. Private lands within government
reservations may not be shown. Obtain permission before
entering private lands.
Imagery.....NAIP, August 2016 - November 2016
Roads.....U.S. Census Bureau, 2015 - 2018
Names.....GNIS, 2015 - 2016
Hydrography.....National Hydrography Dataset, 2002 - 2018
Contours.....National Elevation Dataset, 2020
Boundaries.....Multiple sources; see metadata file 2019 - 2021
Wetlands.....FWS National Wetlands Inventory Not Available



CONTOUR INTERVAL 20 FEET
NORTH AMERICAN VERTICAL DATUM OF 1988
This map was produced to conform with the
National Geospatial Program US Topo Product Standard.



QUADRANGLE LOCATION



1 Lozier Canyon North
2 Pumpville
3 Harkell Canyon
4 Lozier Canyon South
5 Langtry

ROAD CLASSIFICATION		
Expressway	Local Connector	
Secondary Hwy	Local Road	
Ramp	4WD	
Interstate Route	US Route	State Route

RAMSEY CANYON, TX, COA
2022

