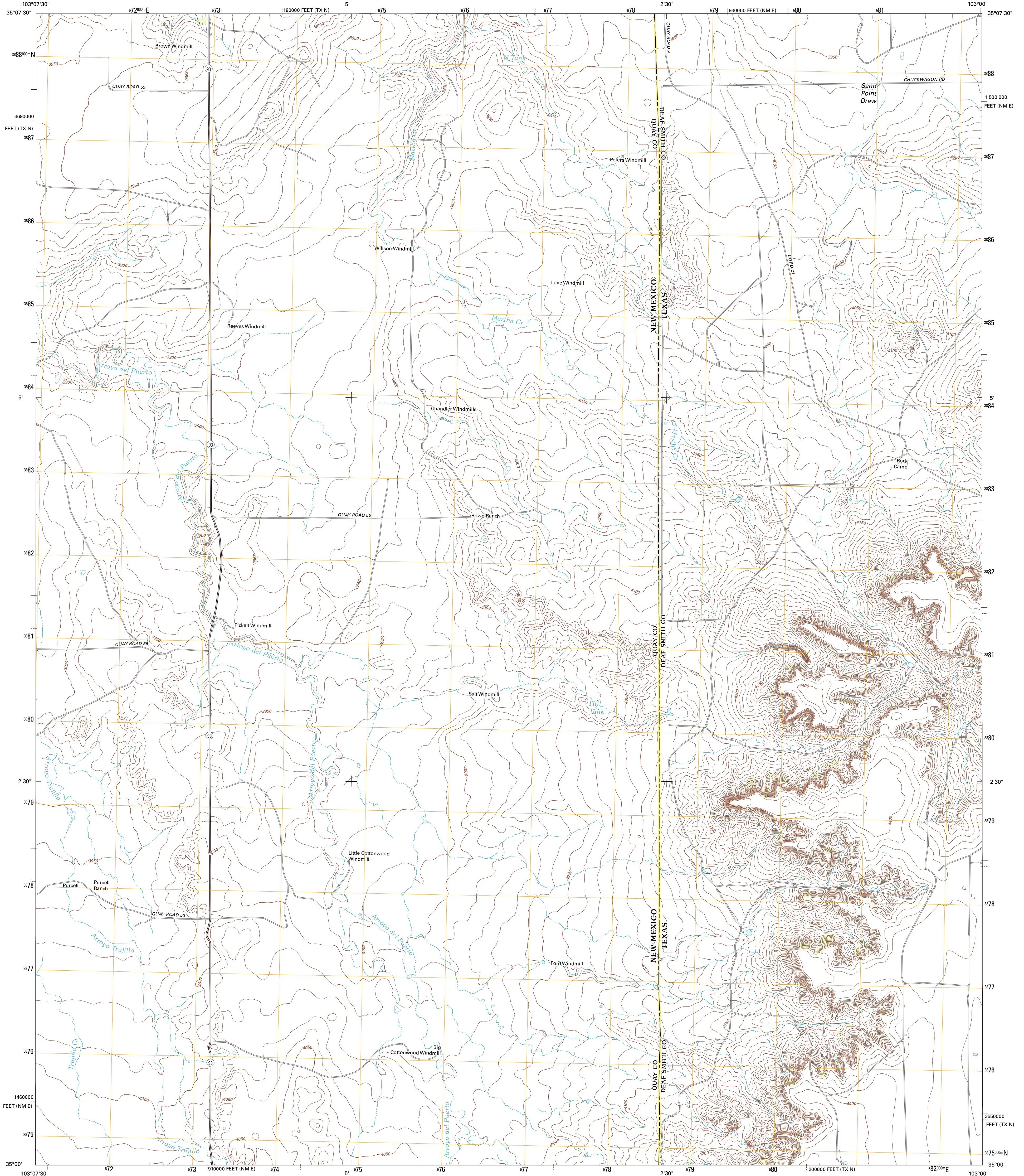




U.S. DEPARTMENT OF THE INTERIOR
U. S. GEOLOGICAL SURVEY

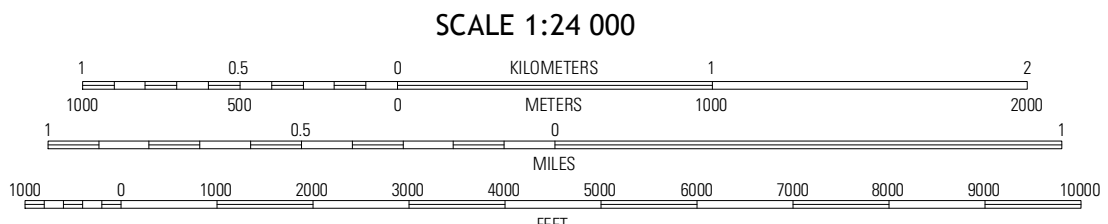
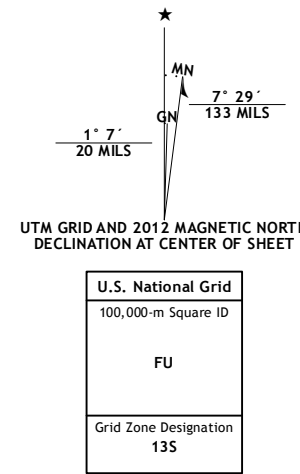


ROCK CAMP QUADRANGLE
TEXAS-NEW MEXICO
7.5-MINUTE SERIES



Produced by the United States Geological Survey
North American Datum of 1983 (NAD83)
World Geodetic System of 1984 (WGS84). Projection and
1,000-meter grid: Universal Transverse Mercator, Zone 13S
10,000-foot ticks: New Mexico Coordinate System of 1983 (east
zone), Texas Coordinate System of 1983 (north zone)

Imagery.....NAIP, May 2011
Roads.....©2006-2012 TomTom
Names.....GNSS, 2012
Hydrography.....National Hydrography Dataset, 2011
Contours.....National Elevation Dataset, 2002
Boundaries.....Census, BWC, B.C. USGS, 1972 - 2012
Public Land Survey System.....BLM, 2006 - 2008

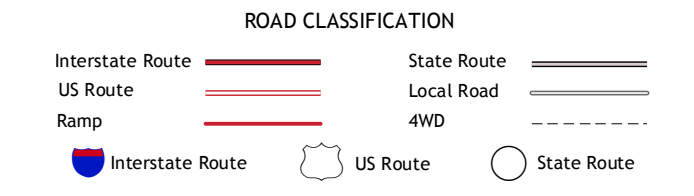


SCALE 1:24 000
CONTOUR INTERVAL 10 FEET
NORTH AMERICAN VERTICAL DATUM OF 1988
This map was produced to conform with the
National Geospatial Program US Topo Product Standards, 2011.
A metadata file associated with this product is draft version 0.6.7



QUADRANGLE LOCATION

Bard	Glenrio	Moser Ranch
Riley Camp	Rock Camp	Sand Point
Day Canyon	Endee Hill	Mustang Lake



ROCK CAMP, TX-NM
2012

ADJOINING 7.5 QUADRANGLES