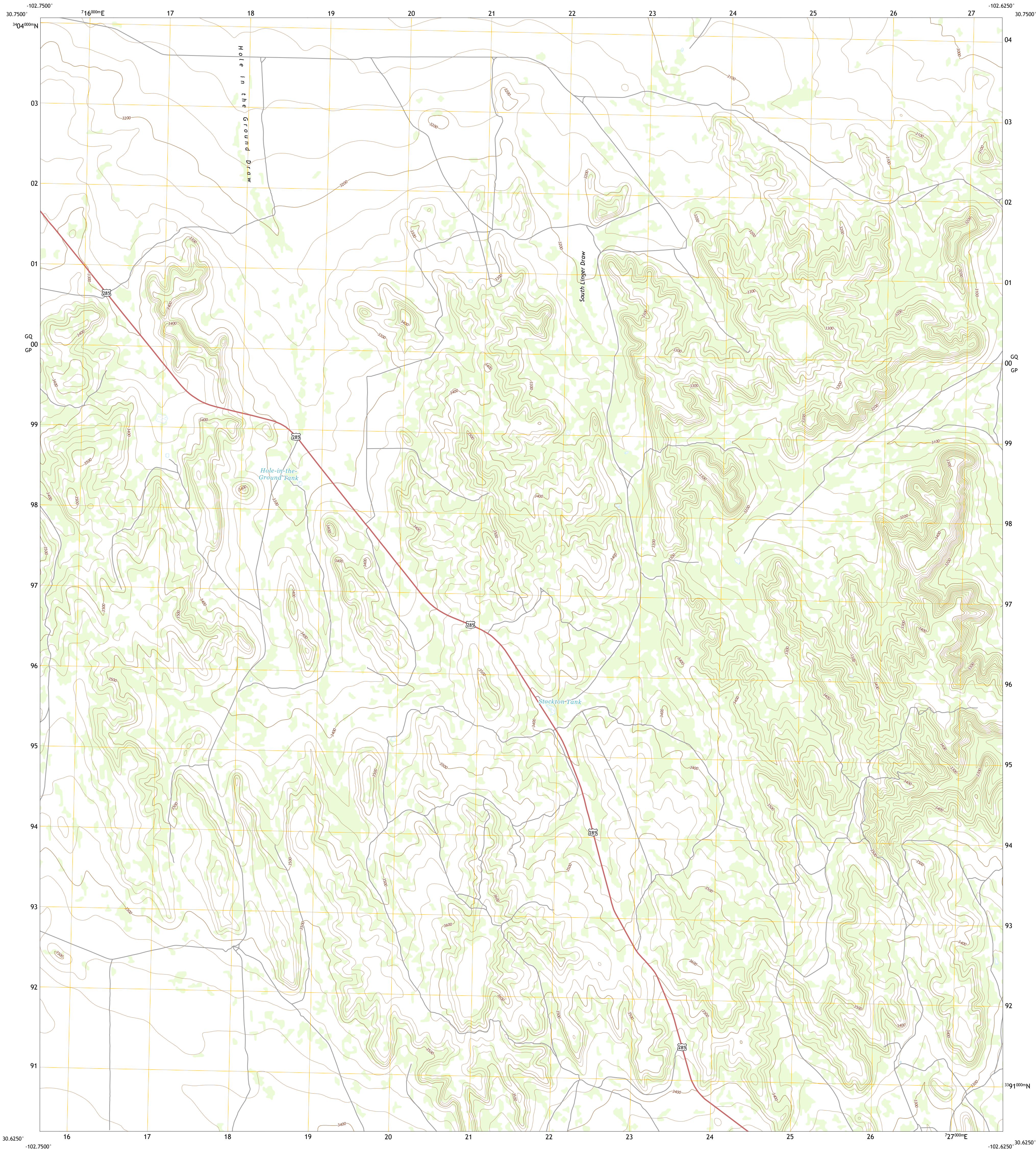




U.S. DEPARTMENT OF THE INTERIOR  
U.S. GEOLOGICAL SURVEY



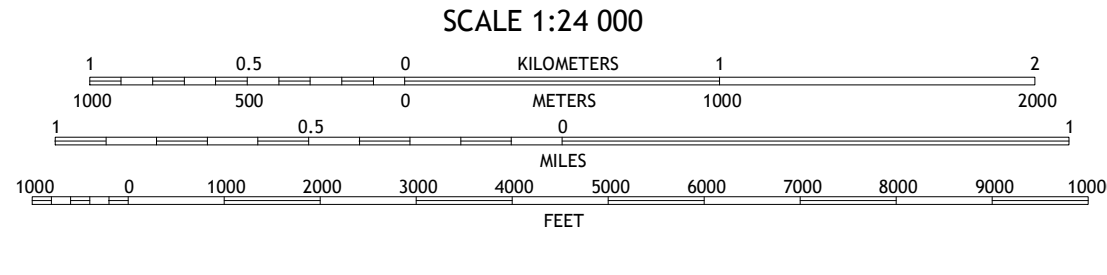
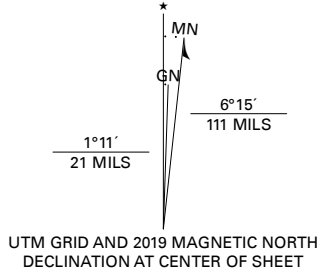
ROCK HOUSE DRAW NW QUADRANGLE  
TEXAS - PECOS COUNTY  
7.5-MINUTE SERIES



Produced by the United States Geological Survey

North American Datum of 1983 (NAD83)  
World Geodetic System of 1984 (WGS84) - Projection and  
1 000-meter grid/Universal Transverse Mercator, Zone 13R  
This map is not a legal document. Boundaries may be  
generalized for this map scale. Private lands within government  
reservations may not be shown. Obtain permission before  
entering private lands.

Imagery.....NAIP, October 2016 - November 2016  
Roads.....U.S. Census Bureau, 2015  
Names.....GNIS, 2015 - 2016  
Hydrography.....National Hydrography Dataset, 2002 - 2018  
Contours.....National Elevation Dataset, 2006  
Boundaries.....Multiple sources; see metadata file 2016 - 2017  
Wetlands.....FWS National Wetlands Inventory Not Available



1	2	3
4	5	6
7	8	9

ADJOINING QUADRANGLES

ROAD CLASSIFICATION	
Expressway	Local Connector
Secondary Hwy	Local Road
Ramp	4WD
Interstate Route	US Route
	State Route

ROCK HOUSE DRAW NW, TX  
2019

