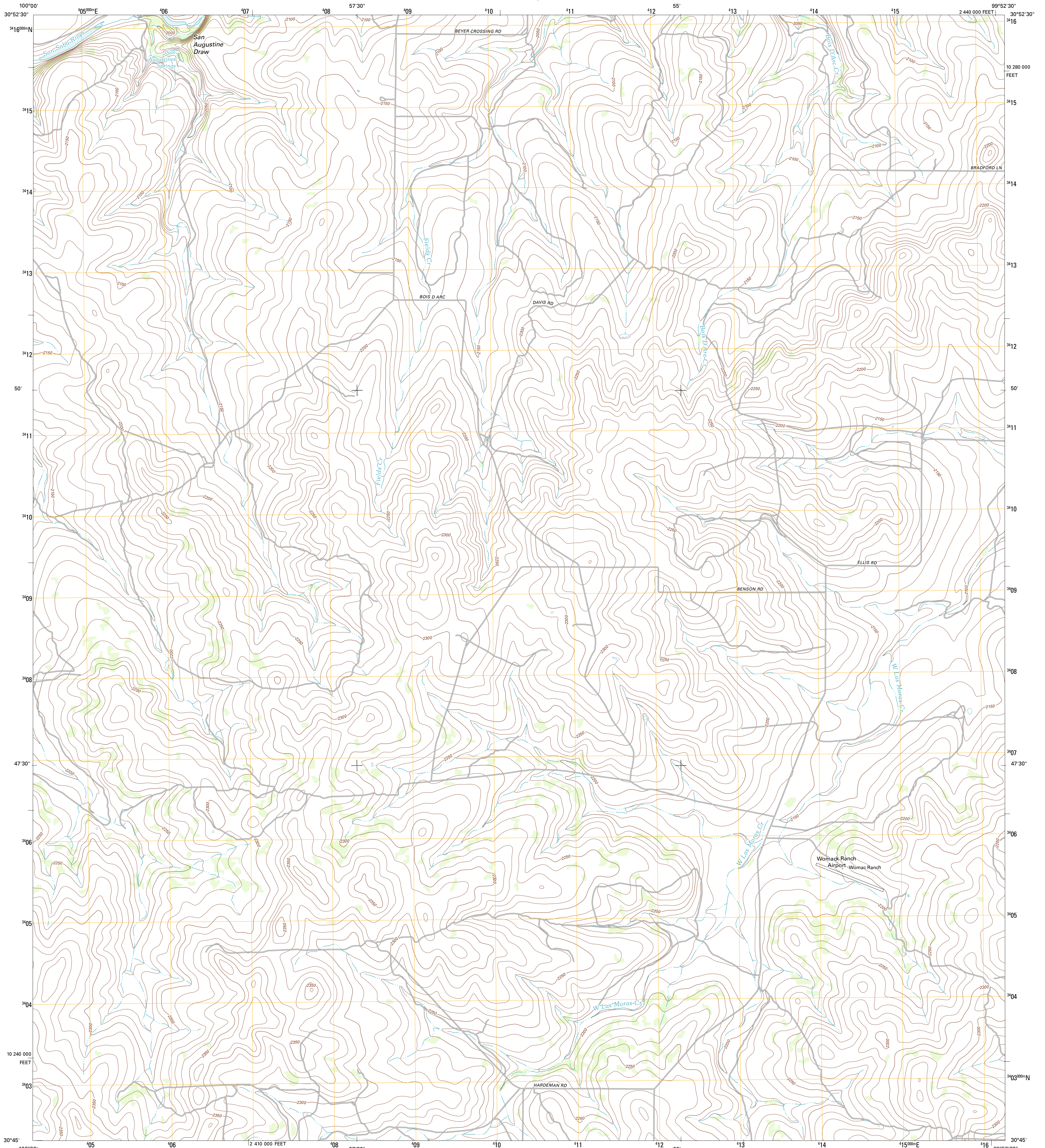




U.S. DEPARTMENT OF THE INTERIOR  
U. S. GEOLOGICAL SURVEY

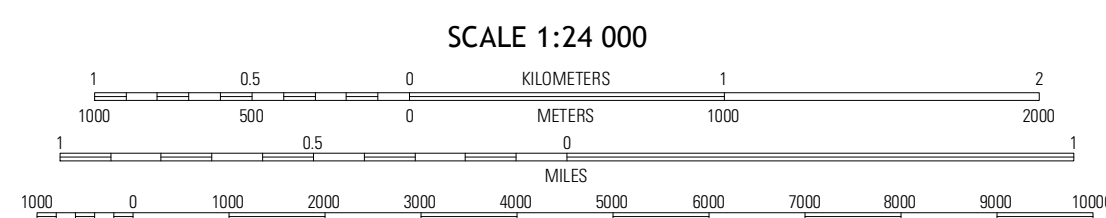
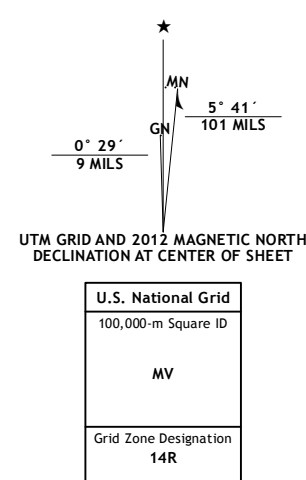


SAN AUGUSTINE DRAW QUADRANGLE  
TEXAS-MENARD CO.  
7.5-MINUTE SERIES



Produced by the United States Geological Survey  
North American Datum of 1983 (NAD83)  
World Geodetic System of 1984 (WGS84), Projection and  
1 000-meter grid: Universal Transverse Mercator, Zone 14R  
10 000-foot ticks: Texas Coordinate System of 1983 (central  
zone)

Imagery.....NAIP, May 2010 - August 2010  
Roads.....©2006-2012 TomTom  
Names.....©2006-2012 TomTom  
Hydrography.....National Hydrography Dataset, 2010  
Contours.....National Elevation Dataset, 2004  
Boundaries.....Census, IBWC, IBC, USGS, 1972 - 2012



CONTOUR INTERVAL 10 FEET  
NORTH AMERICAN VERTICAL DATUM OF 1988

This map was produced to conform with the  
National Geospatial Program US Topo Product Standard, 2011.  
A metadata file associated with this product is draft version 0.6.7



QUADRANGLE LOCATION

Fort McKavett NE	Clear Creek Lake	Menard
Fort McKavett	San Augustine Draw	Spoon Draw
McKegan Draw NE	Rust Ranch	Julio Draw

ADJOINING 7.5 QUADRANGLES

ROAD CLASSIFICATION

Interstate Route	State Route
US Route	Local Road
Ramp	4WD
Interstate Route	US Route
	State Route

SAN AUGUSTINE DRAW, TX  
2012