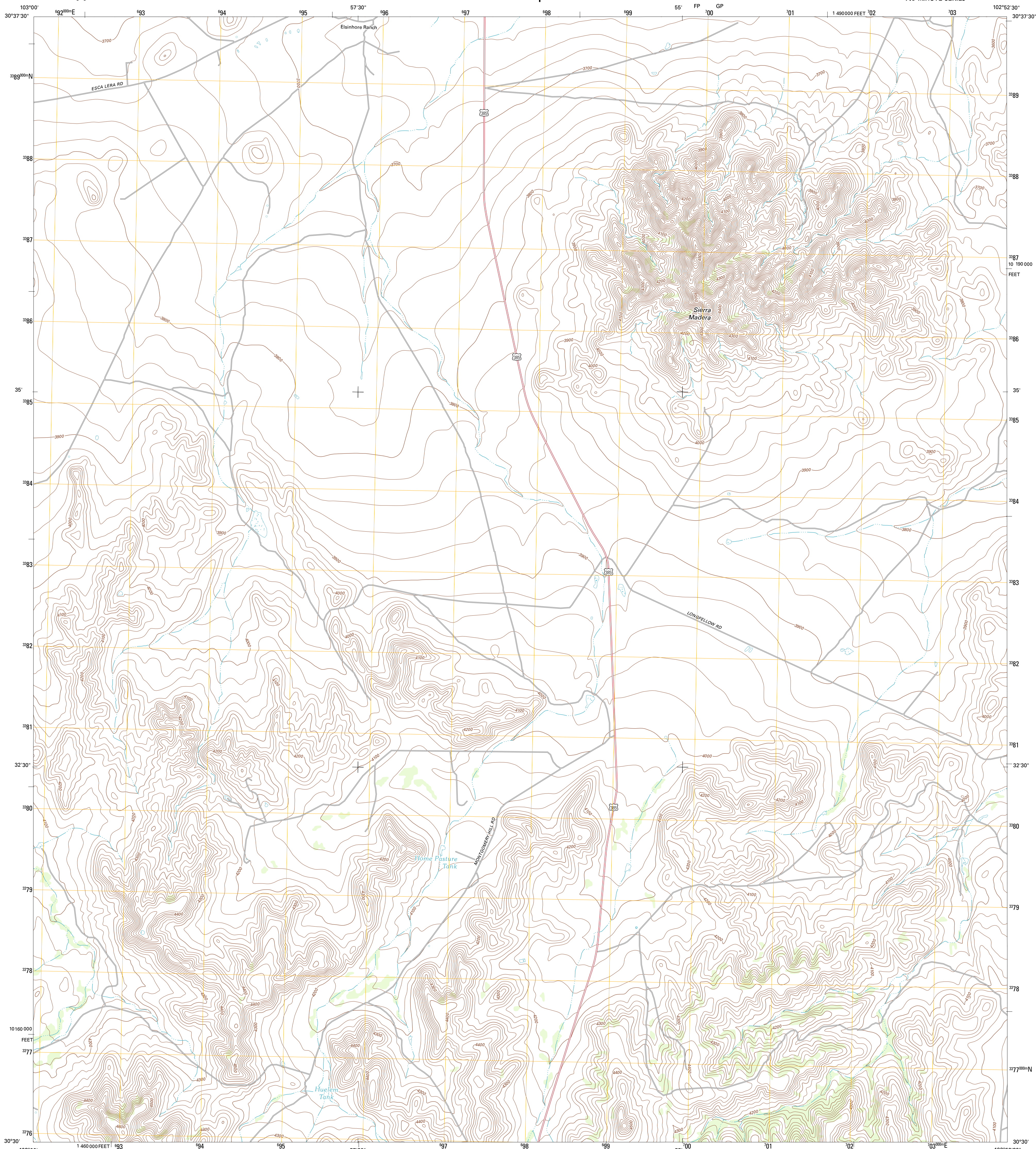




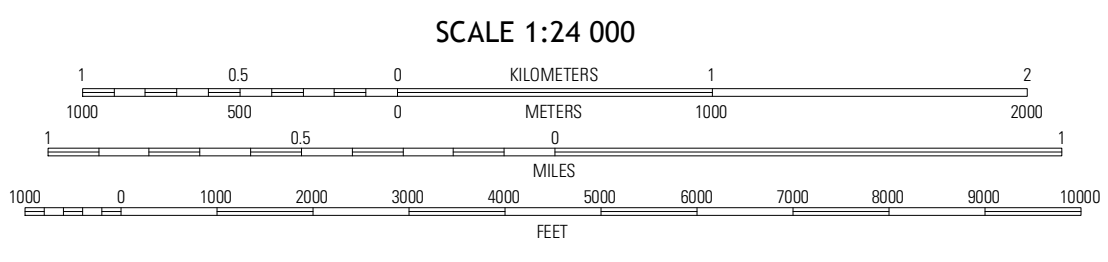
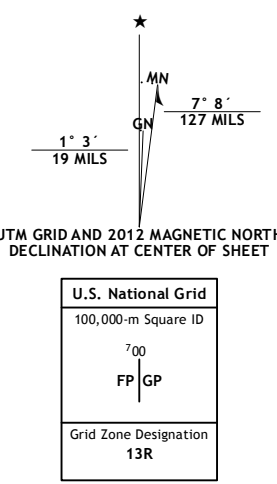
U.S. DEPARTMENT OF THE INTERIOR  
U. S. GEOLOGICAL SURVEY



SIERRA MADERA QUADRANGLE  
TEXAS-PECOS CO.  
7.5-MINUTE SERIES



Produced by the United States Geological Survey  
North American Datum of 1983 (NAD83)  
World Geodetic System of 1984 (WGS84). Projection and  
1 000-meter grid: Universal Transverse Mercator, Zone 13R  
10 000-foot ticks: Texas Coordinate System of 1983 (central  
zone)



CONTOUR INTERVAL 20 FEET  
NORTH AMERICAN VERTICAL DATUM OF 1988  
This map was produced to conform with the  
National Geospatial Program US Topo Product Standard, 2011.  
A metadata file associated with this product is draft version 0.6.7



QUADRANGLE LOCATION

Cave Mesa NE	Sierra Madera NW	Sierra Madera NE
Cave Mesa SE	Sierra Madera	Sierra Madera SE
Glass Mountain Ranch	Marathon Gap	Reininger Draw

ROAD CLASSIFICATION

Interstate Route	State Route
US Route	Local Road
Ramp	4WD

SIERRA MADERA, TX  
2012

ADJOINING 7.5 QUADRANGLES