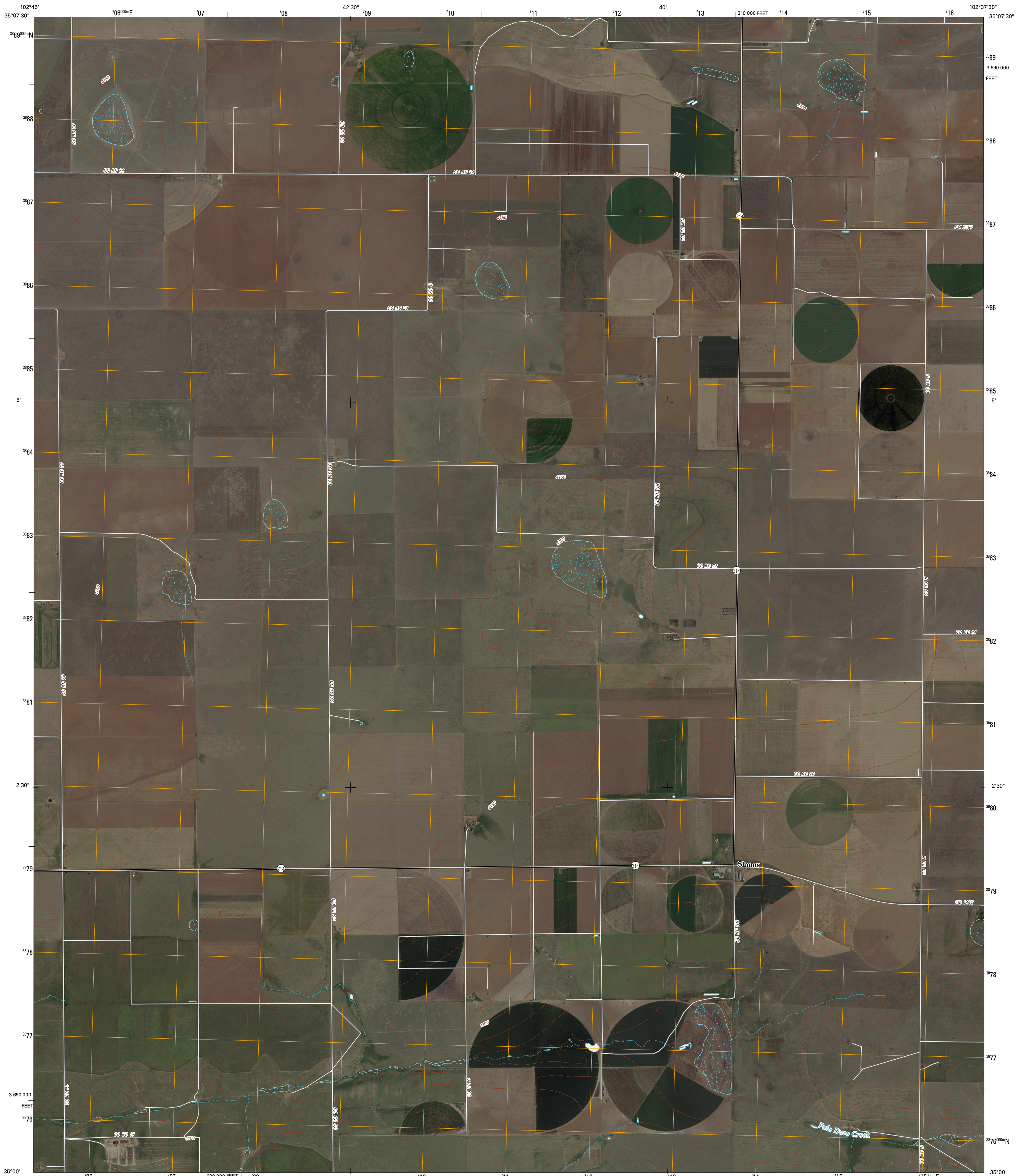




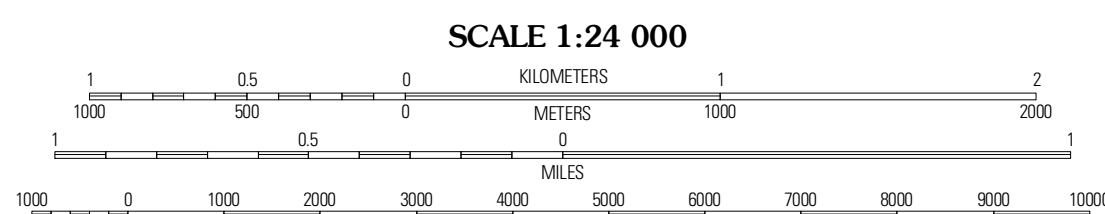
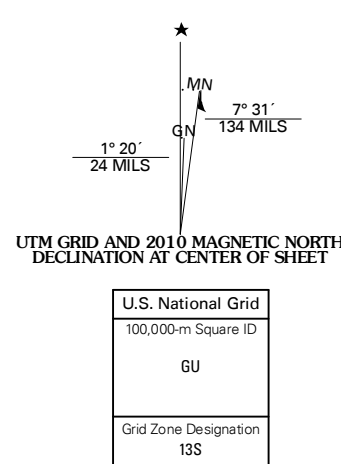
U.S. DEPARTMENT OF THE INTERIOR
U. S. GEOLOGICAL SURVEY



SIMMS QUADRANGLE
TEXAS
7.5-MINUTE SERIES



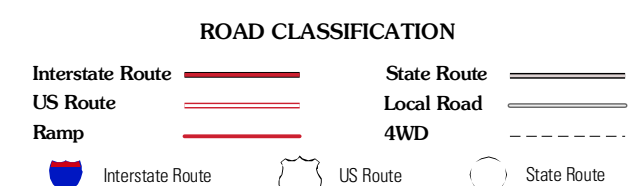
Produced by the United States Geological Survey
North American Datum of 1983 (NAD83)
US Census Bureau TIGER data with limited USGS updates, 2005
Names, 2008
Hydrography, National Hydrography Dataset, 1995
Contours, National Elevation Dataset, 2002



QUADRANGLE LOCATION

Boise	Simms NW	Simms NE
Norton Lake	Simms	Overstreet Lake
Wickott	Westway NW	Westway NE

ADJOINING 7.5' QUADRANGLES
TX 35102-212



This map was produced to conform with version 0.5.10 of the draft USGS Standards for 7.5-Minute Quadrangle Maps. A metadata file associated with this product is also draft version 0.5.10

SIMMS, TX
2010